

Northwest Amateur Radio Society - NARS

# Texas QSO Party

2016 Results – Rev 1

Prepared by:  
Chuck – NO5W  
Rev 0: April 17, 2017  
Rev 1: May 29, 2017

# Texas QSO Party – 2016

---

## Introduction

Here is a report on the results of the 2016 Texas QSO Party including individual scores in each category, Texas club aggregate scores, and analysis of the participation levels, and a summary of the county activity. Also included is a brief description of the log checking process along with some comments on frequently occurring logging errors for future reference. If you would like to request the files resulting from the log checking of your log please contact NO5W at his QRZ address. Thanks for your patience while waiting for these results to be compiled and posted. Unfortunately sometimes things like surgeries, hard drive crashes, and higher priority projects get in the way.

In the following tables Score\* is the score before applying any bonus whereas Final Score includes the bonus. The following two types of bonus points are available in the TQP.

- **Mobile County Activation Bonus** – Each county from which a mobile makes five or more contacts earns the mobile a bonus of 1000 points.
- **Mobile Tracking Bonus** – For any station, fixed or mobile, 500 bonus points are awarded for each group of five different counties that the station has a QSO with a given mobile.

## US-Canada (Non-Texas) Individual Player Scores

**Non-Texas Single Op CW Only Category** - The NTX-SO-CWO category continues to be a popular one with forty-nine entries making 3328 contacts in 2016 for an average of about 68 QSOs per entry. While there were more stations in this category in 2016 (49) vs 2015 (44) the total QSOs (3671) by the 2015 entries yielded an average of 83 QSOs per entry. This is indicative of a general significant decrease in participation and somewhat poorer band conditions in 2016. Here are the scores in this category. Top scoring entries in this category were definitely chasing the mobiles as their bonus points indicate. N6MU in particular is a master at tracking mobiles and has again come out on top, even though his signal is usually not one of the strongest on the band. His 18000 bonus points represent 36 different groups of five counties that he worked with mobiles.

Call	Category	CWQs	QsoPts	Mults	Score*	Bonus	Final Score
N6MU	NTX-SO-CWO	294	882	186	164052	18000	182052
VE3KZ	NTX-SO-CWO	268	804	165	132660	15000	147660
WB9CIF	NTX-SO-CWO	223	669	151	101019	14000	115019
K8QWY	NTX-SO-CWO	184	552	137	75624	11500	87124
K2ZR	NTX-SO-CWO	187	561	129	72369	11000	83369
WJ9B	NTX-SO-CWO	176	528	130	68640	10000	78640
KN4Y	NTX-SO-CWO	154	462	115	53130	8500	61630
NW0M	NTX-SO-CWO	140	420	94	39480	7500	46980
VE3KP	NTX-SO-CWO	127	381	99	37719	7000	44719
N2CQ	NTX-SO-CWO	105	315	84	26460	5000	31460
KE0TT	NTX-SO-CWO	113	339	78	26442	4000	30442
W7GF	NTX-SO-CWO	80	240	73	17520	4500	22020
W2RR	NTX-SO-CWO	96	288	64	18432	3500	21932

## Texas QSO Party – 2016

---

VA3ATT	NTX-SO-CWO	75	225	59	13275	2500	15775
K4ORD	NTX-SO-CWO	77	231	57	13167	2000	15167
W1END	NTX-SO-CWO	74	222	57	12654	2500	15154
K6KQV	NTX-SO-CWO	67	201	59	11859	3000	14859
KJ4IWZ	NTX-SO-CWO	72	216	48	10368	2000	12368
W2CVW	NTX-SO-CWO	64	192	49	9408	2000	11408
NY9P	NTX-SO-CWO	61	183	47	8601	1500	10101
K6AAB	NTX-SO-CWO	52	156	48	7488	2000	9488
KE8G	NTX-SO-CWO	52	156	46	7176	2000	9176
W0UY	NTX-SO-CWO	53	159	42	6678	2000	8678
K4BSK	NTX-SO-CWO	49	147	42	6174	1500	7674
K4GM	NTX-SO-CWO	41	123	37	4551	500	5051
KE4D	NTX-SO-CWO	35	105	29	3045	500	3545
W8CAG	NTX-SO-CWO	30	90	29	2610	500	3110
N0LY	NTX-SO-CWO	34	102	24	2448	0	2448
NN7A	NTX-SO-CWO	34	102	24	2448	0	2448
N2SO	NTX-SO-CWO	31	93	26	2418	0	2418
K9OZ	NTX-SO-CWO	26	78	24	1872	0	1872
W4ZPR	NTX-SO-CWO	28	84	20	1680	0	1680
WA4RCW	NTX-SO-CWO	27	81	20	1620	0	1620
K3TX	NTX-SO-CWO	18	54	18	972	500	1472
K7ZYV	NTX-SO-CWO	22	66	20	1320	0	1320
AD8J	NTX-SO-CWO	19	57	17	969	0	969
K6CSL	NTX-SO-CWO	18	54	17	918	0	918
W8JPF	NTX-SO-CWO	20	60	15	900	0	900
KF3G	NTX-SO-CWO	17	51	15	765	0	765
KI4MZC	NTX-SO-CWO	16	48	14	672	0	672
K7QG	NTX-SO-CWO	13	39	13	507	0	507
N0RET	NTX-SO-CWO	13	39	12	468	0	468
KI6OY	NTX-SO-CWO	11	33	11	363	0	363
N4NTO	NTX-SO-CWO	9	27	8	216	0	216
N4DLR	NTX-SO-CWO	8	24	7	168	0	168
W0JEK	NTX-SO-CWO	7	21	6	126	0	126
W4KKY	NTX-SO-CWO	4	12	3	36	0	36
AC2RJ	NTX-SO-CWO	2	6	2	12	0	12
VE6NS	NTX-SO-CWO	2	6	2	12	0	12

**Non-Texas Single Op Phone Only Category** - The NTX-SO-PHO category continues to be a popular one although in 2016 it suffered some in the participation area with only thirty-three entries vs the forty-three in 2015. Entries in this category made an average of twenty-five QSOs. The significantly lower number of bonus points earned by entries in this category is a reflection of the difficulty of mobile phone operation. There just is not as much opportunity for NTX-SO-PHO stations to work mobiles via phone as there is via CW. Here are the scores in this category.

## Texas QSO Party – 2016

---

Call	Category	PHQs	QsoPts	Mults	Score*	Bonus	Final Score
W6AFA	NTX-SO-PHO	269	538	115	61870	4500	66370
AC0CU	NTX-SO-PHO	52	104	47	4888	2000	6888
K5ZZR	NTX-SO-PHO	60	120	45	5400	500	5900
WA1SAY	NTX-SO-PHO	44	88	40	3520	1500	5020
WZ6ZZ	NTX-SO-PHO	35	70	33	2310	2000	4310
KW5RF	NTX-SO-PHO	45	90	37	3330	0	3330
VA3PDG	NTX-SO-PHO	28	56	22	1232	0	1232
N5MKY	NTX-SO-PHO	23	46	20	920	0	920
KM4HVE	NTX-SO-PHO	20	40	19	760	0	760
N0DOW	NTX-SO-PHO	19	38	19	722	0	722
K7DBN	NTX-SO-PHO	20	40	17	680	0	680
KD0JLE	NTX-SO-PHO	19	38	17	646	0	646
KE7GKI	NTX-SO-PHO	19	38	17	646	0	646
KD0HTS	NTX-SO-PHO	17	34	17	578	0	578
K9MIX	NTX-SO-PHO	17	32	16	512	0	560
VE2GT	NTX-SO-PHO	15	30	13	390	0	390
W6IA	NTX-SO-PHO	13	26	13	338	0	338
K4VBM	NTX-SO-PHO	13	26	12	312	0	312
W4WLF	NTX-SO-PHO	12	24	12	288	0	288
KJ4KKD	NTX-SO-PHO	10	20	10	200	0	200
NM5WB	NTX-SO-PHO	10	20	10	200	0	200
K1AUS	NTX-SO-PHO	9	18	9	162	0	162
AI4IC	NTX-SO-PHO	8	16	8	128	0	128
KE3ZT	NTX-SO-PHO	8	16	8	128	0	128
KC3ASH	NTX-SO-PHO	7	14	7	98	0	98
WJ4HCP	NTX-SO-PHO	6	12	6	72	0	72
N5WVR	NTX-SO-PHO	5	10	5	50	0	50
KK6VZE	NTX-SO-PHO	4	8	4	32	0	32
AB7WP	NTX-SO-PHO	3	6	3	18	0	18
K7JKM	NTX-SO-PHO	2	4	2	8	0	8
W8RMN	NTX-SO-PHO	2	4	2	8	0	8
KF4EKA	NTX-SO-PHO	1	2	1	2	0	2
W8KNO	NTX-SO-PHO	1	2	1	2	0	2

**Non-Texas Single Op Mixed Mode Category** - The NTX-SO-MIX category is one category that held its own in 2016 actually increasing in number of entries from twenty-eight to twenty-nine. Entries in this category made an average of sixty-five CW QSOs and thirty-eight Phone QSOs. Also notice that the ability to work CW mobiles resulted in an increase in bonus points over those of the Phone-Only category. In reviewing the following scores in the NTX-SO-MIX category note that a CW QSO is worth three points and a Phone QSO worth two points.

## Texas QSO Party – 2016

---

Call	Category	CWQs	PHQs	QsoPts	Mults	Score*	Bonus	Final Score
WA6KHK	NTX-SO-MIX	191	282	1137	186	211482	15000	226482
WB8WKQ	NTX-SO-MIX	163	164	817	142	116014	7500	123514
K4MM	NTX-SO-MIX	160	66	612	156	95472	12500	107972
N4PN	NTX-SO-MIX	127	130	641	124	79484	7500	86984
VE5SDH	NTX-SO-MIX	165	30	555	137	76035	10500	86535
VE7CV	NTX-SO-MIX	144	38	508	144	73152	10000	83152
K4BAI	NTX-SO-MIX	116	30	408	95	38760	4500	43260
N3RJ	NTX-SO-MIX	102	43	392	94	36848	5000	41848
AH6AX	NTX-SO-MIX	85	18	291	72	20952	3500	24452
K9GDF	NTX-SO-MIX	86	5	268	70	18760	3000	21760
K4AMA	NTX-SO-MIX	68	9	222	62	13764	3000	16764
WB9HFK	NTX-SO-MIX	69	16	239	54	12906	2000	14906
NU1O	NTX-SO-MIX	48	39	222	54	11988	1500	13488
N8II	NTX-SO-MIX	39	42	201	60	12060	500	12560
KA7T	NTX-SO-MIX	53	21	201	56	11256	1000	12256
NS8O	NTX-SO-MIX	53	18	195	50	9750	1000	10750
K4RUM	NTX-SO-MIX	50	4	158	45	7110	1500	8610
VE3AYR	NTX-SO-MIX	41	9	141	41	5781	500	6281
W0BR	NTX-SO-MIX	18	40	134	42	5628	500	6128
KA5VZG	NTX-SO-MIX	21	23	109	39	4251	500	4751
W2UDT	NTX-SO-MIX	17	9	69	22	1518	0	1518
K0DEQ	NTX-SO-MIX	17	7	65	23	1495	0	1495
K0HNC	NTX-SO-MIX	21	3	69	21	1449	0	1449
W2ARP	NTX-SO-MIX	7	17	55	24	1320	0	1320
K2HT	NTX-SO-MIX	14	2	46	14	644	0	644
N2BEG	NTX-SO-MIX	10	6	42	15	630	0	630
AA0A	NTX-SO-MIX	0	19	38	16	608	0	608
K4MZE	NTX-SO-MIX	4	2	16	6	96	0	96
AB6CC	NTX-SO-MIX	0	4	8	4	32	0	32

**Non-Texas Single Op QRP Category** - The NTX-SO-QRP category is tough in times of good conditions and in the conditions that we experienced in 2016 operating in this category required dedication on the part of the QRP operator and excellent ears on the part of the receiving station. This year, probably due largely to the poor conditions this category was very slim with only two entries as compared to twelve entries in 2015. The bonus earned by K3TW indicates that he was quite successful in tracking down the mobiles as they changed counties. Here are the scores for this category. Please note that a frequent player and high scorer in this category, Jerry Fiore-N4JF, has become a silent key. RIP OM.

Call	Category	CWQs	PHQs	QSOPts	Mults	Score*	Bonus	Final Score
K3TW	NTX-SO-QRP	180	60	660	139	91740	10500	102240
W4VG	NTX-SO-QRP	11	0	33	9	297	0	297

## Texas QSO Party – 2016

---

**DX Single Op Category** – Again, most likely due to the poor conditions, this category had a significant decrease in participation going from 17 participants in 2015 to only 6 in 2016. Several of the top scoring stations from 2015 (SP9LJD, DK2OY, DL6KVA) were back again but with a little shuffling at the top with DK2OY taking over the top spot followed by SP9LJD and DL6KVA. As one might expect the majority of the QSOs by the DX Single Op group were made on CW (94%) vs Phone (6%). The top two entries did a good job of tracking the mobiles as indicated by their bonus points. DK2OY upped his game significantly from the previous year increasing his mults (counties) from 69 to 105, an increase of over 50%.

Call	Category	CWQs	PHQs	QsoPts	Mults	Score*	Bonus	Final Score
DK2OY	DX-SO	121	12	387	105	40635	7000	47635
SP9LJD	DX-SO	98	7	308	78	24024	5500	29524
DL6KVA	DX-SO	40	0	120	33	3960	500	4460
PA3ARM	DX-SO	30	0	90	30	2700	1000	3700
DL3DXX	DX-SO	30	0	90	26	2340	1000	3340
SM1TDE	DX-SO	4	0	12	4	48	0	48

### Texas Individual Player Scores

**Texas Single Op CW Only Category** – In 2016 the TX-SO-CWO category managed to attract logs from 25 entrants, a reduction of about 33% from the 37 TX-SO-CWO logs received in 2015. John-AC4CA captured the top spot even though his competition in the form of Clint-AE5GT was more successful in tracking down multipliers (146 vs 129) and received more bonus points (6500 vs 2000) for working the mobiles. If John had taken a nap while Clint continued working and obtained 60 more QSOs we would have had a tie in this category. In the end the larger number of QSOs made by palindromic AC4CA was too difficult to overcome. The average score for this group was 48758 which would have placed the average scorer in 10<sup>th</sup> place indicating a slight skew toward the top. Here are the scores for this category.

Call	Category	CWQs	QsoPts	Mults	Score*	Bonus	Final Score
AC4CA	TX-SO-CWO	499	1497	129	193113	2000	195113
AE5GT	TX-SO-CWO	369	1107	146	161622	6500	168122
K5AX	TX-SO-CWO	276	828	109	90252	1500	91752
N5RZ	TX-SO-CWO	259	777	114	88578	2000	90578
WA8ZBT	TX-SO-CWO	259	777	109	84693	1500	86193
K5XR	TX-SO-CWO	293	879	83	72957	0	72957
W0VX	TX-SO-CWO	215	645	107	69015	3500	72515
K0NM	TX-SO-CWO	246	738	89	65682	2000	67682
K5TIA	TX-SO-CWO	154	462	82	37884	500	38384
N5QQ	TX-SO-CWO	191	573	66	37818	0	37818
KT5V	TX-SO-CWO	151	453	74	33522	0	33522
N5PHT	TX-SO-CWO	175	525	60	31500	0	31500
W5YDM	TX-SO-CWO	145	435	63	27405	0	27405
W8FN	TX-SO-CWO	152	456	54	24624	0	24624
K5IX	TX-SO-CWO	100	300	70	21000	1000	22000

## Texas QSO Party – 2016

---

K5YQF	TX-SO-CWO	111	333	61	20313	1000	21313
WC5D	TX-SO-CWO	82	246	72	17712	3000	20712
W5LXS	TX-SO-CWO	102	306	60	18360	0	18360
K5MUG	TX-SO-CWO	72	216	69	14904	3000	17904
AJ4F	TX-SO-CWO	111	333	46	15318	0	15318
N5AW	TX-SO-CWO	107	321	44	14124	0	14124
NM5M	TX-SO-CWO	55	165	31	5115	0	5115
K5SBR	TX-SO-CWO	21	63	12	756	0	756
N5ZN	TX-SO-CWO	16	48	15	720	0	720

**Texas Single Op Phone Only Category** – In 2016 the TX-SO-PHO category managed to attract logs from 32 entrants, a reduction of about 40% from the 53 TX-SO-PHO logs received in 2015. Gene-K5LLA ran away with the QSO rate building enough QSO buffer in the score to compensate for the fact that his mult and bonus points were lower than those of John-K5IZO. In the race for second place between John-K5IZO and Leslie-AD5WB, K5IZO's higher mults and mobile bonus points helped him hold down the second place spot. Leslie was close on John's heels needing only 28 more QSOs without working any more mults or obtaining mobile bonus points to lock in second place with a tie.

Call	Category	PHQs	QsoPts	Mults	Score*	Bonus	Final Score
K5LLA	TX-SO-PHO	1232	2464	120	295680	0	295680
K5IZO	TX-SO-PHO	354	708	131	92748	2000	94748
AD5WB	TX-SO-PHO	498	996	90	89640	0	89640
W8CM	TX-SO-PHO	368	736	103	75808	0	75808
WM5Q	TX-SO-PHO	267	534	104	55536	500	56036
NA5DV	TX-SO-PHO	216	432	104	44928	0	44928
N5KWD	TX-SO-PHO	267	534	67	35778	0	35778
W5NAC	TX-SO-PHO	219	438	73	31974	1500	33474
N5DUX	TX-SO-PHO	147	294	94	27636	500	28136
WB8LBZ	TX-SO-PHO	147	294	87	25578	2000	27578
N5VPC	TX-SO-PHO	84	168	61	10248	500	10748
W5JNP	TX-SO-PHO	117	234	45	10530	0	10530
KE5RON	TX-SO-PHO	76	152	56	8512	0	8512
N5AYB	TX-SO-PHO	63	126	53	6678	1000	7678
KF5DDV	TX-SO-PHO	46	92	41	3772	1000	4772
N5DTT	TX-SO-PHO	46	92	42	3864	0	3864
KB6OJE	TX-SO-PHO	42	84	37	3108	0	3108
K5LGX	TX-SO-PHO	52	104	26	2704	0	2704
K5AVY	TX-SO-PHO	35	70	31	2170	500	2670
KC5KBN	TX-SO-PHO	47	94	27	2538	0	2538
N5VYS	TX-SO-PHO	29	58	25	1450	0	1450
KF5RLL	TX-SO-PHO	22	44	18	792	500	1292
N5ZKK	TX-SO-PHO	30	60	20	1200	0	1200
AB5XZ	TX-SO-PHO	25	50	22	1100	0	1100
KN6Q	TX-SO-PHO	23	46	18	828	0	828
KF5VLK	TX-SO-PHO	24	48	16	768	0	768

## Texas QSO Party – 2016

---

K5UTA	TX-SO-PHO	20	40	18	720	0	720
WC5C	TX-SO-PHO	20	40	17	680	0	680
N5BIA	TX-SO-PHO	10	20	10	200	0	200
KF5NRS	TX-SO-PHO	5	10	5	50	0	50
WZ5TM	TX-SO-PHO	5	10	5	50	0	50
K5KMS	TX-SO-PHO	3	6	3	18	0	18

**Texas Single Op Mixed Mode Category** – In 2016 the TX-SO-MIX category managed to attract logs from 10 entrants, a very significant reduction of 50% from the 20 TX-SO-MIX logs received in 2015. Here are the scores for the TX-SO-MIX category. Dave-N5DO had a lock on the first place spot in this category.

Call	Category	CWQs	PHQs	QsoPts	Mults	Score*	Bonus	Final Score
N5DO	TX-SO-MIX	254	110	982	156	153192	4500	157692
W5VX	TX-SO-MIX	78	148	530	85	45050	0	45050
K0YY	TX-SO-MIX	36	141	390	96	37440	1000	38440
K8LS	TX-SO-MIX	133	13	425	74	31450	500	31950
W5QLF	TX-SO-MIX	104	13	338	57	19266	0	19266
W5TV	TX-SO-MIX	8	49	122	46	5612	500	6112
AC5AA	TX-SO-MIX	13	5	49	17	833	0	833
W5RH	TX-SO-MIX	3	17	43	18	774	0	774
KG5LVT	TX-SO-MIX	1	15	33	14	462	0	462

**Texas Single Op QRP Category** –Even with the poor conditions in 2016 the TX-SO-QRP category held its own with two operators venturing out whereas in 2015 there were three. QRP regular Cranz-WB5BKL continued to hold the top spot with an all CW effort and managed to obtain a nice bonus of 2500 for working mobiles in 5 different counties 5 times with his K3/10 @ 5W feeding various wires strung in the Burnet brush.

Call	Category	CWQs	PHQs	QsoPts	Mults	Score*	Bonus	Final Score
WB5BKL	TX-SO-QRP	159	0	477	88	41976	2500	44476
N1CC	TX-SO-QRP	139	62	541	75	40575	0	40575
KN5L	TX-SO-QRP	80	20	280	62	17360	0	17360

**Texas Mobile Single Op CW Only Category** –The TXM-SO-CWO category held its own this year with the same number of log entries as in 2015. The top two entries, Alan-N5NA and Guff-KS5A, were repeat entries from 2015. Thanks to both N5NA and KS5A for their continued support of the TQP with their mobile operations. KS5A is one of the TQP out-of-state entries coming over from Arizona to help out for the past several years and Alan, a regular on the QSO Party circuit, has been going mobile and coming out on top of the TXM-SO-CWO category for as long as I can remember.

Call	Category	CWQs	QsoPts	Mults	Score*	Bonus	Final Score
N5NA	TXM-SO-CWO	1173	3519	101	355419	29500	384919
KS5A	TXM-SO-CWO	806	2418	82	198276	20000	218276
N3BB	TXM-SO-CWO	39	117	31	3627	2000	5627



## Texas QSO Party – 2016

---

**Texas Mobile Single Op Phone Only Category** –The TXM-SO-PHO category was one of the few categories where the number of entries actually increased going from nine in 2015 to 12 in 2016. It's good to see the SSB ops mounting a good contingent of mobiles. And from the looks of those bonus points made by many of the entries they covered a fair amount of territory, with the champion in counties covered being Victor-WB0TEV who activated 40 counties while cutting a swath from the far northeastern part of the state to south of Austin.

Call	Category	PHQs	QsoPts	Mults	Score*	Bonus	Final Score
WB0TEV	TXM-SO-PHO	418	836	80	66880	40500	107380
NM5G	TXM-SO-PHO	260	520	48	24960	23000	47960
W1JCW	TXM-SO-PHO	264	528	80	42240	4000	46240
KI5MM	TXM-SO-PHO	155	310	62	19220	13000	32220
K5SVV	TXM-SO-PHO	189	378	58	21924	9000	30924
WA5DSS	TXM-SO-PHO	90	180	56	10080	8500	18580
KJ5MA	TXM-SO-PHO	58	116	35	4060	5000	9060
N5BAA	TXM-SO-PHO	36	72	23	1656	3000	4656
N5PHI	TXM-SO-PHO	32	64	21	1344	3000	4344
WA5DCT	TXM-SO-PHO	25	50	19	950	1000	1950
KK5LO	TXM-SO-PHO	9	18	8	144	0	144
K5MRA	TXM-SO-PHO	6	12	3	36	0	36

**Texas Mobile Single Op Mixed Mode Category** –Since the inception of the TXM-SO-PHO category several years ago those operators that previously entered the TXM-SO-MIX category have almost all migrated to the TXM-SO-PHO category leaving the mixed mode category very slim. This year the category managed to attract only one entry in long time TQP supporter Bob-W0BH who comes down each year from near Wichita, KS to run the pileups from the Texas Panhandle causing quite a stir among the TQP followers on both modes. As the following stats indicate Bob had a very balanced operation in terms of modes with an even distribution between CW and SSB. Many thanks to Bob for making the trip to the panhandle each year.

Call	Category	CWQs	PHQs	QsoPts	Mults	Score*	Bonus	Final Score
W0BH	TXM-SO-MIX	743	617	3463	106	367078	28500	395578

**Texas Mobile Multi-Op Category** –The TXM-MO category provides an opportunity for two (or more) operators to get together to share the driving and operating usually allowing broader coverage than is possible with a single op plus driver. In 2016 this category had three entries with the team of Jerry-K5YAA and Jason-N5NU winning the top spot. Jerry is another out of state op who has been a regular supporter of the TQP coming down to the party from near Tulsa, OK for several years and who is a regular on the QSO party circuit having operated mobile in many events including KS, MO, FL, TX, OK, 7QP, GA and probably several others that I don't know about. That experience, along with the fact that he trailers a generator to support his 500w amp, make his operation tough competition. This year he teamed up with Jason who lives in Nacogdoches when not serving as a missionary in Chile. Congratulations and thanks to both of these ops for taking time out to run mobile in the TQP.

Call	Category	CWQs	PHQs	QsoPts	Mults	Score*	Bonus	Final Score
------	----------	------	------	--------	-------	--------	-------	-------------

## Texas QSO Party – 2016

K5YAA	TXM-MO	1464	126	4644	109	506196	42000	548196
W5CT	TXM-MO	1194	303	4188	104	435552	35000	470552
NO5W	TXM-MO	1100	1	3302	87	287274	41000	328274
W5WRL	TXM-MO	0	448	896	105	94080	14000	108080

Operators: **K5YAA**: N5NU, K5YAA; **W5CT**: W5MJ, K5PI, W5UP, W9MC; **NO5W**: K5OT, NO5W;  
**W5WRL**: KF5PEL, WB5PYT, W5WRL

**Texas Multi-Op Category** –The TX-MO category provides an opportunity for two (or more) operators to get together to share the TQP experience in a flexible schedule for those who might not be able to devote the entire weekend to the party. This year there were eight entries in this category as compared to 14 in 2015. It featured a close race for the top spot between the groups Naturist ARC (NU5DE) and the Heart of Texas DX Society (W5DXS) with NU5DE focused on SSB and W5DXS as a mixed mode entry but predominantly CW. The NU5DE group appears to have focused on rate, letting the mults fall where they may and not searching for bonus points (probably due to the lack of bonus points on SSB) and still managed to come out ahead but by a very slim margin of .5%.

Call	Category	CWQs	PHQs	QsoPts	Mults	Score*	Bonus	Final Score
NU5DE	TX-MO	0	741	1482	106	157092	0	157092
W5DXS	TX-MO	269	72	951	158	150258	6000	156258
KN5TX	TX-MO	236	193	1094	124	135656	0	135656
W5RTA	TX-MO	224	49	770	104	80080	0	80080
W5SH	TX-MO	9	120	267	57	15219	0	15219
WD5DDH	TX-MO	0	114	228	63	14364	0	14364
W5SFA	TX-MO	9	116	259	47	12173	0	12173
W5BCS	TX-MO	42	12	150	41	6150	500	6650
K5LRK	TX-MO	0	35	70	29	2030	0	2030

Operators: **NU5DE**: N5KF, NI5B, N5NXS; **W5DXS**: K5LH, KC5BFM, KC5LDO; **KN5TX**: KN5TX, WA5FWC, W8FN; **W5RTA**: W5MRM, KD3VK, K0BCN, KI5SC; **W5SH**: AF5YP, KF5FEI, KF5RHI, KC5SLQ, KE5IRC, KF5RRF, KF5LKG; **WD5DDH**: KD5NFW, KF5IVJ, WA5DM, KO5RP, WA5DM, AD5JC; **W5SFA**: KA8WEP, KG5WPH, K1PEC, K5FRT, K5LLR, N5RWK, WA5IWB, WB5RFQ; **W5BCS**: KF5YY, KG5JDJ, W5MHN, KF5WGJ, N5ZKF, KA5HIA, N5GQB; **K5LRK**: AF5VO, KC5LL, K5LOL;

# Texas QSO Party – 2016

---

## Texas Club Aggregate Results

Each Texas operator submitting a log can indicate which club their score should be contributed to and for each club these scores are summed to create the club's aggregate score. In 2016 there were 26 clubs represented by 68 of the 95 Texas logs submitted. The winner of the club competition receives a traveling trophy as well as a permanent plaque. Here are the summary results showing number of participants and total score. The summary is followed by the details used to compile it.

<b>Club</b>	<b>Entries</b>	<b>Score</b>
Central Texas DX & Contest Club	10	1349900
DFW Contest Group	11	655064
Midland ARC	4	601937
Texas DX Society	4	176504
Big Bend ARC	1	157692
Heart of Texas DX Society	1	156258
South Texas DX & Contest Club	8	128944
Brazos Valley ARC	2	95522
Ellis County ARC	3	77508
McKinney ARC	2	75844
Northwest ARS	3	50830
Battleship Texas ARC	1	44928
North Texas Contest Club	1	40575
Nacogdoches ARC	2	39586
Texas Emergency Amateur Communications	1	35778
Sun City ARC	2	28346
Kilocycle Club of Ft. Worth	1	15219
Stephen F Austin Radio Club	1	12173
Parker County ARC	1	9060
Bryan ARC	1	6650
Port Lavaca ARC	2	5528
Southwest Dallas County ARC	1	3108
Lake Area Amateur Radio Klub	1	2030
DCT ARC	1	1950
Tri-County ARC	2	1508
Maverick Radio Mentors	1	720

# Texas QSO Party – 2016

---

## Texas Club Detailed Results

Here are the detailed scores used to compile the Texas Club Aggregate Summary. If your score is contributed to the wrong club please let NO5W know and a review of the log and possible correction will be made.

<b>Call</b>	<b>Category</b>	<b>Club</b>	<b>Final Score</b>
W5CT	TXM-MO	Central Texas DX & Contest Club	470552
NO5W	TXM-MO	Central Texas DX & Contest Club	328274
K5LLA	TX-SO-PHO	Central Texas DX & Contest Club	295680
NU5DE	TX-MO	Central Texas DX & Contest Club	157092
WB5BKL	TX-SO-CWO	Central Texas DX & Contest Club	44476
K8LS	TX-SO-MIX	Central Texas DX & Contest Club	31950
N5AW	TX-SO-CWO	Central Texas DX & Contest Club	14124
N3BB	TXM-SO-CWO	Central Texas DX & Contest Club	5627
KF5RLL	TX-SO-PHO	Central Texas DX & Contest Club	1292
AC5AA	TX-SO-MIX	Central Texas DX & Contest Club	833
<b>Club Total</b>			<b>1349900</b>
KN5TX	TX-MO	DFW Contest Group	135656
WB0TEV	TXM-SO-PHO	DFW Contest Group	107380
WA8ZBT	TX-SO-CWO	DFW Contest Group	86193
K5XR	TX-SO-CWO	DFW Contest Group	72957
W0VX	TX-SO-CWO	DFW Contest Group	72515
WM5Q	TX-SO-PHO	DFW Contest Group	56036
W1JCW	TXM-SO-PHO	DFW Contest Group	46240
N5QQ	TX-SO-CWO	DFW Contest Group	37818
W8FN	TX-SO-CWO	DFW Contest Group	24624
W5JNP	TX-SO-PHO	DFW Contest Group	10530
NM5M	TX-SO-CWO	DFW Contest Group	5115
<b>Club Total</b>			<b>655064</b>
N5NA	TXM-SO-CWO	Midland ARC	384919
W5WRL	TXM-SO-PHO	Midland ARC	108080
N5RZ	TX-SO-CWO	Midland ARC	90578
W5LXS	TX-SO-CWO	Midland ARC	18360
<b>Club Total</b>			<b>601937</b>
AD5WB	TX-SO-PHO	Texas DX Society	89640
K0NM	TX-SO-CWO	Texas DX Society	67682
AJ4F	TX-SO-CWO	Texas DX Society	15318
N5DTT	TX-SO-PHO	Texas DX Society	3864
<b>Club Total</b>			<b>176504</b>

## Texas QSO Party – 2016

---

N5DO	TX-SO-MIX	Big Bend ARC	157692
		<b>Club Total</b>	<b>157692</b>
W5DXS	TX-MO	Heart of Texas DX Society	156258
		<b>Club Total</b>	<b>156258</b>
W5RTA	TX-MO	South Texas DX & Contest Club	80080
W5QLF	TX-SO-MIX	South Texas DX & Contest Club	19266
K5MUG	TX-SO-CWO	South Texas DX & Contest Club	17904
N5BAA	TXM-SO-PHO	South Texas DX & Contest Club	4656
N5PHI	TXM-SO-PHO	South Texas DX & Contest Club	4344
N5VYS	TX-SO-PHO	South Texas DX & Contest Club	1450
AB5XZ	TX-SO-PHO	South Texas DX & Contest Club	1100
KK5LO	TXM-SO-PHO	South Texas DX & Contest Club	144
		<b>Club Total</b>	<b>128944</b>
K5IZO	TX-SO-PHO	Brazos Valley ARC	94748
W5RH	TX-SO-MIX	Brazos Valley ARC	774
		<b>Club Total</b>	<b>95522</b>
K15MM	TXM-SO-PHO	Ellis County ARC	32220
K5SVV	TXM-SO-PHO	Ellis County ARC	30924
WD5DDH	TX-MO	Ellis County ARC	14364
		<b>Club Total</b>	<b>77508</b>
W8CM	TX-SO-PHO	McKinney ARC	75808
K5MRA	TXM-SO-PHO	McKinney ARC	36
		<b>Club Total</b>	<b>75844</b>
NM5G	TXM-SO-PHO	Northwest ARS	47960
K5AVY	TX-SO-PHO	Northwest ARS	2670
N5BIA	TX-SO-PHO	Northwest ARS	200
		<b>Club Total</b>	<b>50830</b>
NA5DV	TX-SO-PHO	Battleship Texas ARC	44928
		<b>Club Total</b>	<b>44928</b>
N1CC	TX-SO-QRP	North Texas Contest Club	40575
		<b>Club Total</b>	<b>40575</b>
W5NAC	TX-SO-PHO	Nacogdoches ARC	33474
W5TV	TX-SO-MIX	Nacogdoches ARC	6112
		<b>Club Total</b>	<b>39586</b>

## Texas QSO Party – 2016

---

N5KWD	TX-SO-PHO	Texas Emergency Amateur Communications	35778
		<b>Club Total</b>	<b>35778</b>
WB8LBZ	TX-SO-PHO	Sun City ARC	27578
KF5VLK	TX-SO-PHO	Sun City ARC	768
		<b>Club Total</b>	<b>28346</b>
W5SH	TX-MO	Kilocycle Club of Ft. Worth	15219
		<b>Club Total</b>	<b>15219</b>
W5SFA	TX-MO	Stephen F Austin Radio Club	12173
		<b>Club Total</b>	<b>12173</b>
KJ5MA	TXM-SO-PHO	Parker County ARC	9060
		<b>Club Total</b>	<b>9060</b>
W5BCS	TX-MO	Bryan ARC	6650
		<b>Club Total</b>	<b>6650</b>
KF5DDV	TX-SO-PHO	Port Lavaca ARC	4772
K5SBR	TX-SO-CWO	Port Lavaca ARC	756
		<b>Club Total</b>	<b>5528</b>
KB6OJE	TX-SO-PHO	Southwest Dallas County ARC	3108
		<b>Club Total</b>	<b>3108</b>
K5LRK	TX-MO	Lake Area Amateur Radio Klub	2030
		<b>Club Total</b>	<b>2030</b>
KN6Q	TX-SO-PHO	Tri-County ARC	828
WC5C	TX-SO-PHO	Tri-County ARC	680
		<b>Club Total</b>	<b>1508</b>
K5UTA	TX-SO-PHO	Maverick Radio Mentors	720
		<b>Club Total</b>	<b>720</b>

# Texas QSO Party – 2016

---

**Some Statistics from the TQP Logs** – It’s good to capture some statistics from the submitted logs in order to assess how the QSO party is going – up/down/sideways. Here are some statistics from the 2016 TQP including information on the level of participation, county activity, bands and modes used, etc.

**Logs Received** – In 2016 we received 215 logs with 120 being from outside the state and 95 from inside. In 2015 the distribution of logs from inside and outside was essentially equal with 144 being from outside and 146 from inside. This indicates that the party needs some rejuvenation especially inside the state where the number of logs dropped by about 33%. Every year a significant number of stations take part in the party, as evidenced by their calls being in a number of submitted logs, but, for one reason or another, fail to submit a log. A by-product of the log processing is a Received Stations Report which lists the number of logs in which each station appears and the number of QSOs represented. The following data pulled from this report gives an indication of additional logs that could have been received but were not.

QSOs in Rcvd Logs	Number of No Log Stations
400	1
300	1
200	1
100	7
75	12
50	25
25	72
10	236

In this table the first column is a number of QSOs in submitted logs where a station is listed as the received station. The second column is the number of stations that did not submit a log but where the number of reported QSOs with that station is greater than or equal to the number in the first column. So, for example, there were 7 stations that were reported in more than 100 QSOs in the submitted logs but did not submit a log. There were 72 stations that were reported in more than 25 QSOs in the submitted logs but did not submit a log. So, taking the 25 QSO level as a threshold for submitting a log the total logs received could have been  $215 + 72 = 287$ . An important question along these lines is why many stations fail to submit a log, especially the 25 or so that were reported to have made 50 or more QSOs, and what can be done to increase the number of submissions from this group.

**Band Statistics:** The 40m and 20m bands continue to be the primary bands for the party. Here’s how the break down went in 2016.

Band	Percent of QSOs
160	<1
80	~1
40	36
20	63
15	<1
10	<1

# Texas QSO Party – 2016

**Mode Statistics:** CW continues to be the most popular mode, perhaps due to the large number of QSOs made by mobiles and the fact that CW is the easier mode from a mobile. The breakdown in 2016 was 60% CW and 40% SSB across all logs. There was also a very small number (<1%) of RTTY QSOs that are embedded in the CW QSOs.

**Butt-in-Chair Stations** – These are the stations that were active in every hour of the contest by virtue of the fact that they made at least one contact in each hour, but of course in many cases, it was much more than one QSO in each hour. We certainly appreciate these operators, and their chairs, for the support they show for the TQP.

- **Mobiles:** K5YAA, NM5G, NO5W, W0BH, W5CT, WB0TEV
- **Texas Fixed:** AE5GT, K5IZO, K5LLA, N5DO, W5DXS, WB5BKL, WB8LBZ
- **Out-of-state:** K3TW, N6MU, VE3KZ, VE5SDH, WA6KHK, WB8WKQ, WB9CIF, WJ9B

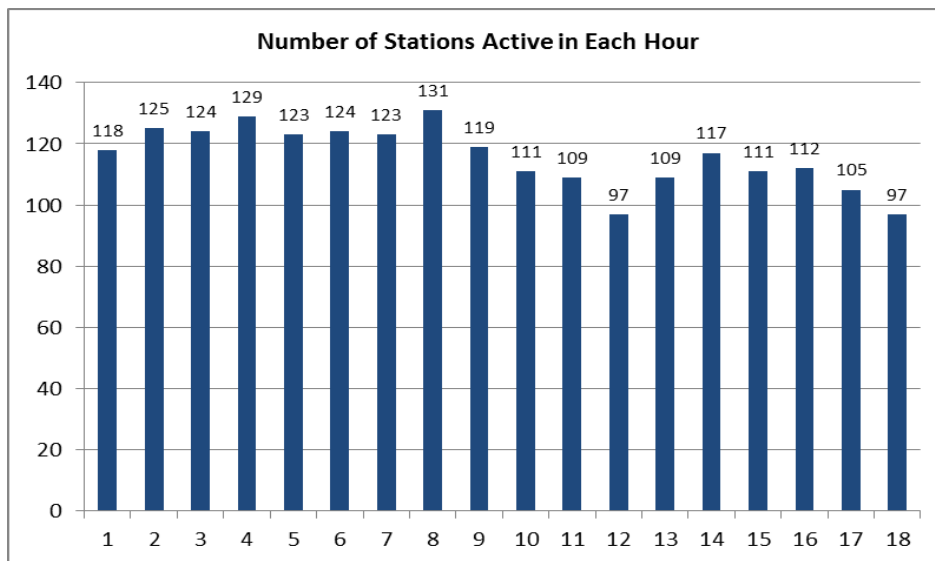
Then there were a few who missed BIC status by only one hour

- Texas Fixed: KI5MM, N5VPC, WA8ZBT
- Out-of-state: K2ZR, K8QWY, NW0M, W1END

And finally a few who missed BIC status by only two hours

- **Mobiles:** KS5A, N5NA, WA5DSS,
- **Texas Fixed:** AC4CA, N1CC, WC5D, WM5Q
- **Out-of-state:** AC0CU, K4MM, VE3KP, VE7CV, W7GF, KN4Y

**Activity Levels** – Here are some charts showing the level of activity from several different viewpoints. The first chart shows the number of active stations in each hour, for stations that submitted a log.





## Texas QSO Party – 2016

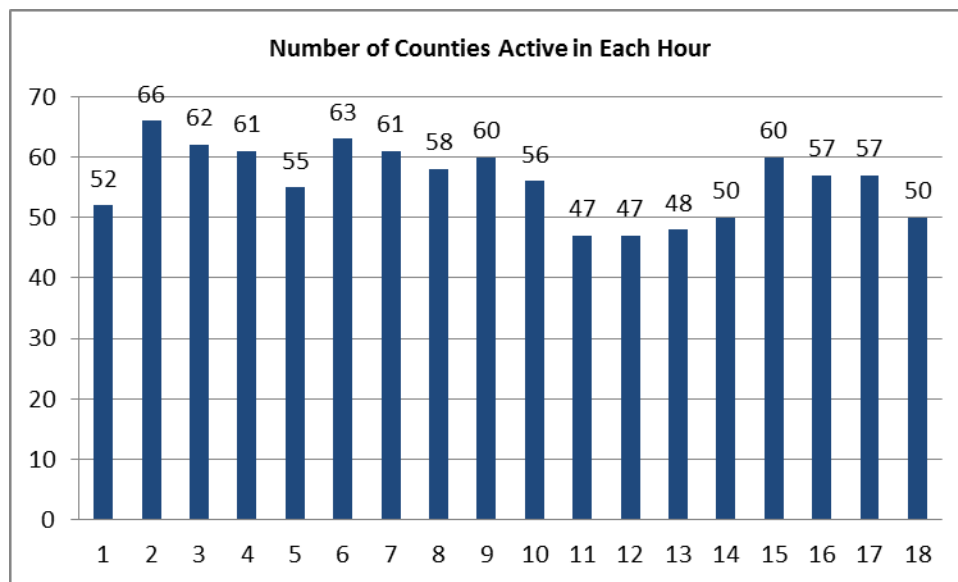
---

The number of stations active in the contest remains fairly constant through hour 9 (hour beginning 2200 UTC) and then begins falling off until hour 12 (the last hour of the first session). The second session includes the last six hours where the activity is somewhat lower than during the first session.

**County Activity** – The ten most active counties in terms of number of QSOs are shown in this table. As one would expect multi-ops and proximity to population centers have a strong influence on these results. It’s also interesting to note that of the ten counties having the most QSOs only the top three were active all 18 hours of the contest. Also seven of the top ten had more SSB QSOs than CW.

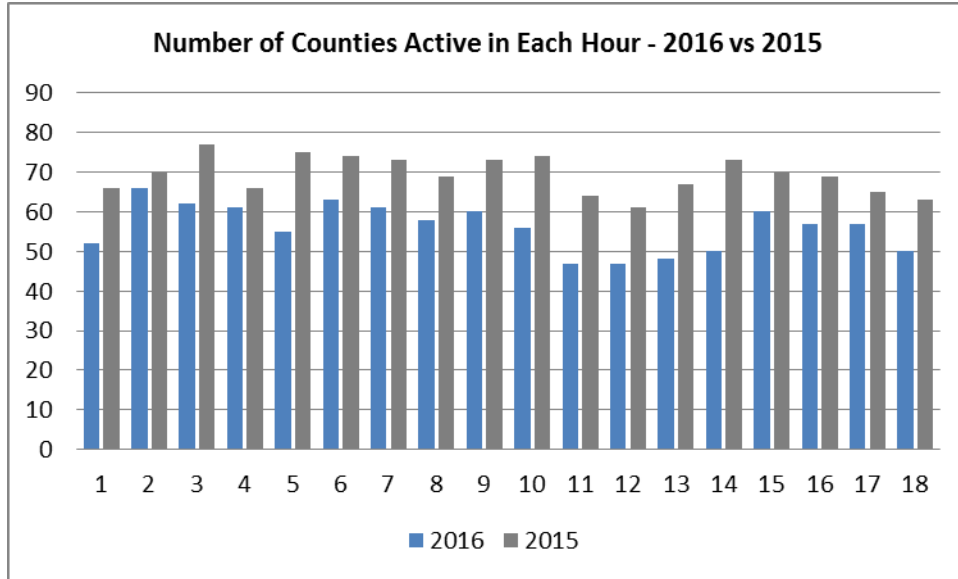
County	CWQs	PHQs	Total Qs	Active Hours
Williamson	1	1409	1410	18
Galveston	390	559	949	18
Dallas	838	55	893	18
Bastrop	0	751	751	15
Harris	197	547	744	17
Gillespie	559	5	564	16
Johnson	159	363	522	10
Bandera	100	349	449	15
Grayson	69	377	446	14
Midland	428	10	438	13

**Overall County Activity** – The following series of charts shows the activity from an overall QSO party perspective: Number of counties active in each hour and cumulative number of different counties activated since the start of the party.

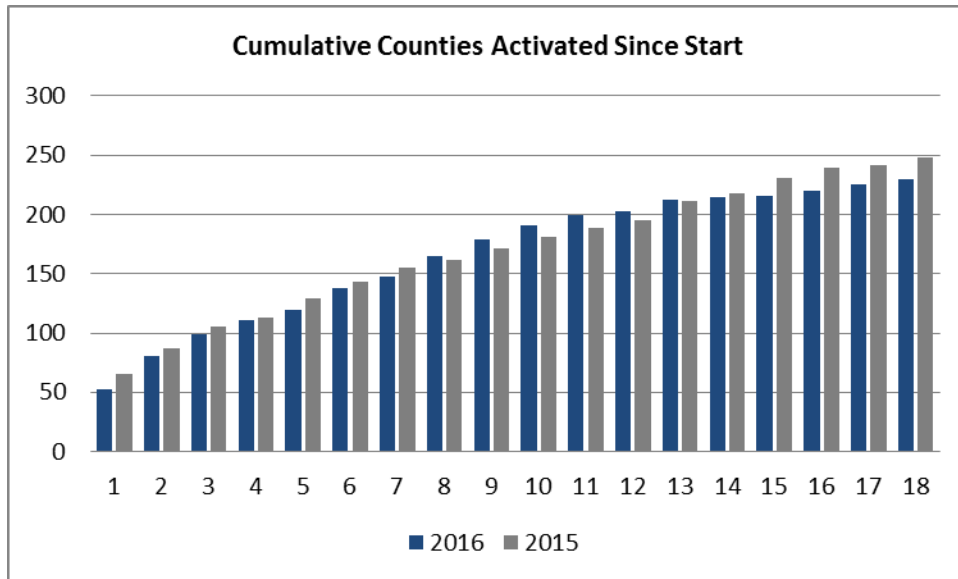


On average the number of counties on the air was around 56. The following chart compares the number of counties active in each hour in 2016 vs 2015 where the decrease in county activity is obvious.

# Texas QSO Party – 2016



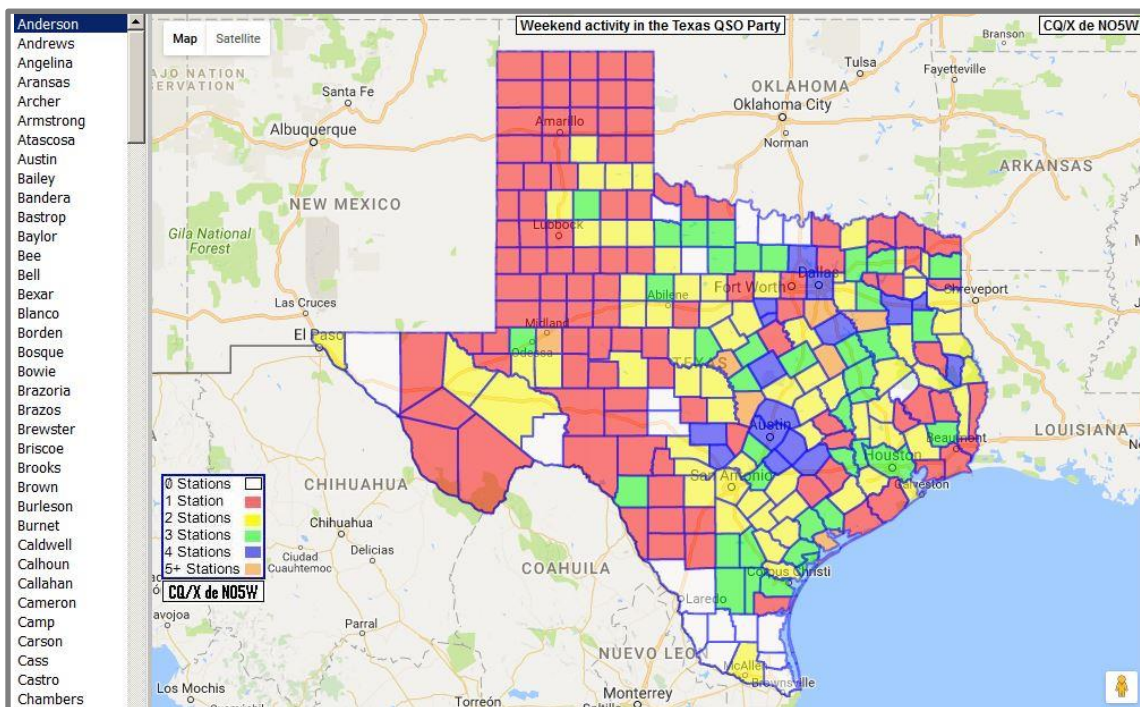
The following chart shows the cumulative number of counties activated since the start of the party while also comparing the two years 2016 and 2015. It is interesting to note that 2016 essentially keeps up with 2015 until the second session (Sunday session) when 2016 “runs out of gas”. In fact at the close of the first session (hour 12) more counties were activated in 2016 than in 2015 but then once the Sunday session starts 2015 continues toward its end state of 248 counties and 2016 falls behind eventually ending up at 230 counties.



**County Coverage and Coordination** – While the above chart indicates that we fell short again from our yearly goal of activating all 254 counties it still represents a significant achievement. Consider that 230 counties is more counties than any other state QSO party has to try to activate – GA has 169 and is the closest one to Texas’s 254. Many parties with far fewer counties struggle to activate all of their counties. So 230 activations is excellent but we of course would like to do better and one of these years reach the

## Texas QSO Party – 2016

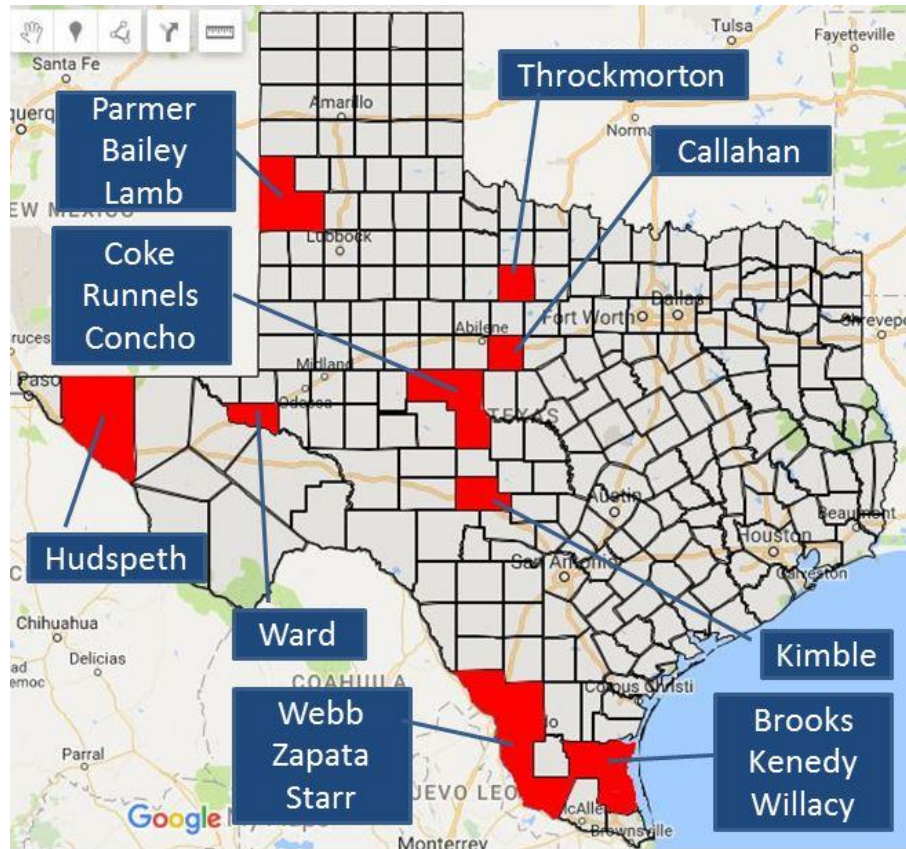
254 county mark. With 254 counties to activate and with more than a few of those counties containing no active HF operators mobile operation becomes an important part of the strategy for activating all the counties. And with a limited number of mobiles an important part of the strategy is coordinating (another term for pleading, begging, and arm-twisting) to the extent possible, who will go where. For this we make use of Google Maps to publish known plans in the last month or so during the run-up to the party. Mobiles are requested to consult maps of the following type, accessible from the TQP website, when making their plans and to see if perhaps a small tweak in their planned route could help activate an additional county or two. As indicated on the legend counties colored red are those that have only one station planning to operate from there and that the counties colored white have no announced plans for activation.



**Counties Missing in Action** – As you can see from the Cumulative Counties Activated chart on page 17 only 230 of the 254 were activated. No QSOs were logged from the following counties in the received logs: Bailey, Brooks, Callahan, Coke, Concho, Hudspeth, Kenedy, Kimble, Lamb, Parmer, Runnels, Starr, Throckmorton, Ward, Webb, Willacy, and Zapata. The sharp-eyed reader will note that there are only 17 counties in this list which would indicate that 237 were activated rather than the 230 indicated in the discussion following the chart showing “Cumulative Counties Activated Since Start”. The reason for that apparent discrepancy is that the “Cumulative Counties ...” chart was based on sent counties in received logs. Sent counties in received logs is considered firm evidence. However, a review of the list of the 24 missing counties reveals that there were 7 counties that were obviously activated but in which the activating station did not submit a log. Those 7 counties have been removed from the missing counties list.

## Texas QSO Party – 2016

One might wonder, perhaps in preparation for the 2017 TQP where those 17 missing counties are located so that one might saddle up old paint and ride out to activate them. Here is a map showing the locations of those missing counties. Put that into your planning for a mobile trip in 2017 or if you know hams with HF capability in some of those counties convince them to get on the air during TQP.



There are several obvious clusters that, with some clever route design, could be covered by a single mobile. For example the Brooks, Kenedy, Willacy and Webb, Zapata, Starr pair of clusters could apparently be covered by a mobile that resides in the area. However, these six counties can be tough and looks can be deceiving when simply looking at an outline map without considering where the roads will actually take you. Several of these counties have been on the lists of missing counties in previous TQPs so it must not be trivial to activate them.

**The Log Checking Process** – Finally, here is a brief overview of the log checking process. If your score published in the score listings isn't exactly what you thought it should be here is where you may have lost some QSOs and in some cases a multiplier or two.

1. Each received log is reviewed for proper format and where necessary converted to a standard Cabrillo format and imported into a SQL database (MySQL).
2. A PHP script is run against the database with the goal of matching up QSOs from each log with corresponding QSOs from the other log. Matching is done on the basis of Band, Mode, Call, Sent QTH, and Received QTH. The output of this script is a set of three files for each submitted entry

## Texas QSO Party – 2016

---

- a. **Verified log file** - this is a file containing all of the QSOs for which a matching QSO was found in the other submitted log and it is the file that will eventually be scored after the review of the following two files is complete.
  - b. **NIL file** – this is a file containing those QSOs for which a matching QSO was not found in the other submitted logs
  - c. **Uniques file** – this is a file containing all of the QSOs with stations that did not submit a log and whose call does not appear in any other submitted logs
3. Using software-assisted manual review (there is software to help but a person is also involved), each QSO in the NIL file for each entry is reviewed to determine why no matching QSO was found. If it is determined that the failure to find a match was due to a logging error by the other station the QSO is put back into the Verified log file. Otherwise the QSO is held out.
  4. Using software-assisted manual review each QSO in the Uniques file for each entry is reviewed to determine if the call logged is a busted version of a call from a station that submitted a log. If it is not determined to be a busted call then the QSO is put back into the Verified log file.
  5. Upon completion of the above steps for all of the submitted logs an automated process is run to score all of the Verified Log Files.

Note: You may request a copy of the above three files and the resulting analysis for your entry by sending an email to [no5w.chuck@gmail.com](mailto:no5w.chuck@gmail.com).

### **Some Common Logging Problems** – Here are some common score-reducing problems to avoid

1. Failure to use the correct abbreviation when logging a Texas county or a US state. Examples here would be logging JACK when working someone in Jackson (JKSN) County, logging COMA when working someone in Comal (COML), logging MONT when working someone in Montgomery (MGMY). There is a JACK County whose abbreviation is JACK, COMA is the abbreviation for Comanche County, and MONT is the abbreviation for Montague County.
2. Sending the wrong abbreviation for a county you are in. Prime examples are sending MONT when you are in Montgomery (MGMY), and sending COMA when you are in Comal (COML).
3. Failure to check that your logging program has correctly recorded your sent information. A prime example here is Texas users of N1MM failing to note that the program logged the sent QTH as TX or TEXAS rather than the county that you actually sent. This usually does not result in loss of points since logs having this problem are returned to sender for correction. But it creates additional work for the log checkers – not a good thing.
4. Failure to log the correct QTH when working a DX station. Texas stations receive multiplier credit for each DX entity worked so contacts with DX stations should be logged with the primary prefix of the DX entity. For example DX is not a valid QTH when working DL3DXX but DL is; similarly if you work SP9LJD the correct QTH to log is SP.
5. Failure to log the correct band or mode on which the QSO took place. This one requires some judgment on the part of the log checker since it is sometimes not conclusive as to which of the stations made the error. If that is the only error in that case the QSO is allowed back into the valid QSOs file for both stations. But keep in mind that having the wrong band in your log can cause you a score reduction even if the QSO is put back into the log. For example you worked a station on 40m and then worked him again on 20m but logged it as 40m. During scoring of your log that second 40m QSO with the station will be considered a dupe and will not count. However, if a station consistently

## Texas QSO Party – 2016

---

has a mismatch in band or mode whereas the other station does not then the QSO is not allowed back into the valid QSOs file. These problems are easily avoided by interfacing your radio and logging program.

6. Finally be sure that your logging program has your call correct. That's right, your call. One operator who has an "oh" in his call (not NO5W!) typed a zero instead so his call in the log file name as well as in the log itself came out KA60XYZ and it took a choir of log checkers a good half hour to figure out why that operators log was not showing up in the results.

**Conclusion** – During this report we have pointed out several times that activity levels were not as high in 2016 as they have been in the past. This, of course, can be partly due to the Sun creating poor conditions not conducive to great participation. We can't do much about the Sun and probably should plan on several more years of poor conditions as we go through the trough of the sunspot cycle. We can, however, do something about creating more interest in the party, and it must start with Texas operators since we are the focus of the party. By my count in 2016 we had 134 Texas hams involved in TQP. If half of those 134 were able to recruit one new participant we would reach the 200 level! So, if you enjoy the TQP you should get out and do some recruiting on your own. Talk it up at your club, at any ham fest you attend, etc. The TQP can always use more mobiles and mobile operation can be a lot of fun as you motor around the state and as you cross into each new county working down the pileup. So consider going mobile in the future, preferably with a driver/co-operator.

So that's the 2016 Texas QSO Party story and we're sticking to it. However, if you find any errors, like having you in the wrong club or category drop us an email at our QRZ address and we will review and make any valid corrections. Thanks to all who took the time to participate in the 2016 Texas QSO Party.

73/Chuck/NO5W

# Texas QSO Party – 2016

---

## **Revision History**

Rev 0: Original draft

Rev 1: Corrected the category of N1CC from TX-SO-MIX to TX-SO-QRP.