

Revision 3.0

June 26, 2018



Texas QSO Party 2017 Results

Prepared by:

Chuck – NO5W

Texas QSO Party - 2017

Introduction

The Atlantic hurricane season runs from June 1 – November 30 each year with the most active month being September. With the Texas QSO Party scheduled for the last full weekend of September, each year there is a chance that the TQP will be impacted by a hurricane. This year that chance became a reality with Hurricane Harvey developing rapidly, escalating from a depression to a full-blown hurricane in a matter of about forty hours and making landfall between Port Aransas and Port O’Conner in the coastal bend region of Texas but with impacts from extremely heavy rains felt all the way around the bend to Houston and Beaumont and on into southwest Louisiana. Even though Harvey made landfall in mid-August and finally left the area in early September, recovery efforts were still in full swing by the time of the TQP and undoubtedly played a major role in the inactivity of coastal counties as we’ll see in a later section where we review the counties that were on the air and those that were not.

This report summarizes the results of the 2017 Texas QSO Party including individual scores in each category including a comparison to the top scores in 2016, Texas club aggregate scores, analysis of the participation levels, and a summary of the county activity. Also included is a brief description of the log checking process along with some comments on frequently occurring logging errors for future reference. Each log submitted, from the largest down to the smallest is checked in detail for accuracy to the extent made possible given the logs that are received. If you would like to receive a copy of the log checking files from the review of your log please contact NO5W at his QRZ address.

In the following tables Score* is the score before applying any bonus whereas Final Score includes the bonus. The following two types of bonus points are available in the TQP.

- **Mobile County Activation Bonus** – Each county from which a mobile makes five or more contacts earns the mobile a bonus of 1000 points.
- **Mobile Tracking Bonus** – For any station, fixed or mobile, 500 bonus points are awarded for each group of five different counties that the station has a QSO with a given mobile.

US-Canada (Non-Texas) Individual Player Scores

Non-Texas Single Op CW Only Category - The NTX-SO-CWO category continues to be a popular one with fifty-three entries making 3185 contacts in 2017 for an average of about 60 QSOs per entry. While there were a few more entries in 2017 (53 vs 49) the average QSOs per entry was down a bit (60 vs 68) from 2016. As usual the number of mults was the real separator of the top scoring entry N6MU from the second and third place entries. It’s interesting to note that the top three scores in this category were made by the same top three operators as in 2016 and also interesting to compare their results in 2017 versus those in 2016.

Texas QSO Party - 2017

2016 Top Three Scores in NTX-SO-CWO

Call	Category	CWQs	QsoPts	Mults	Score*	Bonus	Final Score
N6MU	NTX-SO-CWO	294	882	186	164052	18000	182052
VE3KZ	NTX-SO-CWO	268	804	165	132660	15000	147660
WB9CIF	NTX-SO-CWO	223	669	151	101019	14000	115019

2017 Top Three Scores in NTX-SO-CWO

Call	Category	CWQs	QSO Points	Mults	Score*	Bonus	Total Score
N6MU	NTX-SO-CWO	229	687	143	98241	13500	111741
VE3KZ	NTX-SO-CWO	215	645	120	77400	9500	86900
WB9CIF	NTX-SO-CWO	201	603	119	71757	9000	80757

The significant reduction in mults from 2016 to 2017 (N6MU down 43, VE3KZ down 45, and WB9CIF down 32) is undoubtedly due to the reduced number of Texas counties that were on the air, a lot of that decrease being due to Harvey. Poor band conditions were another factor contributing to the decrease. The following table shows scores of all of the entries in the NTX-SO-CWO category. Congratulations to John-N6MU for winning this category in consecutive years (actually John's win is one of many consecutive years – aka a dynasty!) Also congratulations to the other top scoring operators Bob-VE3KZ and Mark-WB9CIF for their continuing top scoring efforts and support of the TQP. Thanks to all operators for your participation and support of the TQP.

Call	Category	CWQs	QSO Points	Mults	Score*	Bonus	Final Score
N6MU	NTX-SO-CWO	229	687	143	98241	13500	111741
VE3KZ	NTX-SO-CWO	215	645	120	77400	9500	86900
WB9CIF	NTX-SO-CWO	201	603	119	71757	9000	80757
KE0TT	NTX-SO-CWO	145	435	87	37845	5500	43345
K0AP	NTX-SO-CWO	112	336	93	31248	7000	38248
W5TM	NTX-SO-CWO	136	408	81	33048	4500	37548
KN4Y	NTX-SO-CWO	112	336	81	27216	4500	31716
W2RR	NTX-SO-CWO	124	372	74	27528	3000	30528
K9IG	NTX-SO-CWO	121	363	61	22143	2500	24643
K8FU	NTX-SO-CWO	98	294	67	19698	3500	23198
NY9P	NTX-SO-CWO	87	261	68	17748	4000	21748
K5UV	NTX-SO-CWO	91	273	63	17199	3500	20699
W7GF	NTX-SO-CWO	76	228	67	15276	4500	19776
NW0M	NTX-SO-CWO	91	273	61	16653	2500	19153
K4ZGB	NTX-SO-CWO	97	291	53	15423	2000	17423
K8JQ	NTX-SO-CWO	83	249	52	12948	1500	14448
K0PV	NTX-SO-CWO	80	240	51	12240	2000	14240
NN0U	NTX-SO-CWO	80	240	53	12720	1000	13720
W0UY	NTX-SO-CWO	71	213	52	11076	2000	13076
VE3AQ	NTX-SO-CWO	67	201	40	8040	1000	9040
K0VBU	NTX-SO-CWO	58	174	43	7482	1000	8482

Texas QSO Party - 2017

KI4MZC	NTX-SO-CWO	50	150	42	6300	1500	7800
VE3KP	NTX-SO-CWO	56	168	36	6048	1000	7048
N4VV	NTX-SO-CWO	52	156	34	5304	1000	6304
K8MR	NTX-SO-CWO	44	132	35	4620	1000	5620
K6AR	NTX-SO-CWO	42	126	32	4032	500	4532
N2CQ	NTX-SO-CWO	33	99	25	2475	500	2975
N4NQ	NTX-SO-CWO	33	99	25	2475	500	2975
K2ZR	NTX-SO-CWO	38	114	26	2964	0	2964
W1END	NTX-SO-CWO	35	105	21	2205	500	2705
VE5GC	NTX-SO-CWO	27	81	26	2106	500	2606
K7GM	NTX-SO-CWO	35	105	24	2520	0	2520
K6CSL	NTX-SO-CWO	26	78	22	1716	500	2216
VE3XT	NTX-SO-CWO	30	90	23	2070	0	2070
K9GDF	NTX-SO-CWO	30	90	22	1980	0	1980
K9OZ	NTX-SO-CWO	31	93	19	1767	0	1767
K7ULS	NTX-SO-CWO	22	66	19	1254	500	1754
NA4K	NTX-SO-CWO	26	78	22	1716	0	1716
KM4FO	NTX-SO-CWO	22	66	16	1056	500	1556
WA0IYY	NTX-SO-CWO	27	81	17	1377	0	1377
W4ZPR	NTX-SO-CWO	24	72	19	1368	0	1368
KB9O	NTX-SO-CWO	27	81	16	1296	0	1296
AA8TA	NTX-SO-CWO	23	69	15	1035	0	1035
NX4N	NTX-SO-CWO	13	39	12	468	0	468
W7JKC	NTX-SO-CWO	11	33	10	330	0	330
WM5F	NTX-SO-CWO	10	30	9	270	0	270
N1NN	NTX-SO-CWO	9	27	8	216	0	216
W9CF	NTX-SO-CWO	8	24	8	192	0	192
KF3G	NTX-SO-CWO	9	27	7	189	0	189
N6MRS	NTX-SO-CWO	8	24	6	144	0	144
K2HT	NTX-SO-CWO	4	12	4	48	0	48
KF4QFJ	NTX-SO-CWO	4	12	4	48	0	48
N5ZO	NTX-SO-CWO	2	6	2	12	0	12

Non-Texas Single Op Phone Only Category - The NTX-SO-PHO category also continues to be a popular one and in 2017 gained some ground that it lost in 2016 in terms of number of entries received. The category had 43 entries in 2015, 33 entries in 2016 and 47 in 2017. Average number of QSOs made by the entrants in this category was approximately 25 which is about the same average as in 2016. The significant difference in mults and bonus points between the NTX-SO-PHO and NTX-SO-CWO is a reflection not only of the reduced number of counties on the air but also of the difficulty of doing mobile phone and the resulting smaller number of mobiles operating phone versus CW.

Texas QSO Party - 2017

2016 Top Three Scores in NTX-SO-PHO

Call	Category	PHQs	QsoPts	Mults	Score*	Bonus	Final Score
W6AFA	NTX-SO-PHO	269	538	115	61870	4500	66370
AC0CU	NTX-SO-PHO	52	104	47	4888	2000	6888
K5ZZR	NTX-SO-PHO	60	120	45	5400	500	5900

2017 Top Three Scores in NTX-SO-PHO

Call	Category	PHQs	QSOpts	Mults	Score*	Bonus	Final Score
N5XTR	NTX-SO-PHO	99	198	67	13266	1500	14766
W6AFA	NTX-SO-PHO	104	208	59	12272	500	12772
KD5ILA	NTX-SO-PHO	87	174	54	9396	0	9396

Here are all of the scores for the NTX-SO-PHO category. Congratulations to the top scoring operators and thanks to all operators for your participation and support of the TQP.

Call	Category	PHQs	QsoPts	Mults	Score*	Bonus	Final Score
N5XTR	NTX-SO-PHO	99	198	67	13266	1500	14766
W6AFA	NTX-SO-PHO	104	208	59	12272	500	12772
KD5ILA	NTX-SO-PHO	87	174	54	9396	0	9396
K5ZZR	NTX-SO-PHO	56	112	44	4928	500	5428
KF5ZPL	NTX-SO-PHO	47	94	39	3666	500	4166
W4SLT	NTX-SO-PHO	61	122	34	4148	0	4148
W4KW	NTX-SO-PHO	51	102	34	3468	500	3968
AB5TH	NTX-SO-PHO	39	78	35	2730	0	2730
W4LID	NTX-SO-PHO	38	76	29	2204	500	2704
K4AKK	NTX-SO-PHO	39	78	31	2418	0	2418
WA1SAY	NTX-SO-PHO	33	66	29	1914	500	2414
W1KDA	NTX-SO-PHO	34	68	27	1836	500	2336
KE3ZT	NTX-SO-PHO	43	86	25	2150	0	2150
W2CSI	NTX-SO-PHO	26	52	24	1248	500	1748
W4ODB	NTX-SO-PHO	33	66	25	1650	0	1650
K4MV	NTX-SO-PHO	26	52	22	1144	500	1644
KE0JMK	NTX-SO-PHO	24	48	22	1056	500	1556
WZ6ZZ	NTX-SO-PHO	20	40	19	760	500	1260
W5TCB	NTX-SO-PHO	26	52	22	1144	0	1144
K4WLG	NTX-SO-PHO	26	52	20	1040	0	1040
KM4WPR	NTX-SO-PHO	25	50	19	950	0	950
AE6PL	NTX-SO-PHO	21	42	20	840	0	840
KC9ZDA	NTX-SO-PHO	17	34	17	578	0	578
K7HKR	NTX-SO-PHO	18	36	15	540	0	540
KM4IAJ	NTX-SO-PHO	17	34	14	476	0	476
K4VBM	NTX-SO-PHO	15	30	14	420	0	420
KC6MIE	NTX-SO-PHO	15	30	14	420	0	420

Texas QSO Party - 2017

N5MKY	NTX-SO-PHO	14	31	12	372	0	372
K1AUS	NTX-SO-PHO	13	26	13	338	0	338
KW4NN	NTX-SO-PHO	14	28	12	336	0	336
KM4NOW	NTX-SO-PHO	12	24	12	288	0	288
N0DOW	NTX-SO-PHO	11	22	10	220	0	220
KD4QMY	NTX-SO-PHO	10	20	10	200	0	200
AI4DB	NTX-SO-PHO	9	18	9	162	0	162
KC3HEO	NTX-SO-PHO	10	20	8	160	0	160
N0ZTO	NTX-SO-PHO	6	12	6	72	0	72
VE3PYJ	NTX-SO-PHO	5	10	4	40	0	40
AG7AA	NTX-SO-PHO	4	8	4	32	0	32
KC9TCP	NTX-SO-PHO	4	8	4	32	0	32
KE7GKI	NTX-SO-PHO	4	8	4	32	0	32
KG4TTT	NTX-SO-PHO	3	6	3	18	0	18
VE2GT	NTX-SO-PHO	3	6	3	18	0	18
KK6VZE	NTX-SO-PHO	2	4	2	8	0	8
VA3WPS	NTX-SO-PHO	2	4	2	8	0	8
W9MCP	NTX-SO-PHO	2	4	2	8	0	8
AA6SF	NTX-SO-PHO	1	2	1	2	0	2
AE7VA	NTX-SO-PHO	1	2	1	2	0	2

Non-Texas Single Op Mixed Mode Category - The NTX-SO-MIX category, which has typically seen the smallest participation of the non-Texas single operator categories, actually had an increase in number of entries in 2017 with 35 entries versus 29 in 2016. The average number of QSOs in this category was 57 CW and 28 Phone and the average number of QSOs was about 84. The average split between CW and Phone QSOs was CW=69% and Phone = 31%. As in the other NTX-SO categories the mults and final score were down significantly from their 2016 levels. Although irrelevant from a competition perspective, since competition is within and not across categories, it is also interesting from an overall TQP perspective to note the additional mults available to the top scoring station in the NTX-SO-MIX category (124) versus the top scoring station in the NTX-SO-PHO category (67). Congratulations to Frank-WA6KHK for winning the NTX-SO-MIX category in consecutive years and thanks to Jeff-N8II for keeping this a close race.

2016 Top Three Scores in NTX-SO-MIX

Call	Category	CWQs	PHQs	QsoPts	Mults	Score*	Bonus	Final Score
WA6KHK	NTX-SO-MIX	191	282	1137	186	211482	15000	226482
WB8WKQ	NTX-SO-MIX	163	164	817	142	116014	7500	123514
K4MM	NTX-SO-MIX	160	66	612	156	95472	12500	107972

2017 Top Three Scores in NTX-SO-MIX

Call	Category	CWQs	PHQs	QSOpts	Mults	Score*	Bonus	Final Score
WA6KHK	NTX-SO-MIX	140	196	812	124	100688	9000	109688
N8II	NTX-SO-MIX	143	156	741	126	93366	6000	99366
K4BAI	NTX-SO-MIX	163	52	593	110	65230	6000	71230

Texas QSO Party - 2017

Here are all of the scores in the NTX-SO-MIX category.

Call	Category	CWQs	PHQs	QsoPts	Mults	Score*	Bonus	Final Score
WA6KHK	NTX-SO-MIX	140	196	812	124	100688	9000	109688
N8II	NTX-SO-MIX	143	156	741	126	93366	6000	99366
K4BAI	NTX-SO-MIX	163	52	593	110	65230	6000	71230
VE5SDH	NTX-SO-MIX	145	20	475	108	51300	7500	58800
K4MM	NTX-SO-MIX	111	64	461	107	49327	6500	55827
K0HNC	NTX-SO-MIX	122	17	400	102	40800	7000	47800
KE5XX	NTX-SO-MIX	104	53	418	101	42218	3500	45718
W9OA	NTX-SO-MIX	86	17	292	66	19272	2000	21272
NW7E	NTX-SO-MIX	74	19	260	65	16900	3500	20400
WD5F	NTX-SO-MIX	59	35	247	55	13585	1500	15085
AF5CC	NTX-SO-MIX	66	20	238	58	13804	1000	14804
WB9HFK	NTX-SO-MIX	72	10	236	53	12508	2000	14508
NO5W	NTX-SO-MIX	69	6	219	57	12483	2000	14483
NC2V	NTX-SO-MIX	45	40	215	58	12470	1500	13970
W0BH	NTX-SO-MIX	65	9	213	50	10650	2000	12650
VE3AYR	NTX-SO-MIX	55	9	183	47	8601	1500	10101
WA0LIF	NTX-SO-MIX	46	22	182	38	6916	500	7416
N2CU	NTX-SO-MIX	47	13	167	35	5845	1000	6845
KX4FR	NTX-SO-MIX	30	24	138	40	5520	1000	6520
WA5SOG	NTX-SO-MIX	42	16	158	37	5846	500	6346
AH6AX	NTX-SO-MIX	37	24	159	34	5406	0	5406
W4JL	NTX-SO-MIX	36	15	138	36	4968	0	4968
N3RJ	NTX-SO-MIX	27	25	131	35	4585	0	4585
W7TR	NTX-SO-MIX	28	4	92	29	2668	500	3168
W8KNO	NTX-SO-MIX	22	19	104	30	3120	0	3120
K7IA	NTX-SO-MIX	33	3	105	28	2940	0	2940
K7DBN	NTX-SO-MIX	13	22	83	27	2241	0	2241
AA7TV	NTX-SO-MIX	15	17	79	27	2133	0	2133
N1SOH	NTX-SO-MIX	21	10	83	23	1909	0	1909
WA2JQZ	NTX-SO-MIX	17	10	71	21	1491	0	1491
W2ARP	NTX-SO-MIX	13	12	63	22	1386	0	1386
KCOHPM	NTX-SO-MIX	14	2	46	12	552	0	552
W2UDT	NTX-SO-MIX	8	6	36	13	468	0	468
K2RYD	NTX-SO-MIX	7	2	25	8	200	0	200
W6SFI	NTX-SO-MIX	3	2	13	3	39	0	39

Non-Texas Single Op QRP Category - The NTX-SO-QRP category is tough in times of good conditions and in the conditions that we experienced in 2016-17 operating in this category required dedication on the part of the QRP operator and excellent ears on the part of the receiving stations. Again this year, this category was very slim with only three entries as compared to twelve entries in 2015. Again the mults

Texas QSO Party - 2017

obtained by the top scoring operator in this category in 2017 are about half of what the same operator was able to get in 2016. Congrats to Tom-K3TW for consecutive year wins in this category.

2016 Top Three Scores in NTX-SO-QRP

Call	Category	CWQs	PHQs	QsoPts	Mults	Score*	Bonus	Final Score
K3TW	NTX-SO-QRP	180	60	660	139	91740	10500	102240
W4VG	NTX-SO-QRP	11	0	33	9	297	0	297
No Entry	NTX-SO-QRP	-	-	-	-	-	-	-

2017 Top Three (ALL) Scores in NTX-SO-QRP

Call	Category	CWQs	PHQs	QsoPts	Mults	Score*	Bonus	Final Score
K3TW	NTX-SO-QRP	93	21	321	68	21828	3000	24828
W9WB	NTX-SO-QRP	33	22	143	38	5434	1000	6434
W6GMT	NTX-SO-QRP	17	0	51	14	714	0	714

DX Single Op Category –This category held steady in terms of number of logs with six but remained well below the 17 logs recorded in 2015, largely due to the poor conditions. Congratulations to Manfred-DK2OY for his consecutive year wins in this category. Mults and QSOs were down by about 50% in this category. As one would expect the primary mode used was CW but DK2OY did manage to make half a dozen phone QRP QSOs.

2016 Top Three Scores in DX-SO

Call	Category	CWQs	PHQs	QsoPts	Mults	Score*	Bonus	Final Score
DK2OY	DX-SO	121	12	387	105	40635	7000	47635
SP9LJD	DX-SO	98	7	308	78	24024	5500	29524
DL6KVA	DX-SO	40	0	120	33	3960	500	4460

2017 Top Three Scores in DX-SO

Call	Category	CWQs	PHQs	QsoPts	Mults	Score*	Bonus	Final Score
DK2OY	DX-SO	66	6	210	56	11760	3000	14760
HI8A	DX-SO	71	0	213	48	10224	2000	12224
SM5COP	DX-SO	17	0	51	14	714	0	714

Here are all the scores in the DX-SO category.

Call	Category	CWQs	PHQs	QsoPts	Mults	Score*	Bonus	Final Score
DK2OY	DX-SO	66	6	210	56	11760	3000	14760
HI8A	DX-SO	71	0	213	48	10224	2000	12224
SM5COP	DX-SO	17	0	51	14	714	0	714
SM5CIL	DX-SO	13	0	39	11	429	0	429
PA3ARM	DX-SO	7	0	21	7	147	0	147
OF1TD	DX-SO	0	3	6	3	18	0	18

Texas QSO Party - 2017

Texas Individual Player Scores

Texas Single Op CW Only Category – In 2016 the TX-SO-CWO category managed to attract logs from 25 entrants, a reduction of about 33% from the 37 TX-SO-CWO logs received in 2015. The good news for 2017 is that some ground was made up with logs from 30 entries being received. Participants in the TX-SO-CWO category made an average of 182 QSOs and an average of 78 mults. Of course for the Texas stations mults are much more plentiful since mults are available outside of Texas. So the total mults worked by these stations are not as dependent on Texas counties being on the air. In fact the average mults obtained by the top three players as a group were up from 128 to 151 with Clint-AE5GT beating out John-AC4CA even though Clint had 15 fewer QSOs. His 34 additional mults pushed him easily into first place, reversing the finishes of the top two in 2016. AE5GT was also more successful in gathering bonus points with a total of 6500 versus AC4CA's 3000. Scores among the top three in this category were up considerably as you can see from the table below. Rumor has it that Fredericksburg is recruiting contest operators with the latest addition to that area being Gator-N5RZ who finished in third place. It's good to hear Gator operating in the TQP again and we hope that he'll consider going mobile as he has done quite successfully in the past.

2016 Top Three Scores in TX-SO-CWO

Call	Category	CWQs	QsoPts	Mults	Score*	Bonus	Final Score
AC4CA	TX-SO-CWO	499	1497	129	193113	2000	195113
AE5GT	TX-SO-CWO	369	1107	146	161622	6500	168122
K5AX	TX-SO-CWO	276	828	109	90252	1500	91752

2017 Top Three Scores in TX-SO-CWO

Call	Category	CWQs	QsoPts	Mults	Score*	Bonus	Final Score
AE5GT	TX-SO-CWO	483	1449	166	240534	6500	247034
AC4CA	TX-SO-CWO	498	1494	132	197208	3000	200208
N5RZ	TX-SO-CWO	402	1206	156	188136	6000	194136

Here are all of the scores in the TX-SO-CWO category.

Call	Category	CWQs	QsoPts	Mults	Score*	Bonus	Final Score
AE5GT	TX-SO-CWO	483	1449	166	240534	6500	247034
AC4CA	TX-SO-CWO	498	1494	132	197208	3000	200208
N5RZ	TX-SO-CWO	402	1206	156	188136	6000	194136
W4WJ	TX-SO-CWO	384	1152	150	172800	5000	177800
N5PHT	TX-SO-CWO	380	1140	91	103740	0	103740
AJ4F	TX-SO-CWO	277	831	98	81438	1000	82438
W5LXS	TX-SO-CWO	221	663	107	70941	3500	74441
K5AX	TX-SO-CWO	238	714	91	64974	500	65474
W5MT	TX-SO-CWO	198	594	89	52866	2000	54866
W0VX	TX-SO-CWO	175	525	85	44625	1000	45625
K8LS	TX-SO-CWO	189	567	77	43659	500	44159
K1PQS	TX-SO-CWO	202	606	72	43632	0	43632

Texas QSO Party - 2017

K5YQF	TX-SO-CWO	142	426	89	37914	3000	40914
WA8ZBT	TX-SO-CWO	194	582	65	37830	0	37830
W5YDM	TX-SO-CWO	173	519	72	37368	0	37368
W5QLF	TX-SO-CWO	131	393	84	33012	1500	34512
NA5YO	TX-SO-CWO	124	372	81	30132	2000	32132
N5ZK	TX-SO-CWO	164	492	56	27552	0	27552
W0TG	TX-SO-CWO	101	303	79	23937	1500	25437
K5SBR	TX-SO-CWO	91	273	74	20202	3500	23702
K5TIA	TX-SO-CWO	116	348	64	22272	1000	23272
N9OF	TX-SO-CWO	89	267	72	19224	2500	21724
WD5ILB	TX-SO-CWO	87	261	44	11484	0	11484
K5TMT	TX-SO-CWO	68	204	50	10200	1000	11200
AC5AA	TX-SO-CWO	60	180	44	7920	1000	8920
N5AW	TX-SO-CWO	74	222	40	8880	0	8880
W8FN	TX-SO-CWO	60	180	43	7740	0	7740
K5ME	TX-SO-CWO	62	186	29	5394	0	5394
N5XGG	TX-SO-CWO	48	144	33	4752	0	4752
N5ZN	TX-SO-CWO	18	54	16	864	0	864

Texas Single Op Phone Only Category – In 2017 the TX-SO-PHO category managed to attract logs from 40 entrants which was an increase over the 32 entrants in 2016 but still below the 53 TX-SO-PHO logs received in 2015. Entrants in this category made an average of 141 QSOs and 52 mults. For the top three entrants scores were generally up due to an increase in mults. Gene-K5LLA ran away with first place again though this year he seems to have focused more on mults at the slight expense of a reduction in the number of QSOs, but with over 1000 QSOs he had plenty to spare. Congratulations to K5LLA on another fine effort in the TQP.

2016 Top Three Scores in TX-SO-PHO

Call	Category	PHQs	QsoPts	Mults	Score*	Bonus	Final Score
K5LLA	TX-SO-PHO	1232	2464	120	295680	0	295680
K5IZO	TX-SO-PHO	354	708	131	92748	2000	94748
AD5WB	TX-SO-PHO	498	996	90	89640	0	89640

2017 Top Three Scores in TX-SO-PHO

Call	Category	PHQs	QsoPts	Mults	Score	Bonus	Total Score
K5LLA	TX-SO-PHO	1083	2166	152	329232	0	329232
N5IT	TX-SO-PHO	511	1022	127	129794	1000	130794
AD5WB	TX-SO-PHO	447	894	121	108174	1000	109174

Here are the scores of all participants in the TX-SO-PHO category. It's interesting to note that of the 40 entrants in this category only 7 of them chased or found bonus points. But it's difficult to chase bonus points when most of them are on another mode so it's not surprising.

Texas QSO Party - 2017

Call	Category	PHQs	QsoPts	Mults	Score	Bonus	Final Score
K5LLA	TX-SO-PHO	1083	2166	152	329232	0	329232
N5IT	TX-SO-PHO	511	1022	127	129794	1000	130794
AD5WB	TX-SO-PHO	447	894	121	108174	1000	109174
W5JNP	TX-SO-PHO	435	870	116	100920	0	100920
WM5Q	TX-SO-PHO	404	808	121	97768	500	98268
KI4LP	TX-SO-PHO	537	1074	91	97734	0	97734
KJ5MA	TX-SO-PHO	347	694	97	67318	500	67818
NA5DV	TX-SO-PHO	228	456	99	45144	500	45644
AA5DX	TX-SO-PHO	150	300	77	23100	0	23100
WB8LBZ	TX-SO-PHO	106	212	75	15900	2500	18400
N5VYS	TX-SO-PHO	119	238	72	17136	0	17136
KA5GIL	TX-SO-PHO	106	212	70	14840	0	14840
N5KWD	TX-SO-PHO	121	242	54	13068	0	13068
KG5IEE	TX-SO-PHO	87	174	66	11484	1500	12984
N5AJD	TX-SO-PHO	108	216	53	11448	0	11448
KE5RON	TX-SO-PHO	101	202	56	11312	0	11312
WA5TRL	TX-SO-PHO	27	213	52	11076	0	11076
AB5KM	TX-SO-PHO	84	168	51	8568	0	8568
WC5C	TX-SO-PHO	75	150	52	7800	0	7800
KE5ET	TX-SO-PHO	71	142	48	6816	0	6816
KE5OG	TX-SO-PHO	65	130	49	6370	0	6370
K9ING	TX-SO-PHO	69	138	44	6072	0	6072
WD5ENH	TX-SO-PHO	57	114	44	5016	0	5016
KD5FBA	TX-SO-PHO	50	100	40	4000	0	4000
W5DLP	TX-SO-PHO	52	104	38	3952	0	3952
KG5KUQ	TX-SO-PHO	49	98	38	3724	0	3724
N5LTR	TX-SO-PHO	50	100	37	3700	0	3700
AB5XZ	TX-SO-PHO	41	82	34	2788	0	2788
N5DUX	TX-SO-PHO	37	74	34	2516	0	2516
W5AC	TX-SO-PHO	36	72	30	2160	0	2160
WD5RAH	TX-SO-PHO	28	56	26	1456	0	1456
W5TKZ	TX-SO-PHO	24	48	21	1008	0	1008
K5LKJ	TX-SO-PHO	18	36	14	504	0	504
K5WPH	TX-SO-PHO	19	38	13	494	0	494
KU5Y	TX-SO-PHO	15	30	14	420	0	420
KD5TKR	TX-SO-PHO	13	26	12	312	0	312
N5BIA	TX-SO-PHO	13	26	12	312	0	312
KB60JE	TX-SO-PHO	11	22	10	220	0	220
K5ELF	TX-SO-PHO	6	12	6	72	0	72
NM5G	TX-SO-PHO	5	10	4	40	0	40
KE5TM	TX-SO-PHO	2	4	2	8	0	8

Texas QSO Party - 2017

Texas Single Op Mixed Mode Category – In 2017 the TX-SO-MIX category managed to attract logs from 24 entrants up from 10 the previous year and 4 more than in 2015, so it looks like this is a growth area. Participants in this category on average split their QSOs between CW and Phone 56% vs 44%. Several entries were borderline single mode, either CWO or PHO. For those entries, or in fact for any entry, it should be pointed out that it is possible, although it creates a bit of extra work in the log checking, for a station to specify that his log be considered single mode, even though it contains QSOs on the other mode. In that case the other mode QSOs will be considered as a check log – it's something to keep in mind for next year.

Frank-WA2VYA ran away with the top spot in this category with a balanced CW-Phone QSO count and excellent mult count and good tracking of the mobiles for 8500 bonus points. For the top three entrants scores were considerably up with the average 2017 score among the top three being 212700 in 2017 versus 80394 in 2016.

2016 Top Three Scores in TX-SO-MIX

Call	Category	CWQs	PHQs	QsoPts	Mults	Score*	Bonus	Final Score
N5DO	TX-SO-MIX	254	110	982	156	153192	4500	157692
W5VX	TX-SO-MIX	78	148	530	85	45050	0	45050
K0YY	TX-SO-MIX	36	141	390	96	37440	1000	38440

2017 Top Three Scores in TX-SO-MIX

Call	Category	CWQs	PHQs	QsoPts	Mults	Score*	Bonus	Final Score
WA2VYA	TX-SO-MIX	341	381	1785	203	362355	8500	370855
WA5DTK	TX-SO-MIX	62	500	1186	124	147064	500	147564
K5KJ	TX-SO-MIX	262	112	1010	118	119180	500	119680

Here are the results for all entrants in the TX-SO-MIX category. Thanks to all for supporting the TQP.

Call	Category	CWQs	PHQs	QsoPts	Mults	Score*	Bonus	Final Score
WA2VYA	TX-SO-MIX	341	381	1785	203	362355	8500	370855
WA5DTK	TX-SO-MIX	62	500	1186	124	147064	500	147564
K5KJ	TX-SO-MIX	262	112	1010	118	119180	500	119680
K15LR	TX-SO-MIX	52	442	1040	102	106080	0	106080
W5MF	TX-SO-MIX	190	209	988	101	99788	500	100288
K0YY	TX-SO-MIX	159	149	775	109	84475	500	84975
W5NAC	TX-SO-MIX	19	296	649	124	80476	2000	82476
K5IZO	TX-SO-MIX	169	74	655	117	76635	3000	79635
W5TMT	TX-SO-MIX	156	70	608	90	54720	500	55220
K5FO	TX-SO-MIX	121	29	421	96	40416	1500	41916
K5IX	TX-SO-MIX	120	28	416	96	39936	1000	40936
W2MN	TX-SO-MIX	106	8	334	85	28390	4000	32390
K5WL	TX-SO-MIX	71	76	365	60	21900	0	21900
WB7PVL	TX-SO-MIX	123	2	373	51	19023	0	19023
KG5LRP	TX-SO-MIX	2	173	352	50	17600	0	17600
KC5DCT	TX-SO-MIX	90	19	308	46	14168	0	14168

Texas QSO Party - 2017

N5DO	TX-SO-MIX	63	8	205	54	11070	1500	12570
KD2KW	TX-SO-MIX	2	91	188	59	11092	0	11092
K5AEM	TX-SO-MIX	58	11	196	50	9800	1000	10800
W5XD	TX-SO-MIX	69	14	235	45	10575	0	10575
K0NM	TX-SO-MIX	56	24	216	41	8856	0	8856
W5MIG	TX-SO-MIX	55	3	171	37	6327	0	6327
KN5S	TX-SO-MIX	7	17	55	20	1100	0	1100
AE5YP	TX-SO-MIX	8	18	60	18	1080	0	1080

Texas Single Op QRP Category –Even with the poor conditions in 2017 the TX-SO-QRP category held its own with two operators venturing out whereas in 2015 there were three. QRP regular Cranz-WB5BKL continued to hold the top spot with an all CW effort and managed to obtain a nice bonus of 4500 for working mobiles in 5 different counties 9 times with his K3/10 @ 5W feeding various wires strung in the Burnet brush – or is that in the burning bush? On a sad note I’m sorry to report that Jim Laporta – N1CC who was a long-time supporter and participant in TQP, frequently as a QRP entrant, became a silent key a few days before the 2017 TQP. [Here](#) is an interesting write-up about Jim. RIP OM.

2016 Top Three Scores in TX-SO-QRP

Call	Category	CWQs	PHQs	QsoPts	Mults	Score*	Bonus	Final Score
WB5BKL	TX-SO-QRP	159	0	477	88	41976	2500	44476
N1CC	TX-SO-QRP	139	62	541	75	40575	0	40575
KN5L	TX-SO-QRP	80	20	280	62	17360	0	17360

2017 Top Three (ALL) Scores in TX-SO-QRP

Call	Category	CWQs	PHQs	QsoPts	Mults	Score*	Bonus	Final Score
WB5BKL	TX-SO-QRP	196	0	588	113	66444	4500	70944
N5DUX	TX-SO-QRP	0	37	74	34	2516	0	2516
No Entry	TX-SO-QRP	-	-	-	-	-	-	-

From time to time we have an unusual entry along with photos and often this occurs in the QRP category as it did this year with N5DUX’s entry. Here are a few photos of Tom’s setup on Galveston Island where he used a Kite-supported EFHW on the beach with his KX2. Many more details and commentary can be found [on Tom’s website](#). Thanks Tom for playing in the TQP and sharing this.



Texas QSO Party - 2017

Texas Mobile Single Op CW Only Category –The TXM-SO-CWO category held its own this year with one more log entry than in 2016 and a check log of significant size. The top entry, Alan-N5NA, is a regular in this category as is Mark-K5GQ. For the past several years Robert-K5PI has been an active mobile in the TQP operating as W5CT but usually in the Texas Mobile Multi-op category. This year K5PI decided to try his hand in the TXM-SO-CWO category and his decision resulted in one of the closest races that I can remember in a dozen years of doing this. N5NA must have heard the galloping hooves of W5CT driven by Steve-WK5S and dialed up the rate meter and the bonus meter to achieve significant increases over 2016. It's amazing what a difference 8 QSOs and 1 mult can make in a score. Thanks to both N5NA and K5PI (aka W5CT) for an outstanding TQP mobile performance. We keep saying that conditions were the reason for some low scores but you guys managed to show us that there are QSOs and mult to be found and you found them in a big way. Thanks also to Ron-AF5Q for coming over from Oklahoma to help out in the Panhandle and to Norm-W3DYA who made some noise from the Panhandle on his way to a county hunter meeting in Colorado and specified that he wanted his log considered as a check log.

2016 Top Three (ALL) Scores in TXM-SO-CWO

Call	Category	CWQs	QsoPts	Mults	Score*	Bonus	Final Score
N5NA	TXM-SO-CWO	1173	3519	101	355419	29500	384919
KS5A	TXM-SO-CWO	806	2418	82	198276	20000	218276
N3BB	TXM-SO-CWO	39	117	31	3627	2000	5627

2017 ALL Scores in TXM-SO-CWO

Call	Category	CWQs	QsoPts	Mults	Score*	Bonus	Final Score
N5NA	TXM-SO-CWO	1640	4920	107	526440	37000	563440
W5CT(op K5PI)	TXM-SO-CWO	1632	4896	106	518976	37500	556476
K5GQ(@NM5G/M)	TXM-SO-CWO	391	1173	65	76245	20000	96245
AF5Q	TXM-SO-CWO	393	1179	44	51876	21000	72876
W3DYA(Check Log)	TXM-SO-CWO	403	1209	68	82212	19000	101212

Texas Mobile Single Op Phone Only Category –The TXM-SO-PHO category was one of the categories with reduced number of entries in 2017 vs 2016. John-W1JCW made a good showing in the number of QSOs almost equaling the top number of QSOs from 2016 in this category and he also did a good job working mults where his 97 mults bettered those of Victor's 80 from 2016. In head to head competition with WB0TEV from 2016 more bonus points would be needed.

2016 Top Three Scores in TXM-SO-PHO

Call	Category	PHQs	QsoPts	Mults	Score*	Bonus	Final Score
WB0TEV	TXM-SO-PHO	418	836	80	66880	40500	107380
NM5G	TXM-SO-PHO	260	520	48	24960	23000	47960
W1JCW	TXM-SO-PHO	264	528	80	42240	4000	46240

2017 Scores in TXM-SO-PHO

Call	Category	PHQs	QsoPts	Mults	Score*	Bonus	Final Score
W1JCW	TXM-SO-PHO	409	818	97	79346	5000	84346
K15AH	TXM-SO-PHO	189	378	53	20034	22500	42534
WA5DSS	TXM-SO-PHO	140	280	55	15400	13000	28400
W2IK	TXM-SO-PHO	138	276	42	11592	9000	20592
WB5KIA	TXM-SO-PHO	31	62	21	1302	2000	3302

Texas QSO Party - 2017

WB5LJO	TXM-SO-PHO	29	58	28	1624	0	1624
--------	------------	----	----	----	------	---	------

Texas Mobile Single Op Mixed Mode Category –Since the inception of the TXM-SO-PHO category several years ago those operators that previously entered the TXM-SO-MIX category have almost all migrated to the TXM-SO-PHO category leaving the mixed mode category very slim. This year there were two entries in this category, representing an increase of one. Thanks to Bob-N4CD for activating 10 counties in the Panhandle on Saturday on his way to the county hunter convention in Colorado. Also thanks to Larry-K5OT for making a last minute change of plans when the NO5W mobile decided to develop a problem a couple of days before the party. So both of these efforts were part time and were focused primarily on CW. It seems it may be time to evaluate the need for this category. Comments and/or suggestions would be welcome.

2016 Score in TXM-SO-MIX

Call	Category	CWQs	PHQs	QsoPts	Mults	Score*	Bonus	Final Score
W0BH	TXM-SO-MIX	743	617	3463	106	367078	28500	395578

2017 Scores in TXM-SO-MIX

Call	Category	CWQs	PHQs	QsoPts	Mults	Score*	Bonus	Total Score
N4CD	TXM-SO-MIX	438	72	1458	87	126846	10500	137346
K5OT	TXM-SO-MIX	373	4	1127	77	86779	16000	102779

Texas Mobile Multi-Op Category –The TXM-MO category provides an opportunity for two (or more) operators to get together to share the driving and operating usually allowing broader coverage than is possible with a single op plus driver. This year we had only two entries in this category. It is interesting to note the differences in mode preference for the two years with the preferred mode in 2016 being CW and in 2017 Phone. In 2017 K5YAA could not make it down from Oklahoma, W5CT moved from TXM-MO to TXM-SO-CWO, and NO5W had to cancel to stay home with a sick vehicle. Thanks to both of the 2017 entries for providing some needed county coverage increasing the mults available to the Phone Only operators.

2016 Top Three Scores in TXM-MO

Call	Category	CWQs	PHQs	QsoPts	Mults	Score*	Bonus	Final Score
K5YAA	TXM-MO	1464	126	4644	109	506196	42000	548196
W5CT	TXM-MO	1194	303	4188	104	435552	35000	470552
NO5W	TXM-MO	1100	1	3302	87	287274	41000	328274

2017 ALL Scores in TXM-MO

Call	Category	CWQs	PHQs	QsoPts	Mults	Score*	Bonus	Final Score
W5WRL	TXM-MO	0	650	1300	89	115700	17500	133200
K5LOL	TXM-MO	0	166	332	45	14940	12000	26940

Operators: W5WRL: W5WRL, KF5PEL, WB5PYT; K5LOL: K5LOL, K5MBA

Texas Multi-Op Category –The TX-MO category provides an opportunity for two (or more) operators to get together to share the TQP experience in a flexible schedule for those who might not be able to

Texas QSO Party - 2017

devote the entire weekend to the party. This year there were only four entries in this category as compared to 8 in 2016 and 14 in 2015. This group did very well in 2017 with the top three all exceeding the first-place score from 2016. Focus was primarily on Phone with 94% of the QSOs being made on Phone and only 6% on CW. Congratulations to the operators at NU5DE for winning this category in two consecutive years, basking in the sunshine of Bastrop county.

2016 Top Three Scores in TX-MO

Call	Category	CWQs	PHQs	QsoPts	Mults	Score*	Bonus	Final Score
NU5DE	TX-MO	0	741	1482	106	157092	0	157092
W5DXS	TX-MO	269	72	951	158	150258	6000	156258
KN5TX	TX-MO	236	193	1094	124	135656	0	135656

2017 ALL Scores in TX-MO

Call	Category	CWQs	PHQs	QsoPts	Mults	Score*	Bonus	Final Score
NU5DE	TX-MO	0	1144	2288	125	286000	1000	287000
W5RTA	TX-MO	0	888	1776	145	257520	2500	260020
W5FMH	TX-MO	128	546	1476	111	163836	0	163836
K5TYR	TX-MO	26	8	94	24	2256	0	2256

Operators-2017: NU5DE: N5KF, WA4DXP, N5NXS; W5RTA: KI5SC, W5MRM; W5FMH: KM4SII, CE1AT, AG5HQ, KE0HWZ, WR3Y, KJ5Y; K5TYR: W5CUD, K5LXK, W5TG

Texas Club Aggregate Results

Each Texas operator submitting a log can specify which club their score should be contributed to and for each club these scores are summed to create the club's aggregate score. In 2017 there were 16 clubs represented by 63 of the 112 Texas logs submitted. The winner of the club competition receives a traveling trophy as well as a permanent plaque. Here are the summary results showing number of participants and total score for each club. The summary is followed by the details used to compile it. One thing to note from the summary results is that having a large number of logs helps but is not a necessary condition for doing well as shown by the Midland ARC finishing in second place with only five logs.

2016 Top Three Clubs

Club	Entries	Total Score
Central Texas DX & Contest Club	10	1349900
DFW Contest Group	11	655064
Midland ARC	4	601937

2017 Top Three Clubs

Club	Entries	Total Score
Central Texas DX & Contest Club	15	2234512
Midland ARC	5	971289
DFW Contest Group	11	585825

Texas QSO Party - 2017

2017 Aggregate Scores for All Clubs

Club	Entries	Total Score
Central Texas DX & Contest Club	15	2234512
Midland ARC	5	971289
DFW Contest Group	11	585825
Texas DX Society	7	427863
South Texas DX & Contest Club	5	335048
Northwest ARS	4	196885
North Texas Contest Club	1	119680
Brazos Valley ARC	3	84643
Nacogdoches ARC	2	83932
Port Lavaca ARC	2	55834
Sun City ARC	3	20518
Tri-County ARC	2	19284
Houston-SHOT	1	17600
Tyler ARC	1	2256
Texas A&M ARC	1	2160
Southwest Dallas County ARC	1	220

Texas Club Detailed Results

Here are the detailed scores used to compile the Texas Club Aggregate Summary. If your score is contributed to the wrong club please let NO5W know and a review of the log and possible correction will be made.

Call	Category	Club	Final Score
W5CT	TXM-SO-CWO	Central Texas DX & Contest Club	556476
WA2VYA	TX-SO-MIX	Central Texas DX & Contest Club	370855
K5LLA	TX-SO-PHO	Central Texas DX & Contest Club	329232
NU5DE	TX-MO	Central Texas DX & Contest Club	287000
AC4CA	TX-SO-CWO	Central Texas DX & Contest Club	200208
W4WJ	TX-SO-CWO	Central Texas DX & Contest Club	177800
K5OT	TXM-SO-MIX	Central Texas DX & Contest Club	102779
WB5BKL	TX-SO-QRP	Central Texas DX & Contest Club	70944
K8LS	TX-SO-CWO	Central Texas DX & Contest Club	44159
W2MN	TX-SO-MIX	Central Texas DX & Contest Club	32390
N9OF	TX-SO-CWO	Central Texas DX & Contest Club	21724
N5DO	TX-SO-MIX	Central Texas DX & Contest Club	12570
W5XD	TX-SO-MIX	Central Texas DX & Contest Club	10575
AC5AA	TX-SO-CWO	Central Texas DX & Contest Club	8920
N5AW	TX-SO-CWO	Central Texas DX & Contest Club	8880
Club Total			2234512

Texas QSO Party - 2017

Call	Category	Club	Final Score
N5NA	TXM-SO-CWO	Midland ARC	563440
N5RZ	TX-SO-CWO	Midland ARC	194136
W5WRL	TXM-MO	Midland ARC	133200
W5LXS	TX-SO-CWO	Midland ARC	74441
K9ING	TX-SO-PHO	Midland ARC	6072
Club Total			971289

Call	Category	Club	Final Score
W5JNP	TX-SO-PHO	DFW Contest Group	100920
WM5Q	TX-SO-PHO	DFW Contest Group	98268
W1JCW	TXM-SO-PHO	DFW Contest Group	84346
K5AX	TX-SO-CWO	DFW Contest Group	65474
W5MT	TX-SO-CWO	DFW Contest Group	54866
W0VX	TX-SO-CWO	DFW Contest Group	45625
K5FO	TX-SO-MIX	DFW Contest Group	41916
WA8ZBT	TX-SO-CWO	DFW Contest Group	37830
K5LOL	TXM-MO	DFW Contest Group	26940
K5WL	TX-SO-MIX	DFW Contest Group	21900
W8FN	TX-SO-CWO	DFW Contest Group	7740
Club Total			585825

Call	Category	Club	Final Score
AD5WB	TX-SO-PHO	Texas DX Society	109174
K15LR	TX-SO-MIX	Texas DX Society	106080
K0YY	TX-SO-MIX	Texas DX Society	84975
AJ4F	TX-SO-CWO	Texas DX Society	82438
K5TIA	TXM-SO-CWO	Texas DX Society	23272
N5KWD	TX-SO-PHO	Texas DX Society	13068
K0NM	TX-SO-MIX	Texas DX Society	8856
Club Total			427863

Call	Category	Club	Final Score
W5RTA	TX-MO	South Texas DX & Contest Club	260020
W5QLF	TX-SO-CWO	South Texas DX & Contest Club	34512
W2IK	TXM-SO-PHO	South Texas DX & Contest Club	20592
N5VYS	TX-SO-PHO	South Texas DX & Contest Club	17136
AB5XZ	TX-SO-PHO	South Texas DX & Contest Club	2788
Club Total			335048

Texas QSO Party - 2017

Call	Category	Club	Final Score
W5MF	TX-SO-MIX	Northwest ARS	100288
K5GQ	TXM-SO-CWO	Northwest ARS	96245
N5BIA	TX-SO-PHO	Northwest ARS	312
NM5G	TX-SO-PHO	Northwest ARS	40

Club Total 196885

Call	Category	Club	Final Score
K5KJ	TX-SO-MIX	North Texas Contest Club	119680

Club Total 119680

Call	Category	Club	Final Score
K5IZO	TX-SO-MIX	Brazos Valley ARC	79635
KD5FBA	TX-SO-PHO	Brazos Valley ARC	4000
W5TKZ	TX-SO-PHO	Brazos Valley ARC	1008

Club Total 84643

Call	Category	Club	Final Score
W5NAC	TX-SO-MIX	Nacogdoches ARC	82476
WD5RAH	TX-SO-PHO	Nacogdoches ARC	1456

Club Total 83932

Call	Category	Club	Final Score
NA5YO	TX-SO-CWO	Port Lavaca ARC	32132
K5SBR	TX-SO-CWO	Port Lavaca ARC	23702

Club Total 55834

Call	Category	Club	Final Score
WB8LBZ	TX-SO-PHO	Sun City ARC	18400
WB5LJO	TXM-SO-PHO	Sun City ARC	1624
K5WPH	TXM-SO-PHO	Sun City ARC	494

Club Total 20518

Call	Category	Club	Final Score
WD5ILB	TX-SO-CWO	Tri-County ARC	11484
WC5C	TX-SO-PHO	Tri-County ARC	7800

Club Total 19284

Texas QSO Party - 2017

Call	Category	Club	Final Score
KG5LRP	TX-SO-MIX	Houston SHOT	17600
Club Total			17600

Call	Category	Club	Final Score
K5TYR	TX-MO	Tyler ARC	2256
Club Total			2256

Call	Category	Club	Final Score
W5AC	TX-SO-PHO	Texas A&M ARC	2160
Club Total			2160

Call	Category	Club	Final Score
KB60JE	TX-SO-PHO	Southwest Dallas County ARC	220
Club Total			220

Some Statistics from the TQP Logs

It's good to capture some statistics from the submitted logs in order to assess how the QSO party is going – up/down/sideways. Here are some statistics from the 2017 TQP including information on the level of participation, county activity, bands and modes used, etc.

Logs Received – In 2017 we received 260 logs with 145 being from outside the state and 115 from inside. The 260 logs represent an increase from the 215 received in 2016 with 120 from outside the state and 95 from inside so there was a modest increase in logs from both inside and outside the state in 2017. Every year a significant number of stations take part in the party, as evidenced by their calls being in a number of submitted logs, but, for one reason or another, fail to submit a log. A by-product of the log processing is a Received Stations Report which lists the number of logs in which each station appears and the number of QSOs represented. The following data pulled from this report gives an indication of additional logs that could have been received but were not.

QSOs in Rcvd Logs	Number of No Log Stations
150	2
100	4
75	10
50	28
25	57
10	271

In this table the first column is a number of QSOs in submitted logs where a station is listed as the received station. The second column is the number of stations that did not submit a log but where the

Texas QSO Party - 2017

number of reported QSOs with that station is greater than or equal to the number in the first column. So, for example, there were 4 stations that were reported in more than 100 QSOs in the submitted logs but did not submit a log. There were 57 stations that were reported in more than 25 QSOs in the submitted logs but did not submit a log. So, taking the 25 QSO level as a threshold for submitting a log, the total logs received could have been $260 + 57 = 317$. An important question along these lines is why many stations fail to submit a log, especially the 28 or so that were reported to have made 50 or more QSOs, and what can be done to increase the number of submissions from this group. Submitting a log is a lot like sending a thank you card to someone who has hosted a party you've attended – it's the courteous thing to do. And besides it may provide incentive for the host to give the party again. So if you are reading this and you are one of the group of "made significant number of QSOs but did not send a thank you note with log attached" please consider filing a log after the next TQP.

Band Statistics: The 40m and 20m bands continue to be the primary bands for the party. Here's how the break down went in 2017 versus 2016. It's interesting to note the flip-flop between 40 and 20 and the increase in 80m QSOs. It's a reflection of the changing band conditions. No surprises on the other bands.

Band	Percent of QSOs on Band	
	2017	2016
160	<1	<1
80	2	~1
40	50	36
20	47	63
15	<1	<1
10	<1	<1

Mode Statistics: CW continues to be the most popular mode, perhaps due to the large number of QSOs made by mobiles and the fact that CW is the easier mode from a mobile. The breakdown in 2017 was 56% CW and 44% SSB which is approximately the same as in 2016 (60% CW and 40% SSB). There was also a very small number (<1%) of RTTY QSOs that are embedded in the CW QSOs.

Butt-in-Chair Stations – These are the stations that were active in every hour of the party by virtue of the fact that they made at least one contact in each hour, but of course in many cases, it was much more than one QSO in each hour. We certainly appreciate these operators, and their chairs, for the support they show for the TQP.

- **Mobile:** N5NA, W5CT
- **Texas Fixed:** AD5WB, AE5GT, K5IZO, K5LLA, KI4LP, N5IT, NU5DE, W4WJ, W5RTA, WA2VYA, WB5BKL, WB8LBZ
- **Out-of-state:** K0HNC, N6MU, NY9P, VE3KZ, W7GF, WA6KHK, WB9CIF

Then there were a few who missed BIC status by only one hour

- **Mobile:** WA5DSS

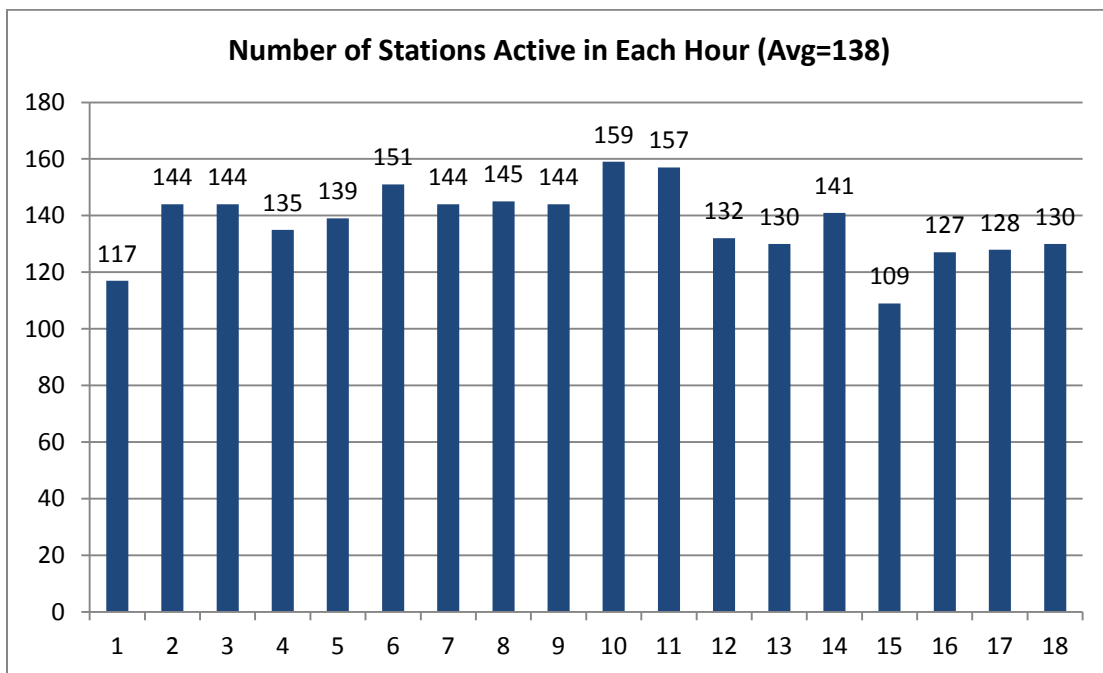
Texas QSO Party - 2017

- **Texas Fixed:** AJ4F, KI5LR, N5RZ, W5LXS
- **Out-of-state:** KOAP, K3TW, K5UV, WA0LIF

And finally a few who missed BIC status by only two hours

- **Texas Fixed:** AC4CA, K5IX, K5SBR, KJ5MA, N5AJD, N5XTR, W2MN, W5FMH, W5NAC, WM5Q
- **Out-of-state:** K4BAI, KE0TT, N8II, VE5SDH, W5TM

Activity Levels – Here are some charts showing the level of activity from several different viewpoints. The first chart shows the number of active stations in each hour, for stations that submitted a log. In the chart below the hour labeled 1 is hour beginning 1400z on the first session, the hour labeled 12 is hour beginning 0100z on the first session, and hour labeled 13 is the hour beginning 1400z on the second session (beginning of the second session). As is typical of many QSO parties the first hour is one of the slowest and activity builds during the day reaching a peak around 2300z and drops off in the last hour of the first session. The average number of stations active during the 18 hours of the party was 138. The average number of stations active during the first session was 143 and during the second session 128.

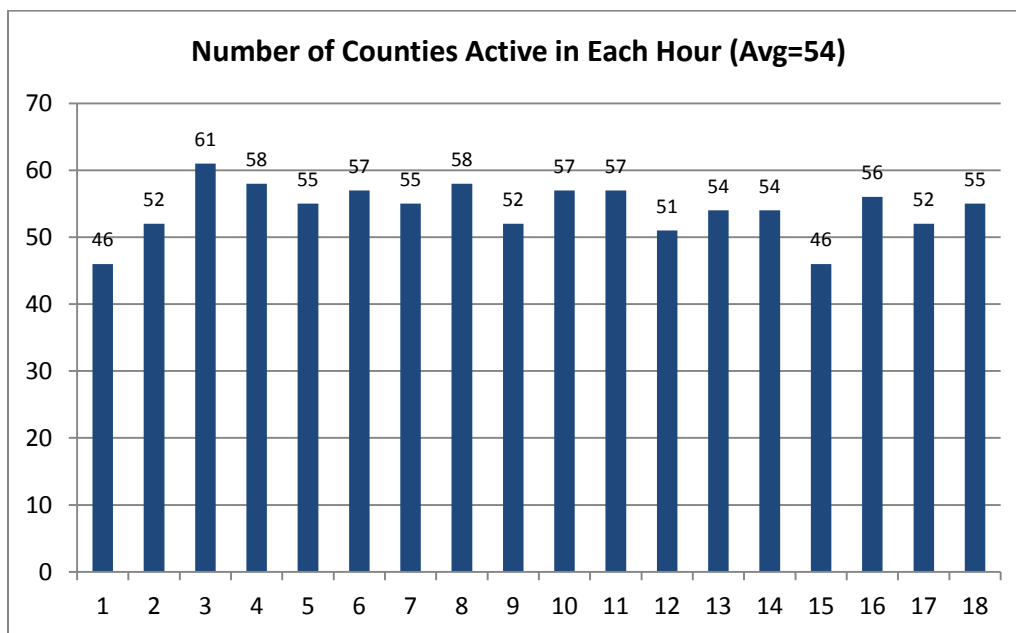


County Activity – The ten most active counties in terms of total number of QSOs are shown in this table. All but two of the top ten were on the air all 18 hours of the party. It's interesting to note, if you sum the CWQ and PHQ columns, that for the 10 most active counties the preferred mode was Phone (CWQ=41% and PHQ=59%) which is opposite the mode-split for the overall party which was CWQ=56% and PHQ=44%. This is probably due to the fact that only one of the CWO mobiles visited only 7 of the top ten most active counties.

Texas QSO Party - 2017

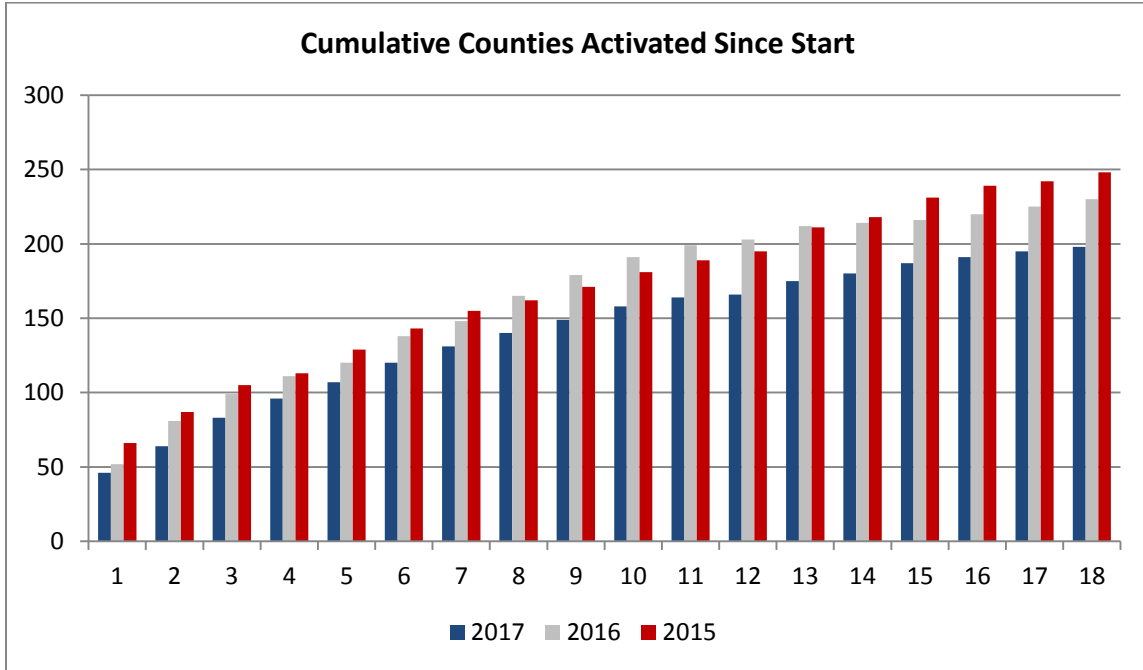
County	Stations	CWQ	PHQ	TotalQ	HOURS
Bastrop	3	379	1544	1923	18
Williamson	6	429	1214	1643	18
Harris	10	521	949	1470	18
Gillespie	5	1434	7	1441	18
Galveston	4	530	498	1028	18
Bandera	2	0	955	955	18
Travis	4	346	508	854	18
Brazoria	2	130	656	786	17
Dallas	5	643	132	775	16
Denton	7	300	388	688	18

Overall County Activity – The following series of charts shows the activity from an overall QSO party “counties on the air” perspective. The first chart shows number of counties active in each hour and the second chart the cumulative number of different counties activated since the start of the party.



The following chart shows the cumulative number of different counties activated since the start of the party, comparing the results to those of 2016 and 2015. The final value for 2015 was 248, for 2016 was 230 and for 2017 was 207. The total number of counties in Texas is 254.

Texas QSO Party - 2017

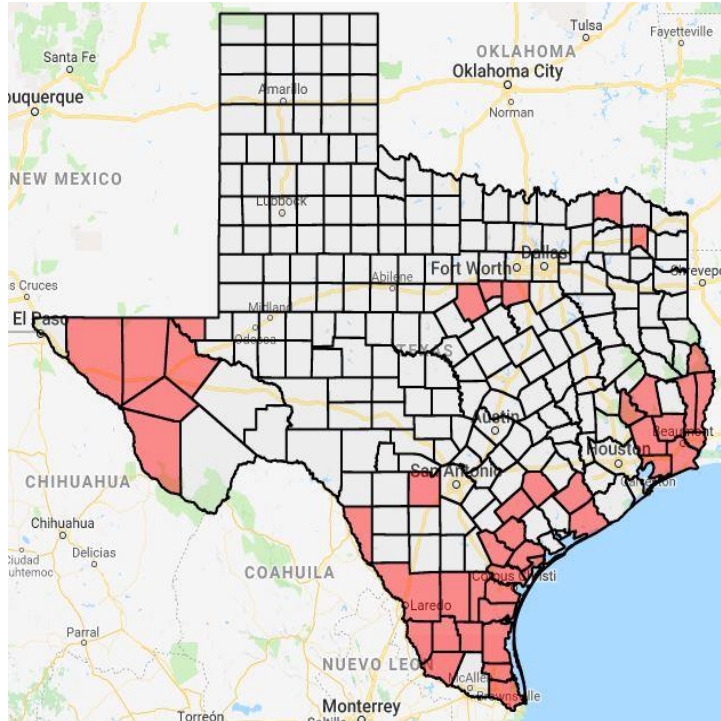


It is interesting to see where the loss of activated counties occurred. The table and map below shows the counties that were inactive in 2017. The counties shown with * were apparently active by virtue as being the received county in multiple logs but for which a log was not received. These counties have been removed from the inactive counties shown on the map below. As one would expect a large number of the inactive counties are located in the coastal bend region as can be seen graphically from the map.

Inactive Counties - 2017

Aransas	Hood	Liberty	Sabine
Bee	Hudspeth	Loving	San Jacinto
Brooks	Jasper	Matagorda	San Patricio
Cameron	Jeff Davis	Maverick	Starr
Chambers	Jefferson	Medina	Titus
Culberson	Jim Hogg	Newton	Val Verde*
Dewitt	Jim Wells	Nueces	Webb
Duval	Johnson	Orange	Wharton
Erath	Kenedy	Polk	Willacy
Goliad	Kleberg	Presidio	Wood*
Hardin	Lamar	Reeves	Zapata
Hidalgo*	Lavaca	Refugio	

Texas QSO Party - 2017

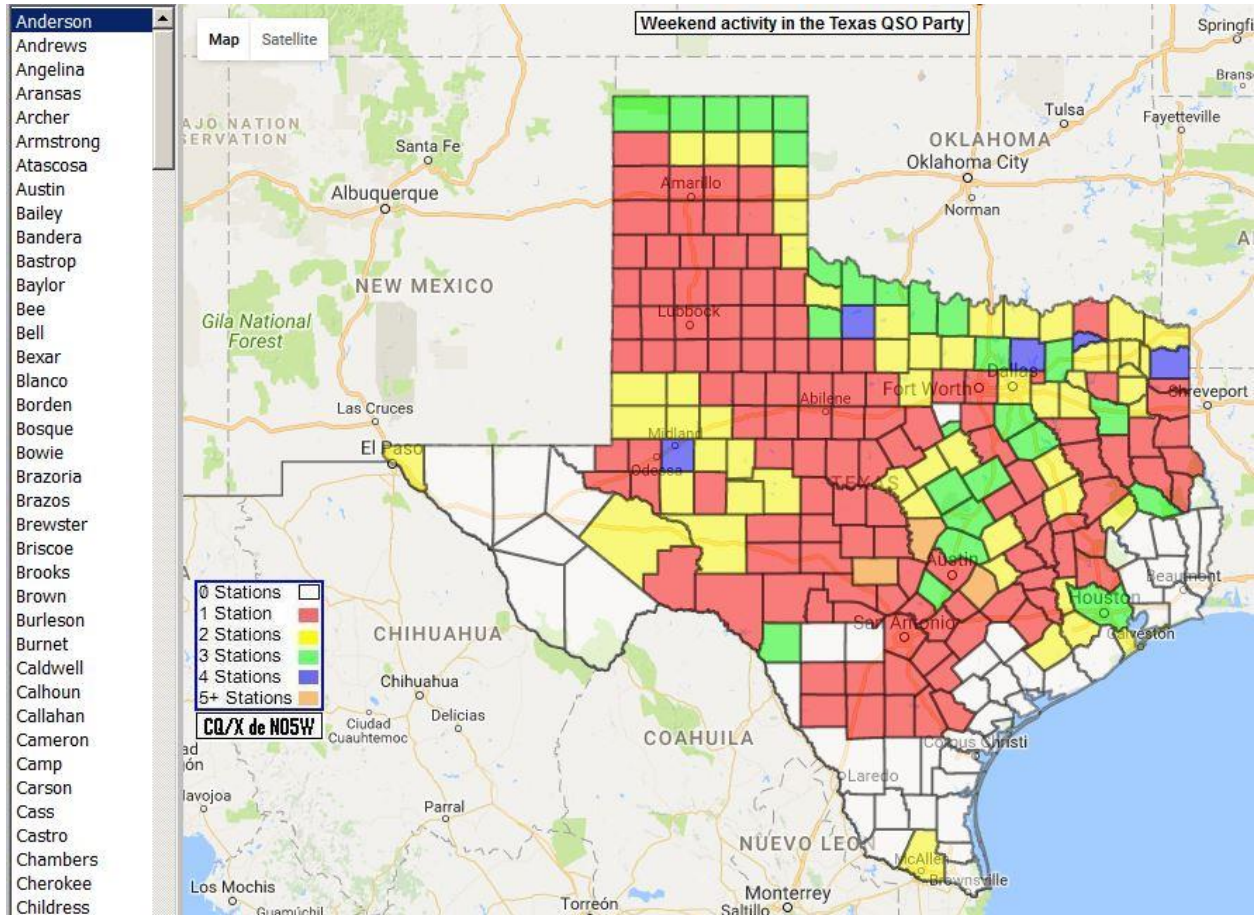


Map showing the counties that were inactive in 2017

Click [here](#) for a live web version of the map

County Coverage and Coordination – While the above chart indicates where we fell short again from our yearly goal of activating all 254 counties it still represents a significant achievement. With 254 counties to activate and with more than a few of those counties containing no active HF operators mobile operation becomes an important part of the strategy for activating all the counties. And with a limited number of mobiles an important part of the strategy is coordinating (another term for pleading, begging, cajoling, and arm-twisting) to the extent possible, who will go where. For this we make use of Google Maps to publish known plans in the last month or so during the run-up to the party. Mobiles are requested to consult maps of the following type, accessible from the TQP website, when making their plans and to see if perhaps a small tweak in their planned route could help activate an additional county or two. As indicated on the legend counties colored red are those that have only one station planning to operate from there and that the counties colored white have no announced plans for activation.

Texas QSO Party - 2017



Map Showing Planned Activity in the 2017 TQP

Click [here](#) for a live web version of the map

Comparing the planned activity to the inactive counties map you can see that the plan was worked quite well in that we followed the plan to put the planned counties on the air. The only counties that were planned to be active but were not were: Bee, Erath, Lamar, Titus, Webb, and Wharton.

The Log Checking Process – Finally, here is a brief overview of the log checking process. If your score published in the score listings isn't exactly what you thought it should be here is where you may have lost some QSOs and in some cases a multiplier or two.

1. Each received log is reviewed for proper format and where necessary converted to a standard Cabrillo format and imported into a SQL database (MySQL).
2. A PHP script is run against the database with the goal of matching up QSOs from each log with corresponding QSOs from the other log. Matching is done on the basis of Band, Mode, Call, Sent QTH, and Received QTH. The output of this script is a set of three files for each submitted entry
 - a. **Verified log file** - this is a file containing all of the QSOs for which a matching QSO was found in the other submitted log and it is the file that will eventually be scored after the review of the following two files is complete.
 - b. **NIL file** – this is a file containing those QSOs for which a matching QSO was not found in the other submitted logs

Texas QSO Party - 2017

c. **Uniques file** – this is a file containing all of the QSOs with stations that did not submit a log and whose call does not appear in any other submitted logs

3. Using software-assisted manual review (there is software to help but a person is also involved), each QSO in the NIL file for each entry is reviewed to determine why no matching QSO was found. If it is determined that the failure to find a match was due to a logging error by the other station the QSO is put back into the Verified log file for the current log being reviewed. Otherwise the QSO is held out.

4. Using software-assisted manual review each QSO in the Uniques file for each entry is reviewed to determine if the call logged is a busted version of a call from a station that submitted a log. If it is not determined to be a busted call then the QSO is put back into the Verified log file.

5. Upon completion of the above steps for all of the submitted logs an automated process is run to score all of the Verified Log Files.

Note: You may request a copy of the above three files and the resulting analysis for your entry by sending an email to no5w.chuck@gmail.com.

Some Common Logging Problems – Here are some common score-reducing problems to avoid

1. Failure to use the correct abbreviation when logging a Texas county or a US state. Examples here would be logging JACK when working someone in Jackson (JKSN) County, logging COMA when working someone in Comal (COML), logging MONT when working someone in Montgomery (MGMY). There is a JACK County whose abbreviation is JACK, COMA is the abbreviation for Comanche County, and MONT is the abbreviation for Montague County.
2. Sending the wrong abbreviation for a county you are in. Prime examples are sending MONT when you are in Montgomery (MGMY), and sending COMA when you are in Comal (COML). Please review the list of county abbreviations prior to the party.
3. Failure to check that your logging program has correctly recorded your sent information. A prime example here is Texas users of N1MM failing to note that the program logged the sent QTH as TX or TEXAS rather than the county that you actually sent. This usually does not result in loss of points since logs having this problem are returned to sender for correction. But it creates additional work for the log checkers – not a good thing.
4. Failure to log the correct QTH when working a DX station. Texas stations receive multiplier credit for each DX entity worked so contacts with DX stations should be logged with the primary prefix of the DX entity. For example DX is not a valid QTH when working DL3DXX but DL is; similarly if you work SP9LJD the correct QTH to log is SP.
5. Failure to log the correct band or mode on which the QSO took place. Since it is not possible to conclusively determine which of the two stations caused the mismatch these QSOs are put back. However, it could still result in loss of points for example if you work a station on 40m and 80m but log both of the QSOs as having taken place on 40 then you will only get credit for one of the QSOs since the other one is a dupe due to the logging error. These problems are easily avoided by interfacing your radio and logging program.
6. When submitting your log be sure to include your call and your category in the subject line of the email. In case it is necessary to review the email submission of NO5XYZ during the log checking process it is a lot easier to find the email submitted by NO5XYZ than it is to find the email of Joe Ham who happens to be NO5XYZ. Including your category is particularly important for QRP

Texas QSO Party - 2017

operators since it is not possible to determine, just from the log entries, whether a station was QRP or not.

7. Finally be sure that your logging program has your call correct. That's right, your call. One operator who has an "oh" in his call (not NO5W!) typed a zero instead so his call in the log file name as well as in the log itself came out KA60YZ and it took a choir of log checkers a good half hour to figure out why that operators log was not showing up in the results – not a good thing.

Conclusion – During this report we have pointed out several times that activity levels were not as high in 2017 as they have been in the past. This, of course, can be partly due to the Sun creating poor conditions not conducive to great participation. We can't do much about the Sun and probably should plan on several more years of poor conditions as we go through the trough of the sunspot cycle. We can, however, do something about creating more interest in the party, and it must start with Texas operators since we are the focus of the party. If you enjoy the TQP you should get out and do some recruiting on your own. Talk it up at your club, at any ham fest you attend, etc. The TQP can always use more mobiles and mobile operation can be a lot of fun as you motor around the state and as you cross into each new county working down the pileup. So consider going mobile in the future, preferably with a driver/co-operator.

So that's the 2017 Texas QSO Party story and we're sticking to it. However, if you find any errors, like having you in the wrong club or category drop us an email at our QRZ address and we will review and make any valid corrections. Thanks to all who took the time to participate in the 2017 Texas QSO Party, hope to hear you again in 2018.

73/Chuck/NO5W

Revision History

Rev 0.0: Original draft – January 28, 2018

Rev 1.0: Revision – February 28, 2018.

1. Revised to add the lost paper log of W2IK.
2. Fixed a broken link on the Inactive Counties Map

Rev 2.0: Revision – March 20, 2018.

1. Corrected “**2016 Top Three Scores in TXM-MO**” to “**2016 Top Three Scores in TX-MO**” on page 16
2. Added operator list to the TX-MO and TXM-MO categories

Rev 3.0: Revision –June 26, 2018.

1. Corrected operators listed for NU5DE.