

Revision 3.0  
July 27, 2019



# Texas QSO Party 2018 Results

Prepared by:  
Chuck – NO5W

# Texas QSO Party - 2018

---

## Introduction

This report summarizes the results of the 2018 Texas QSO Party including individual scores in each category and a comparison to the top scores in 2016-17, Texas club aggregate scores, analysis of the participation levels, and a summary of the county activity. Also included is a brief description of the log checking process along with some comments on frequently occurring logging errors for future reference. Each log submitted, from the largest down to the smallest is checked in detail for accuracy to the extent made possible given the logs that are received. If you would like to receive a copy of the log checking files from the review of your log please contact NO5W at his QRZ address.

In the following tables Score\* is the score before applying any bonus whereas Final Score includes the bonus. The following two types of bonus points are available in the TQP.

- **Mobile County Activation Bonus** – Each county from which a mobile makes five or more contacts earns the mobile a bonus of 1000 points.
- **Mobile Tracking Bonus** – For any station, fixed or mobile, a bonus of 500 points is awarded for each group of five different counties that the station has a QSO with a given mobile.

## US-Canada (Non-Texas) Individual Player Scores

**Non-Texas Single Op CW Only Category** - The NTX-SO-CWO category continues to be a popular one with sixty-nine entries making 3722 contacts in 2018 for an average of about 54 contacts whereas in 2017 this category made 3185 contacts for an average of about 60 QSOs per entry. We had more logs in this category in 2018 than we did in 2017 but contacts were apparently more difficult to make. It's interesting to note that two of the top three scores in this category were made by two of the same top three operators as in 2016 and 2017 and also interesting to compare their results in 2018 to those of 2017 and 2016.

### 2016 Top Three Scores in NTX-SO-CWO

| Call   | Category   | CWQs | QsoPts | Mults | Score* | Bonus | Final Score |
|--------|------------|------|--------|-------|--------|-------|-------------|
| N6MU   | NTX-SO-CWO | 294  | 882    | 186   | 164052 | 18000 | 182052      |
| VE3KZ  | NTX-SO-CWO | 268  | 804    | 165   | 132660 | 15000 | 147660      |
| WB9CIF | NTX-SO-CWO | 223  | 669    | 151   | 101019 | 14000 | 115019      |

### 2017 Top Three Scores in NTX-SO-CWO

| Call   | Category   | CWQs | QSO Points | Mults | Score* | Bonus | Total Score |
|--------|------------|------|------------|-------|--------|-------|-------------|
| N6MU   | NTX-SO-CWO | 229  | 687        | 143   | 98241  | 13500 | 111741      |
| VE3KZ  | NTX-SO-CWO | 215  | 645        | 120   | 77400  | 9500  | 86900       |
| WB9CIF | NTX-SO-CWO | 201  | 603        | 119   | 71757  | 9000  | 80757       |

### 2018 Top Three Scores in NTX-SO-CWO

| Call   | Category   | CWQs | QSO Points | Mults | Score* | Bonus | Total Score |
|--------|------------|------|------------|-------|--------|-------|-------------|
| K2DSW  | NTX-SO-CWO | 228  | 684        | 149   | 101916 | 11000 | 112916      |
| N6MU   | NTX-SO-CWO | 227  | 681        | 138   | 93978  | 12000 | 105978      |
| WB9CIF | NTX-SO-CWO | 218  | 654        | 140   | 91560  | 11500 | 103060      |

## Texas QSO Party - 2018

---

In 2018 there were 177 county multipliers available to non-Texas stations working the CW Only mode. If you operate contests often you already know that "mults-rule" and this is certainly illustrated by the shootout between K2DSW and N6MU whose number of contacts differed by only a single QSO but a significant difference in scores resulted from K2DSW being a bit more successful in hunting down the multipliers. Congratulations to Bob-K2DSW who took over as the new top dog in this category by capturing 84% of the multipliers available to the Non-Texas CW Only category.

Looking at the nine positions in the top three in this category over the past three years you can see that two-thirds of those positions have been claimed by John-N6MU and Mark-WB9CIF. Thank you both for the support of TQP over many years, including the most recent three. We look forward to your future participation and to close competitions in this category. Here are the scores of all the NTX-SO-CWO participants. Thanks to all for your participation and support of the TQP.

### All Scores 2018 Non-Texas Single Op CW Only Category

| Call   | Category   | CWQs | QSO Points | Mults | Score* | Bonus | Final Score |
|--------|------------|------|------------|-------|--------|-------|-------------|
| K2DSW  | NTX-SO-CWO | 228  | 684        | 149   | 101916 | 11000 | 112916      |
| N6MU   | NTX-SO-CWO | 227  | 681        | 138   | 93978  | 12000 | 105978      |
| WB9CIF | NTX-SO-CWO | 218  | 654        | 140   | 91560  | 11500 | 103060      |
| W5TM   | NTX-SO-CWO | 185  | 555        | 123   | 68265  | 9000  | 77265       |
| K0AP   | NTX-SO-CWO | 130  | 390        | 123   | 47970  | 10500 | 58470       |
| K2ZR   | NTX-SO-CWO | 166  | 498        | 91    | 45318  | 5500  | 50818       |
| VE3NNT | NTX-SO-CWO | 148  | 444        | 75    | 33300  | 3500  | 36800       |
| VE3KP  | NTX-SO-CWO | 117  | 351        | 83    | 29133  | 3500  | 32633       |
| N4OX   | NTX-SO-CWO | 108  | 324        | 74    | 23976  | 5000  | 28976       |
| K9GDF  | NTX-SO-CWO | 106  | 328        | 71    | 23288  | 3500  | 26788       |
| VE3AQ  | NTX-SO-CWO | 105  | 315        | 67    | 21105  | 3000  | 24105       |
| K8JQ   | NTX-SO-CWO | 111  | 333        | 62    | 20646  | 2000  | 22646       |
| KE0TT  | NTX-SO-CWO | 94   | 282        | 62    | 17484  | 3000  | 20484       |
| W4XK   | NTX-SO-CWO | 91   | 273        | 58    | 15834  | 2000  | 17834       |
| W7GF   | NTX-SO-CWO | 78   | 234        | 63    | 14742  | 3000  | 17742       |
| W0UY   | NTX-SO-CWO | 75   | 225        | 55    | 12375  | 2500  | 14875       |
| K4ZGB  | NTX-SO-CWO | 69   | 207        | 57    | 11799  | 2000  | 13799       |
| NJ4Q   | NTX-SO-CWO | 74   | 222        | 53    | 11766  | 1500  | 13266       |
| K4AMC  | NTX-SO-CWO | 68   | 204        | 50    | 10200  | 2000  | 12200       |
| NO5W   | NTX-SO-CWO | 69   | 207        | 49    | 10143  | 2000  | 12143       |
| KN4Y   | NTX-SO-CWO | 63   | 189        | 49    | 9261   | 1500  | 10761       |
| NY9P   | NTX-SO-CWO | 57   | 171        | 47    | 8037   | 2500  | 10537       |
| N3GD   | NTX-SO-CWO | 61   | 183        | 46    | 8418   | 1500  | 9918        |
| W2CVW  | NTX-SO-CWO | 62   | 186        | 43    | 7998   | 1500  | 9498        |
| W4EE   | NTX-SO-CWO | 59   | 177        | 46    | 8142   | 1000  | 9142        |
| K6AR   | NTX-SO-CWO | 58   | 174        | 40    | 6960   | 1000  | 7960        |
| K1IB   | NTX-SO-CWO | 65   | 195        | 40    | 7800   | 0     | 7800        |

## Texas QSO Party - 2018

|        |            |    |     |    |      |      |      |
|--------|------------|----|-----|----|------|------|------|
| N8AA   | NTX-SO-CWO | 50 | 150 | 35 | 5250 | 500  | 5750 |
| K6TET  | NTX-SO-CWO | 42 | 126 | 38 | 4788 | 500  | 5288 |
| N5MT   | NTX-SO-CWO | 33 | 99  | 30 | 2970 | 1500 | 4470 |
| K4ORD  | NTX-SO-CWO | 41 | 123 | 30 | 3690 | 0    | 3690 |
| WA3AAN | NTX-SO-CWO | 40 | 120 | 25 | 3000 | 0    | 3000 |
| KF3G   | NTX-SO-CWO | 29 | 87  | 25 | 2175 | 500  | 2675 |
| AG6V   | NTX-SO-CWO | 29 | 87  | 27 | 2349 | 0    | 2349 |
| N4VV   | NTX-SO-CWO | 32 | 96  | 24 | 2304 | 0    | 2304 |
| AA8TA  | NTX-SO-CWO | 28 | 84  | 21 | 1764 | 500  | 2264 |
| K4JAZ  | NTX-SO-CWO | 31 | 93  | 24 | 2232 | 0    | 2232 |
| N5UL   | NTX-SO-CWO | 31 | 93  | 24 | 2232 | 0    | 2232 |
| WA8KBU | NTX-SO-CWO | 32 | 96  | 23 | 2208 | 0    | 2208 |
| N5PHT  | NTX-SO-CWO | 29 | 87  | 24 | 2088 | 0    | 2088 |
| NW0M   | NTX-SO-CWO | 25 | 75  | 22 | 1650 | 0    | 1650 |
| K6CSL  | NTX-SO-CWO | 24 | 72  | 22 | 1584 | 0    | 1584 |
| AF5CC  | NTX-SO-CWO | 23 | 69  | 18 | 1242 | 0    | 1242 |
| KF9VV  | NTX-SO-CWO | 23 | 69  | 18 | 1242 | 0    | 1242 |
| K9OZ   | NTX-SO-CWO | 22 | 66  | 18 | 1188 | 0    | 1188 |
| K9NW   | NTX-SO-CWO | 16 | 48  | 12 | 576  | 500  | 1076 |
| W1END  | NTX-SO-CWO | 21 | 63  | 15 | 945  | 0    | 945  |
| KC7YE  | NTX-SO-CWO | 19 | 57  | 16 | 912  | 0    | 912  |
| NX4N   | NTX-SO-CWO | 19 | 57  | 14 | 798  | 0    | 798  |
| WA4TAS | NTX-SO-CWO | 18 | 54  | 14 | 756  | 0    | 756  |
| W4ZPR  | NTX-SO-CWO | 15 | 45  | 13 | 585  | 0    | 585  |
| W8IQ   | NTX-SO-CWO | 15 | 45  | 13 | 585  | 0    | 585  |
| N9OK   | NTX-SO-CWO | 15 | 45  | 12 | 540  | 0    | 540  |
| K9PG   | NTX-SO-CWO | 13 | 39  | 12 | 468  | 0    | 468  |
| N9WKE  | NTX-SO-CWO | 11 | 33  | 11 | 363  | 0    | 363  |
| KJ4AOM | NTX-SO-CWO | 12 | 36  | 10 | 360  | 0    | 360  |
| NU6N   | NTX-SO-CWO | 11 | 33  | 10 | 330  | 0    | 330  |
| VE7JH  | NTX-SO-CWO | 10 | 30  | 10 | 300  | 0    | 300  |
| AD6DM  | NTX-SO-CWO | 9  | 29  | 9  | 261  | 0    | 261  |
| N9HDE  | NTX-SO-CWO | 9  | 27  | 9  | 243  | 0    | 243  |
| K3JHT  | NTX-SO-CWO | 8  | 24  | 8  | 192  | 0    | 192  |
| WB9G   | NTX-SO-CWO | 8  | 24  | 8  | 192  | 0    | 192  |
| N1NN   | NTX-SO-CWO | 9  | 27  | 7  | 189  | 0    | 189  |
| N2UU   | NTX-SO-CWO | 7  | 21  | 7  | 147  | 0    | 147  |
| NZ1D   | NTX-SO-CWO | 7  | 21  | 7  | 147  | 0    | 147  |
| WQ6X   | NTX-SO-CWO | 6  | 18  | 6  | 108  | 0    | 108  |
| N8H    | NTX-SO-CWO | 5  | 15  | 5  | 75   | 0    | 75   |
| WA0LIF | NTX-SO-CWO | 2  | 6   | 2  | 12   | 0    | 12   |
| N5ZO   | NTX-SO-CWO | 1  | 3   | 1  | 3    | 0    | 3    |

## Texas QSO Party - 2018

---

**Non-Texas Single Op Phone Only Category** – This category continues to draw participation from outside of Texas in spite of the fact that scores in NTX-SO-PHO are limited somewhat by the smaller number of stations operating phone from within Texas than for the NTX-SO-CWO with only 53 stations to work and only 97 of the counties available on phone from Phone Only and Mixed Mode stations. The significant difference in mults and bonus points between the NTX-SO-PHO and NTX-SO-CWO is also a reflection of the fact that many of the high-scoring mobiles tend to work CW only.

### 2016 Top Three Scores in NTX-SO-PHO

| Call  | Category   | PHQs | QsoPts | Mults | Score* | Bonus | Final Score |
|-------|------------|------|--------|-------|--------|-------|-------------|
| W6AFA | NTX-SO-PHO | 269  | 538    | 115   | 61870  | 4500  | 66370       |
| AC0CU | NTX-SO-PHO | 52   | 104    | 47    | 4888   | 2000  | 6888        |
| K5ZZR | NTX-SO-PHO | 60   | 120    | 45    | 5400   | 500   | 5900        |

### 2017 Top Three Scores in NTX-SO-PHO

| Call   | Category   | PHQs | QsoPts | Mults | Score* | Bonus | Final Score |
|--------|------------|------|--------|-------|--------|-------|-------------|
| N5XTR  | NTX-SO-PHO | 99   | 198    | 67    | 13266  | 1500  | 14766       |
| W6AFA  | NTX-SO-PHO | 104  | 208    | 59    | 12272  | 500   | 12772       |
| KD5ILA | NTX-SO-PHO | 87   | 174    | 54    | 9396   | 0     | 9396        |

### 2018 Top Three Scores in NTX-SO-PHO

| Call  | Category   | PHQs | QsoPts | Mults | Score* | Bonus | Final Score |
|-------|------------|------|--------|-------|--------|-------|-------------|
| W6AFA | NTX-SO-PHO | 181  | 362    | 81    | 29322  | 500   | 29822       |
| KK7AC | NTX-SO-PHO | 104  | 208    | 76    | 15808  | 3500  | 19308       |
| N7MZW | NTX-SO-PHO | 43   | 86     | 32    | 2752   | 500   | 3252        |

Here are all of the scores for the NTX-SO-PHO category. Congratulations to the top scoring operators and thanks to all operators for your participation and support of the TQP.

### All Scores 2018 Non-Texas Single Op Phone Only Category

| Call   | Category   | PHQs | QsoPts | Mults | Score* | Bonus | Final Score |
|--------|------------|------|--------|-------|--------|-------|-------------|
| W6AFA  | NTX-SO-PHO | 181  | 362    | 81    | 29322  | 500   | 29822       |
| KK7AC  | NTX-SO-PHO | 104  | 208    | 76    | 15808  | 3500  | 19308       |
| N7MZW  | NTX-SO-PHO | 43   | 86     | 32    | 2752   | 500   | 3252        |
| WA1SAY | NTX-SO-PHO | 39   | 78     | 29    | 2262   | 0     | 2262        |
| K7QDX  | NTX-SO-PHO | 32   | 64     | 26    | 1664   | 0     | 1664        |
| N1GTW  | NTX-SO-PHO | 19   | 38     | 17    | 646    | 0     | 646         |
| KM4IAJ | NTX-SO-PHO | 19   | 38     | 16    | 608    | 0     | 608         |
| K0RJW  | NTX-SO-PHO | 19   | 38     | 13    | 494    | 0     | 494         |
| WZ6ZZ  | NTX-SO-PHO | 15   | 30     | 15    | 450    | 0     | 450         |
| W7KAM  | NTX-SO-PHO | 15   | 30     | 13    | 390    | 0     | 390         |
| AK4VQ  | NTX-SO-PHO | 13   | 26     | 13    | 338    | 0     | 338         |
| N7ACI  | NTX-SO-PHO | 14   | 28     | 12    | 336    | 0     | 336         |
| K5DCX  | NTX-SO-PHO | 10   | 20     | 10    | 200    | 0     | 200         |
| KD2LUK | NTX-SO-PHO | 10   | 20     | 10    | 200    | 0     | 200         |
| W4MF   | NTX-SO-PHO | 10   | 20     | 9     | 180    | 0     | 180         |

## Texas QSO Party - 2018

---

|        |            |    |    |   |     |   |     |
|--------|------------|----|----|---|-----|---|-----|
| KN4EWI | NTX-SO-PHO | 10 | 20 | 8 | 160 | 0 | 160 |
| N5INV  | NTX-SO-PHO | 8  | 16 | 7 | 112 | 0 | 112 |
| KD4QMY | NTX-SO-PHO | 6  | 12 | 6 | 72  | 0 | 72  |
| K3JAG  | NTX-SO-PHO | 7  | 14 | 5 | 70  | 0 | 70  |
| AC9QM  | NTX-SO-PHO | 5  | 10 | 5 | 50  | 0 | 50  |
| AE6YB  | NTX-SO-PHO | 5  | 10 | 5 | 50  | 0 | 50  |
| KD9FSQ | NTX-SO-PHO | 5  | 10 | 5 | 50  | 0 | 50  |
| KH6VM  | NTX-SO-PHO | 5  | 10 | 5 | 50  | 0 | 50  |
| N3FNE  | NTX-SO-PHO | 5  | 10 | 5 | 50  | 0 | 50  |
| KD0JLE | NTX-SO-PHO | 4  | 8  | 4 | 32  | 0 | 32  |
| KG7DAB | NTX-SO-PHO | 4  | 8  | 4 | 32  | 0 | 32  |
| K9WPV  | NTX-SO-PHO | 3  | 6  | 3 | 18  | 0 | 18  |
| AB1ZQ  | NTX-SO-PHO | 2  | 4  | 2 | 8   | 0 | 8   |
| K6BBQ  | NTX-SO-PHO | 2  | 4  | 2 | 8   | 0 | 8   |
| KF2UJ  | NTX-SO-PHO | 2  | 4  | 2 | 8   | 0 | 8   |
| AA6SF  | NTX-SO-PHO | 1  | 2  | 1 | 2   | 0 | 2   |
| VE2GT  | NTX-SO-PHO | 1  | 2  | 1 | 2   | 0 | 2   |

**Non-Texas Single Op Mixed Mode Category** – Top scores in this category have rebounded somewhat from the low point they reached in 2017 although they have not returned to 2016 levels. Non-Texas operators in this category had available 200 counties and 100 stations to work. Frank-WA6KHK, who seems to have a lock on the top NTX-SO-MIX spot, managed to capture 149 (75%) of the 200 counties available to this category and made almost as many CWQs as he did in 2016 but with a significant drop in his phone QSOs and some lost bonus points from 2016. Congratulations to Frank-WA6KHK for winning the NTX-SO-MIX category in three consecutive years.

### 2016 Top Three Scores in NTX-SO-MIX

| Call   | Category   | CWQs | PHQs | QsoPts | Mults | Score* | Bonus | Final Score |
|--------|------------|------|------|--------|-------|--------|-------|-------------|
| WA6KHK | NTX-SO-MIX | 191  | 282  | 1137   | 186   | 211482 | 15000 | 226482      |
| WB8WKQ | NTX-SO-MIX | 163  | 164  | 817    | 142   | 116014 | 7500  | 123514      |
| K4MM   | NTX-SO-MIX | 160  | 66   | 612    | 156   | 95472  | 12500 | 107972      |

### 2017 Top Three Scores in NTX-SO-MIX

| Call   | Category   | CWQs | PHQs | QsoPts | Mults | Score* | Bonus | Final Score |
|--------|------------|------|------|--------|-------|--------|-------|-------------|
| WA6KHK | NTX-SO-MIX | 140  | 196  | 812    | 124   | 100688 | 9000  | 109688      |
| N8II   | NTX-SO-MIX | 143  | 156  | 741    | 126   | 93366  | 6000  | 99366       |
| K4BAI  | NTX-SO-MIX | 163  | 52   | 593    | 110   | 65230  | 6000  | 71230       |

### 2018 Top Three Scores in NTX-SO-MIX

| Call   | Category   | CWQs | PHQs | QsoPts | Mults | Score* | Bonus | Final Score |
|--------|------------|------|------|--------|-------|--------|-------|-------------|
| WA6KHK | NTX-SO-MIX | 184  | 162  | 876    | 149   | 130524 | 10500 | 141024      |
| WB8WKQ | NTX-SO-MIX | 176  | 171  | 870    | 127   | 110490 | 7500  | 117990      |
| N4PN   | NTX-SO-MIX | 174  | 108  | 738    | 129   | 95202  | 7000  | 102202      |

## Texas QSO Party - 2018

---

Here are all of the scores in the NTX-SO-MIX category for 2018.

### All Scores 2018 Non-Texas Single Op Mixed Mode Category

| Call   | Category   | CWQs | PHQs | QsoPts | Mults | Score* | Bonus | Final Score |
|--------|------------|------|------|--------|-------|--------|-------|-------------|
| WA6KHK | NTX-SO-MIX | 184  | 162  | 876    | 149   | 130524 | 10500 | 141024      |
| WB8WKQ | NTX-SO-MIX | 176  | 171  | 870    | 127   | 110490 | 7500  | 117990      |
| N4PN   | NTX-SO-MIX | 174  | 108  | 738    | 129   | 95202  | 7000  | 102202      |
| K4BAI  | NTX-SO-MIX | 185  | 23   | 601    | 120   | 72120  | 7000  | 79120       |
| N8II   | NTX-SO-MIX | 115  | 97   | 539    | 94    | 50666  | 3500  | 54166       |
| K0HNC  | NTX-SO-MIX | 123  | 33   | 435    | 102   | 44370  | 7500  | 51870       |
| W8PI   | NTX-SO-MIX | 121  | 12   | 387    | 86    | 33282  | 4500  | 37782       |
| W9DC   | NTX-SO-MIX | 89   | 26   | 319    | 92    | 29348  | 5500  | 34848       |
| N4ARO  | NTX-SO-MIX | 103  | 7    | 323    | 69    | 22287  | 2500  | 24787       |
| K4XU   | NTX-SO-MIX | 103  | 23   | 355    | 62    | 22010  | 2500  | 24510       |
| VA2CZ  | NTX-SO-MIX | 66   | 49   | 296    | 62    | 18352  | 1000  | 19352       |
| VE3AYR | NTX-SO-MIX | 81   | 8    | 259    | 65    | 16835  | 2500  | 19335       |
| W5VS   | NTX-SO-MIX | 90   | 5    | 280    | 59    | 16520  | 2500  | 19020       |
| WD5CSK | NTX-SO-MIX | 64   | 7    | 206    | 66    | 13596  | 3500  | 17096       |
| W4KLY  | NTX-SO-MIX | 69   | 4    | 215    | 49    | 10535  | 1500  | 12035       |
| KE5XX  | NTX-SO-MIX | 74   | 3    | 228    | 50    | 11400  | 500   | 11900       |
| W9OA   | NTX-SO-MIX | 66   | 6    | 210    | 52    | 10920  | 500   | 11420       |
| NU1O   | NTX-SO-MIX | 34   | 44   | 190    | 54    | 10260  | 0     | 10260       |
| N3RJ   | NTX-SO-MIX | 40   | 20   | 160    | 48    | 7680   | 500   | 8180        |
| K4VBM  | NTX-SO-MIX | 42   | 12   | 150    | 42    | 6300   | 1500  | 7800        |
| NS2N   | NTX-SO-MIX | 50   | 4    | 158    | 44    | 6952   | 500   | 7452        |
| NS8O   | NTX-SO-MIX | 47   | 1    | 143    | 40    | 5720   | 500   | 6220        |
| WN4AFP | NTX-SO-MIX | 32   | 20   | 136    | 39    | 5304   | 500   | 5804        |
| KA5VZG | NTX-SO-MIX | 34   | 2    | 106    | 36    | 3816   | 1500  | 5316        |
| AC0RL  | NTX-SO-MIX | 30   | 15   | 120    | 38    | 4560   | 500   | 5060        |
| KA7T   | NTX-SO-MIX | 38   | 17   | 148    | 33    | 4884   | 0     | 4884        |
| K4AVX  | NTX-SO-MIX | 46   | 2    | 142    | 31    | 4402   | 0     | 4402        |
| KB0LF  | NTX-SO-MIX | 38   | 2    | 118    | 30    | 3540   | 500   | 4040        |
| W2UDT  | NTX-SO-MIX | 29   | 18   | 123    | 31    | 3813   | 0     | 3813        |
| W8KNO  | NTX-SO-MIX | 36   | 7    | 122    | 29    | 3538   | 0     | 3538        |
| WA7NWL | NTX-SO-MIX | 33   | 12   | 123    | 25    | 3075   | 0     | 3075        |
| W0BH   | NTX-SO-MIX | 29   | 5    | 97     | 25    | 2425   | 500   | 2925        |
| N0KOE  | NTX-SO-MIX | 18   | 13   | 80     | 26    | 2080   | 0     | 2080        |
| AB8OU  | NTX-SO-MIX | 20   | 12   | 84     | 23    | 1932   | 0     | 1932        |
| N3KN   | NTX-SO-MIX | 25   | 6    | 87     | 22    | 1914   | 0     | 1914        |
| KA3YGL | NTX-SO-MIX | 20   | 3    | 66     | 19    | 1254   | 0     | 1254        |
| N4ABI  | NTX-SO-MIX | 15   | 5    | 55     | 18    | 990    | 0     | 990         |
| NO2C   | NTX-SO-MIX | 12   | 6    | 48     | 16    | 768    | 0     | 768         |
| K1JB   | NTX-SO-MIX | 7    | 8    | 37     | 14    | 518    | 0     | 518         |
| N1SOH  | NTX-SO-MIX | 10   | 4    | 38     | 12    | 456    | 0     | 456         |

## Texas QSO Party - 2018

---

|        |            |    |   |    |    |     |   |     |
|--------|------------|----|---|----|----|-----|---|-----|
| WA5SOG | NTX-SO-MIX | 12 | 2 | 40 | 11 | 440 | 0 | 440 |
| WB7TJI | NTX-SO-MIX | 8  | 2 | 28 | 9  | 252 | 0 | 252 |
| K5LSU  | NTX-SO-MIX | 2  | 4 | 14 | 6  | 84  | 0 | 84  |

**Non-Texas Single Op QRP Category** – As is well-known conditions continue to be poor and nowhere is the lack of propagation felt more strongly than in the NTX-SO-QRP category leaving it again with entries for only two of the three top spots. One hopes that conditions will improve so that this category can once again attract a significant number of entries. However, if you follow the predictions of the sun spot and Maunder Minimum experts you will know that these poor conditions may be with us for some time to come. Many thanks go to Tom-K3TW for continuing to support this category with a score that represents a slight improvement over his 2017 effort and would have placed him among the top-ten finishers in the NTX-SO-MIX category.

### 2016 Top Three Scores in NTX-SO-QRP

| Call     | Category   | CWQs | PHQs | QsoPts | Mults | Score* | Bonus | Final Score |
|----------|------------|------|------|--------|-------|--------|-------|-------------|
| K3TW     | NTX-SO-QRP | 180  | 60   | 660    | 139   | 91740  | 10500 | 102240      |
| W4VG     | NTX-SO-QRP | 11   | 0    | 33     | 9     | 297    | 0     | 297         |
| No Entry | NTX-SO-QRP | -    | -    | -      | -     | -      | -     | -           |

### 2017 Top Three (ALL) Scores in NTX-SO-QRP

| Call  | Category   | CWQs | PHQs | QsoPts | Mults | Score* | Bonus | Final Score |
|-------|------------|------|------|--------|-------|--------|-------|-------------|
| K3TW  | NTX-SO-QRP | 93   | 21   | 321    | 68    | 21828  | 3000  | 24828       |
| W9WB  | NTX-SO-QRP | 33   | 22   | 143    | 38    | 5434   | 1000  | 6434        |
| W6GMT | NTX-SO-QRP | 17   | 0    | 51     | 14    | 714    | 0     | 714         |

### 2018 Top Three (ALL) Scores in NTX-SO-QRP

| Call     | Category   | CWQs | PHQs | QsoPts | Mults | Score* | Bonus | Final Score |
|----------|------------|------|------|--------|-------|--------|-------|-------------|
| K3TW     | NTX-SO-QRP | 103  | 6    | 321    | 75    | 24075  | 3500  | 27575       |
| AD0BI    | NTX-SO-QRP | 8    | 0    | 24     | 7     | 168    | 0     | 168         |
| No Entry | NTX-SO-QRP | -    | -    | -      | -     | -      | -     | -           |

**DX Single Op Category** - This category held steady in terms of number of logs with six but remained well below the 17 logs recorded in 2015. In spite of the poor conditions Dietmar-DL3DXX managed to find 105 of the available 177 counties with his 144 QSOs covering all but two of the 18 hours of the TQP, a distinction not frequently earned from Europe.

### 2016 Top Three Scores in DX-SO

| Call   | Category | CWQs | PHQs | QsoPts | Mults | Score* | Bonus | Final Score |
|--------|----------|------|------|--------|-------|--------|-------|-------------|
| DK2OY  | DX-SO    | 121  | 12   | 387    | 105   | 40635  | 7000  | 47635       |
| SP9LJD | DX-SO    | 98   | 7    | 308    | 78    | 24024  | 5500  | 29524       |
| DL6KVA | DX-SO    | 40   | 0    | 120    | 33    | 3960   | 500   | 4460        |

### 2017 Top Three Scores in DX-SO

| Call  | Category | CWQs | PHQs | QsoPts | Mults | Score* | Bonus | Final Score |
|-------|----------|------|------|--------|-------|--------|-------|-------------|
| DK2OY | DX-SO    | 66   | 6    | 210    | 56    | 11760  | 3000  | 14760       |
| HI8A  | DX-SO    | 71   | 0    | 213    | 48    | 10224  | 2000  | 12224       |



## Texas QSO Party - 2018

---

|        |       |    |   |    |    |     |   |     |
|--------|-------|----|---|----|----|-----|---|-----|
| SM5COP | DX-SO | 17 | 0 | 51 | 14 | 714 | 0 | 714 |
|--------|-------|----|---|----|----|-----|---|-----|

### 2018 Top Three Scores in DX-SO

| Call   | Category | CWQs | PHQs | QsoPts | Mults | Score* | Bonus | Final Score |
|--------|----------|------|------|--------|-------|--------|-------|-------------|
| DL3DXX | DX-SO    | 144  | 0    | 432    | 104   | 44928  | 6000  | 50928       |
| DK2OY  | DX-SO    | 48   | 4    | 152    | 43    | 6536   | 1000  | 7536        |
| DL8USA | DX-SO    | 41   | 0    | 123    | 37    | 4551   | 1500  | 6051        |

Here are all the scores in the DX-SO category.

### 2018 ALL Scores in DX-SO

| Call   | Category | CWQs | PHQs | QsoPts | Mults | Score* | Bonus | Final Score |
|--------|----------|------|------|--------|-------|--------|-------|-------------|
| DL3DXX | DX-SO    | 144  | 0    | 432    | 104   | 44928  | 6000  | 50928       |
| DK2OY  | DX-SO    | 48   | 4    | 152    | 43    | 6536   | 1000  | 7536        |
| DL8USA | DX-SO    | 41   | 0    | 123    | 37    | 4551   | 1500  | 6051        |
| HI8A   | DX-SO    | 24   | 0    | 72     | 17    | 1224   | 0     | 1224        |
| PA3ARM | DX-SO    | 8    | 0    | 24     | 8     | 192    | 0     | 192         |
| SM5COP | DX-SO    | 6    | 0    | 18     | 6     | 108    | 0     | 108         |

### Texas Individual Player Scores

**Texas Single Op CW Only Category** – The TX-SO-CWO category continues to be the most popular of the in-state categories with 40 entries in 2018 compared to 30 in 2017. Participants in this category logged an average of 159 QSOs. Multipliers seemed to be more difficult for this group in 2018 vs previous years with the average mults obtained by the top three being 113 vs 151 in 2017. The last three years have seen close competition between Clint-AE5GT and John-AC4CA for the top two spots. In 2018 AC4CA had the better QSO count but fell behind in finding the all-important multipliers. Scores for both were back to 2016 levels but lagged the level attained in 2017 which was a banner year for this category. This year saw a new entrant in the top three in this category with Nizor-KONNM moving into the third place slot. KONNM actually operated two stations during the party, one in Wharton County and the other in Duval County; both considered fixed stations and scored separately.

### 2016 Top Three Scores in TX-SO-CWO

| Call  | Category  | CWQs | QsoPts | Mults | Score* | Bonus | Final Score |
|-------|-----------|------|--------|-------|--------|-------|-------------|
| AC4CA | TX-SO-CWO | 499  | 1497   | 129   | 193113 | 2000  | 195113      |
| AE5GT | TX-SO-CWO | 369  | 1107   | 146   | 161622 | 6500  | 168122      |
| K5AX  | TX-SO-CWO | 276  | 828    | 109   | 90252  | 1500  | 91752       |

### 2017 Top Three Scores in TX-SO-CWO

| Call  | Category  | CWQs | QsoPts | Mults | Score* | Bonus | Final Score |
|-------|-----------|------|--------|-------|--------|-------|-------------|
| AE5GT | TX-SO-CWO | 483  | 1449   | 166   | 240534 | 6500  | 247034      |
| AC4CA | TX-SO-CWO | 498  | 1494   | 132   | 197208 | 3000  | 200208      |
| N5RZ  | TX-SO-CWO | 402  | 1206   | 156   | 188136 | 6000  | 194136      |

### 2018 Top Three Scores in TX-SO-CWO

| Call  | Category  | CWQs | QsoPts | Mults | Score* | Bonus | Final Score |
|-------|-----------|------|--------|-------|--------|-------|-------------|
| AE5GT | TX-SO-CWO | 469  | 1407   | 135   | 189945 | 5000  | 194945      |
| AC4CA | TX-SO-CWO | 506  | 1518   | 112   | 170016 | 2000  | 172016      |

## Texas QSO Party - 2018

K0NM[WHAR] TX-SO-CWO 406 1218 91 110838 0 110838

Here are all of the scores in the TX-SO-CWO category.

### 2018 ALL Scores Texas SO CW Only

| Call       | Category  | CWQs | QsoPts | Mults | Score* | Bonus | Final Score |
|------------|-----------|------|--------|-------|--------|-------|-------------|
| AE5GT      | TX-SO-CWO | 469  | 1407   | 135   | 189945 | 5000  | 194945      |
| AC4CA      | TX-SO-CWO | 506  | 1518   | 112   | 170016 | 2000  | 172016      |
| K0NM[WHAR] | TX-SO-CWO | 406  | 1218   | 91    | 110838 | 0     | 110838      |
| WA8ZBT     | TX-SO-CWO | 327  | 981    | 97    | 95157  | 1500  | 96657       |
| W5LXS      | TX-SO-CWO | 258  | 774    | 101   | 78174  | 2500  | 80674       |
| AJ4F       | TX-SO-CWO | 277  | 831    | 90    | 74790  | 1500  | 76290       |
| K5KJ       | TX-SO-CWO | 347  | 1041   | 72    | 74952  | 0     | 74952       |
| K0NM[DUVA] | TX-SO-CWO | 231  | 693    | 76    | 52668  | 0     | 52668       |
| K5GA       | TX-SO-CWO | 204  | 612    | 82    | 50184  | 1000  | 51184       |
| AC5K       | TX-SO-CWO | 198  | 594    | 77    | 45738  | 1000  | 46738       |
| NJ5N       | TX-SO-CWO | 266  | 798    | 58    | 46284  | 0     | 46284       |
| K1PQS      | TX-SO-CWO | 225  | 675    | 68    | 45900  | 0     | 45900       |
| N5AW       | TX-SO-CWO | 220  | 660    | 69    | 45540  | 0     | 45540       |
| K5IX       | TX-SO-CWO | 174  | 522    | 78    | 40716  | 1500  | 42216       |
| W8FN       | TX-SO-CWO | 215  | 645    | 65    | 41925  | 0     | 41925       |
| W5MIG      | TX-SO-CWO | 202  | 606    | 62    | 37572  | 0     | 37572       |
| K5ME       | TX-SO-CWO | 187  | 561    | 65    | 36465  | 500   | 36965       |
| K5AX       | TX-SO-CWO | 149  | 447    | 72    | 32184  | 0     | 32184       |
| K5TMT      | TX-SO-CWO | 141  | 423    | 70    | 29610  | 1000  | 30610       |
| N9OF       | TX-SO-CWO | 151  | 453    | 61    | 27633  | 0     | 27633       |
| KT5V       | TX-SO-CWO | 124  | 372    | 64    | 23808  | 0     | 23808       |
| W5YDM      | TX-SO-CWO | 143  | 429    | 54    | 23166  | 0     | 23166       |
| K17ID      | TX-SO-CWO | 117  | 351    | 55    | 19305  | 0     | 19305       |
| K5NA       | TX-SO-CWO | 107  | 321    | 60    | 19260  | 0     | 19260       |
| K5SBR      | TX-SO-CWO | 76   | 228    | 62    | 14136  | 2000  | 16136       |
| NV5F       | TX-SO-CWO | 90   | 270    | 38    | 10260  | 0     | 10260       |
| K5SS       | TX-SO-CWO | 73   | 219    | 45    | 9855   | 0     | 9855        |
| W0VX       | TX-SO-CWO | 71   | 213    | 45    | 9585   | 0     | 9585        |
| N5WW       | TX-SO-CWO | 69   | 207    | 44    | 9108   | 0     | 9108        |
| K8LS       | TX-SO-CWO | 74   | 222    | 36    | 7992   | 0     | 7992        |
| W5DW       | TX-SO-CWO | 55   | 165    | 40    | 6600   | 0     | 6600        |
| NZ5A       | TX-SO-CWO | 68   | 204    | 32    | 6528   | 0     | 6528        |
| WA5LXS     | TX-SO-CWO | 36   | 108    | 32    | 3456   | 500   | 3956        |
| KB5RF      | TX-SO-CWO | 36   | 108    | 21    | 2268   | 0     | 2268        |
| N5EKW      | TX-SO-CWO | 22   | 66     | 15    | 990    | 0     | 990         |
| NT5TT      | TX-SO-CWO | 18   | 54     | 16    | 864    | 0     | 864         |
| N5NAA      | TX-SO-CWO | 15   | 45     | 14    | 630    | 0     | 630         |
| W9MC       | TX-SO-CWO | 9    | 27     | 9     | 243    | 0     | 243         |
| W5QLF      | TX-SO-CWO | 5    | 15     | 5     | 75     | 0     | 75          |

## Texas QSO Party - 2018

---

|      |           |   |    |   |    |   |    |
|------|-----------|---|----|---|----|---|----|
| WC5D | TX-SO-CWO | 6 | 18 | 4 | 72 | 0 | 72 |
| W0EA | TX-SO-CWO | 1 | 3  | 1 | 3  | 0 | 3  |

**Texas Single Op Phone Only Category** – In 2018 the TX-SO-PHO category managed to attract logs from 29 entrants which was a decrease from the 40 logs received in 2017. Participants in this category logged an average of 126 QSOs and 30 mults. The top three players averaged 715 Qs and 81 mults. As in other years very little emphasis was placed on tracking the mobiles, since most of the mobiles were CW only and not available to the TX-SO-PHO category. Congratulations go out to Gene-K5LLA for consecutive top dog finishes in this category in the last three years (actually going back further). As you can see from the tables below Gene has managed to exceed the 1000 Qs 100 mult level in each of the 2016-18 years and is a frequent occupant of one of the TQP BIC chairs. Many thanks are due Gene for his continued support of the TQP.

### 2016 Top Three Scores in TX-SO-PHO

| Call  | Category  | PHQs | QsoPts | Mults | Score* | Bonus | Final Score |
|-------|-----------|------|--------|-------|--------|-------|-------------|
| K5LLA | TX-SO-PHO | 1232 | 2464   | 120   | 295680 | 0     | 295680      |
| K5IZO | TX-SO-PHO | 354  | 708    | 131   | 92748  | 2000  | 94748       |
| AD5WB | TX-SO-PHO | 498  | 996    | 90    | 89640  | 0     | 89640       |

### 2017 Top Three Scores in TX-SO-PHO

| Call  | Category  | PHQs | QsoPts | Mults | Score  | Bonus | Total Score |
|-------|-----------|------|--------|-------|--------|-------|-------------|
| K5LLA | TX-SO-PHO | 1083 | 2166   | 152   | 329232 | 0     | 329232      |
| N5IT  | TX-SO-PHO | 511  | 1022   | 127   | 129794 | 1000  | 130794      |
| AD5WB | TX-SO-PHO | 447  | 894    | 121   | 108174 | 1000  | 109174      |

### 2018 Top Three Scores in TX-SO-PHO

| Call  | Category  | PHQs | QsoPts | Mults | Score  | Bonus | Total Score |
|-------|-----------|------|--------|-------|--------|-------|-------------|
| K5LLA | TX-SO-PHO | 1379 | 2758   | 101   | 278558 | 0     | 278558      |
| NU5DE | TX-SO-PHO | 609  | 1218   | 53    | 64554  | 0     | 64554       |
| N5IT  | TX-SO-PHO | 446  | 892    | 67    | 59764  | 0     | 59764       |

Here are the scores of all participants in the TX-SO-PHO category.

### 2018 ALL Scores Texas SO PHO

| Call   | Category  | PHQs | QsoPts | Mults | Score  | Bonus | Final Score |
|--------|-----------|------|--------|-------|--------|-------|-------------|
| K5LLA  | TX-SO-PHO | 1379 | 2758   | 101   | 278558 | 0     | 278558      |
| NU5DE  | TX-SO-PHO | 609  | 1218   | 53    | 64554  | 0     | 64554       |
| N5IT   | TX-SO-PHO | 446  | 892    | 67    | 59764  | 0     | 59764       |
| W5NAC  | TX-SO-PHO | 320  | 640    | 76    | 48640  | 500   | 49140       |
| KJ5MA  | TX-SO-PHO | 304  | 608    | 62    | 37696  | 0     | 37696       |
| N5DTT  | TX-SO-PHO | 216  | 432    | 69    | 29808  | 1000  | 30808       |
| WB8LBZ | TX-SO-PHO | 127  | 254    | 72    | 18288  | 2000  | 20288       |
| K5IZO  | TX-SO-PHO | 147  | 294    | 60    | 17640  | 500   | 18140       |
| K5LRK  | TX-SO-PHO | 132  | 264    | 53    | 13992  | 0     | 13992       |
| W5JNP  | TX-SO-PHO | 162  | 324    | 43    | 13932  | 0     | 13932       |
| K5LGX  | TX-SO-PHO | 83   | 166    | 36    | 5976   | 0     | 5976        |
| KB5WWW | TX-SO-PHO | 79   | 158    | 37    | 5846   | 0     | 5846        |

## Texas QSO Party - 2018

|        |           |    |     |    |      |      |      |
|--------|-----------|----|-----|----|------|------|------|
| KR5G   | TX-SO-PHO | 51 | 102 | 29 | 2958 | 0    | 2958 |
| W5KV   | TX-SO-PHO | 50 | 100 | 27 | 2700 | 0    | 2700 |
| WB5LJO | TX-SO-PHO | 13 | 26  | 10 | 260  | 2000 | 2260 |
| KG5WPE | TX-SO-PHO | 22 | 44  | 18 | 792  | 500  | 1292 |
| KD5FBA | TX-SO-PHO | 28 | 56  | 23 | 1288 | 0    | 1288 |
| NW5Q   | TX-SO-PHO | 22 | 44  | 18 | 792  | 0    | 792  |
| W5CSM  | TX-SO-PHO | 22 | 44  | 17 | 748  | 0    | 748  |
| N5AJD  | TX-SO-PHO | 13 | 26  | 12 | 312  | 0    | 312  |
| WE5TR  | TX-SO-PHO | 14 | 28  | 11 | 308  | 0    | 308  |
| W5TKZ  | TX-SO-PHO | 8  | 16  | 7  | 112  | 0    | 112  |
| KB6OJE | TX-SO-PHO | 6  | 12  | 5  | 60   | 0    | 60   |
| KF5RUW | TX-SO-PHO | 6  | 12  | 5  | 60   | 0    | 60   |
| KC5LL  | TX-SO-PHO | 5  | 10  | 4  | 40   | 0    | 40   |
| KG5WEO | TX-SO-PHO | 5  | 10  | 4  | 40   | 0    | 40   |
| KG5VJP | TX-SO-PHO | 3  | 6   | 3  | 18   | 0    | 18   |
| KU5Y   | TX-SO-PHO | 2  | 4   | 2  | 8    | 0    | 8    |
| N5BIA  | TX-SO-PHO | 2  | 4   | 2  | 8    | 0    | 8    |

**Texas Single Op Mixed Mode Category** – In 2017 the TX-SO-MIX category managed to attract logs from only 12, half of the 24 entrants from 2017 and approximately the same number as in 2016. On average participants in this category split their QSOs between CW and Phone 52% vs 48% respectively. As expected there was more focus on tracking the mobiles than in the TX-SO-PHO category. Frank-WA2VYA ran away with the top spot in this category again with a focus on CW (63%) vs Phone (37%). For the top three entrants scores were significantly down from the 2017 scores but significantly up from those of 2016. Except for consecutive year top-dog finishes by WA2VYA this category seems to be rather fluid in the top three spots with no repeats other than WA2VYA.

### 2016 Top Three Scores in TX-SO-MIX

| Call | Category  | CWQs | PHQs | QsoPts | Mults | Score* | Bonus | Final Score |
|------|-----------|------|------|--------|-------|--------|-------|-------------|
| N5DO | TX-SO-MIX | 254  | 110  | 982    | 156   | 153192 | 4500  | 157692      |
| W5VX | TX-SO-MIX | 78   | 148  | 530    | 85    | 45050  | 0     | 45050       |
| K0YY | TX-SO-MIX | 36   | 141  | 390    | 96    | 37440  | 1000  | 38440       |

### 2017 Top Three Scores in TX-SO-MIX

| Call   | Category  | CWQs | PHQs | QsoPts | Mults | Score* | Bonus | Final Score |
|--------|-----------|------|------|--------|-------|--------|-------|-------------|
| WA2VYA | TX-SO-MIX | 341  | 381  | 1785   | 203   | 362355 | 8500  | 370855      |
| WA5DTK | TX-SO-MIX | 62   | 500  | 1186   | 124   | 147064 | 500   | 147564      |
| K5KJ   | TX-SO-MIX | 262  | 112  | 1010   | 118   | 119180 | 500   | 119680      |

### 2018 Top Three Scores in TX-SO-MIX

| Call   | Category  | CWQs | PHQs | QsoPts | Mults | Score* | Bonus | Final Score |
|--------|-----------|------|------|--------|-------|--------|-------|-------------|
| WA2VYA | TX-SO-MIX | 368  | 212  | 1528   | 149   | 227672 | 5000  | 232672      |
| N5JJ   | TX-SO-MIX | 230  | 281  | 1252   | 74    | 92648  | 0     | 92648       |
| N5RGH  | TX-SO-MIX | 255  | 31   | 827    | 82    | 67814  | 0     | 67814       |

## Texas QSO Party - 2018

---

Here are the results for all entrants in the TX-SO-MIX category. Thanks to all for supporting the TQP.

### 2018 ALL Scores Texas SO Mixed Mode

| Call   | Category  | CWQs | PHQs | QsoPts | Mults | Score* | Bonus | Final Score |
|--------|-----------|------|------|--------|-------|--------|-------|-------------|
| WA2VYA | TX-SO-MIX | 368  | 212  | 1528   | 149   | 227672 | 5000  | 232672      |
| N5JJ   | TX-SO-MIX | 230  | 281  | 1252   | 74    | 92648  | 0     | 92648       |
| N5RGH  | TX-SO-MIX | 255  | 31   | 827    | 82    | 67814  | 0     | 67814       |
| KI5LR  | TX-SO-MIX | 161  | 94   | 671    | 95    | 63745  | 1000  | 64745       |
| WB5TKI | TX-SO-MIX | 52   | 159  | 474    | 76    | 36024  | 500   | 36524       |
| W5VX   | TX-SO-MIX | 89   | 95   | 457    | 67    | 30619  | 0     | 30619       |
| WA5DSS | TX-SO-MIX | 41   | 100  | 323    | 58    | 18734  | 0     | 18734       |
| K9ING  | TX-SO-MIX | 1    | 85   | 173    | 55    | 9515   | 500   | 10015       |
| W2MN   | TX-SO-MIX | 35   | 1    | 107    | 32    | 3424   | 500   | 3924        |
| W5DLP  | TX-SO-MIX | 15   | 22   | 89     | 23    | 2047   | 0     | 2047        |
| WB5K   | TX-SO-MIX | 17   | 3    | 57     | 14    | 798    | 0     | 798         |

**Texas Single Op QRP Category** – Even with the poor conditions continuing in 2018 Cranz-WB5BKL maintained his support of the TX-SO-QRP category. Hopefully next year some others will join Cranz and provide some competition.

### 2016 Top Three Scores in TX-SO-QRP

| Call   | Category  | CWQs | PHQs | QsoPts | Mults | Score* | Bonus | Final Score |
|--------|-----------|------|------|--------|-------|--------|-------|-------------|
| WB5BKL | TX-SO-QRP | 159  | 0    | 477    | 88    | 41976  | 2500  | 44476       |
| N1CC   | TX-SO-QRP | 139  | 62   | 541    | 75    | 40575  | 0     | 40575       |
| KN5L   | TX-SO-QRP | 80   | 20   | 280    | 62    | 17360  | 0     | 17360       |

### 2017 Top Three (ALL) Scores in TX-SO-QRP

| Call     | Category  | CWQs | PHQs | QsoPts | Mults | Score* | Bonus | Final Score |
|----------|-----------|------|------|--------|-------|--------|-------|-------------|
| WB5BKL   | TX-SO-QRP | 196  | 0    | 588    | 113   | 66444  | 4500  | 70944       |
| N5DUX    | TX-SO-QRP | 0    | 37   | 74     | 34    | 2516   | 0     | 2516        |
| No Entry | TX-SO-QRP | -    | -    | -      | -     | -      | -     | -           |

### 2018 Top Three (ALL & Only) Scores in TX-SO-QRP

| Call     | Category  | CWQs | PHQs | QsoPts | Mults | Score* | Bonus | Final Score |
|----------|-----------|------|------|--------|-------|--------|-------|-------------|
| WB5BKL   | TX-SO-QRP | 160  | 0    | 480    | 64    | 30720  | 500   | 31220       |
| No Entry | TX-SO-QRP | -    | -    | -      | -     | -      | -     | -           |
| No Entry | TX-SO-QRP | -    | -    | -      | -     | -      | -     | -           |

**Texas Mobile Single Op CW Only Category** –The TXM-SO-CWO category held its own this year with the same number of logs as in 2017. The top entry, Alan-N5NA, is a regular in this category as is Mark-K5GQ. In 2017 Gator-N5RZ re-entered the TX-SO-CWO category after a several year absence from the TQP, and in 2018 decided to hit the road again as a TXM-SO-CWO entry while Robert-K5PI decided to return to the mobile multi-op category. N5NA continued his decisive hold on the top spot with another multi-county mobile effort covering 35 West Texas counties while N5RZ covered 29 counties in the south-

## Texas QSO Party - 2018

---

central part of the state. Thanks to all the operators who took part in this category including out-of-state entrant Ron-AF5Q who came over from Oklahoma to help out in the Panhandle. As a group the TXM-SO-CWO operators activated 118 counties and in nearly all of those counties their operation was the only station on the air. The group was well-coordinated as, of those 118 counties, there was only one county in which their activity overlapped.

### 2016 Top Three (ALL) Scores in TXM-SO-CWO

| Call | Category   | CWQs | QsoPts | Mults | Score* | Bonus | Final Score |
|------|------------|------|--------|-------|--------|-------|-------------|
| N5NA | TXM-SO-CWO | 1173 | 3519   | 101   | 355419 | 29500 | 384919      |
| K55A | TXM-SO-CWO | 806  | 2418   | 82    | 198276 | 20000 | 218276      |
| N3BB | TXM-SO-CWO | 39   | 117    | 31    | 3627   | 2000  | 5627        |

### 2017 ALL Scores in TXM-SO-CWO

| Call             | Category   | CWQs | QsoPts | Mults | Score* | Bonus | Final Score |
|------------------|------------|------|--------|-------|--------|-------|-------------|
| N5NA             | TXM-SO-CWO | 1640 | 4920   | 107   | 526440 | 37000 | 563440      |
| W5CT(op K5PI)    | TXM-SO-CWO | 1632 | 4896   | 106   | 518976 | 37500 | 556476      |
| K5GQ(@NM5G/M)    | TXM-SO-CWO | 391  | 1173   | 65    | 76245  | 20000 | 96245       |
| AF5Q             | TXM-SO-CWO | 393  | 1179   | 44    | 51876  | 21000 | 72876       |
| W3DYA(Check Log) | TXM-SO-CWO | 403  | 1209   | 68    | 82212  | 19000 | 101212      |

### 2018 ALL Scores in TXM-SO-CWO

| Call          | Category   | CWQs | QsoPts | Mults | Score* | Bonus | Final Score |
|---------------|------------|------|--------|-------|--------|-------|-------------|
| N5NA          | TXM-SO-CWO | 1576 | 4728   | 94    | 444432 | 35500 | 479932      |
| N5RZ          | TXM-SO-CWO | 1182 | 3546   | 92    | 326232 | 29500 | 355732      |
| W3DYA         | TXM-SO-CWO | 551  | 1653   | 61    | 100833 | 22000 | 122833      |
| K5GQ(@NM5G/M) | TXM-SO-CWO | 454  | 1362   | 61    | 83082  | 26500 | 109582      |
| AF5Q          | TXM-SO-CWO | 240  | 720    | 46    | 33120  | 6000  | 39120       |

**Texas Mobile Single Op Phone Only Category** –The low number of entries in the TXM-SO-PHO category is a reflection of the difficulty of making SSB contacts from a 100w mobile in today's conditions. As can be seen from the table below QSO and mult counts were down considerably from previous years.

### 2016 Top Three Scores in TXM-SO-PHO

| Call   | Category   | PHQs | QsoPts | Mults | Score* | Bonus | Final Score |
|--------|------------|------|--------|-------|--------|-------|-------------|
| WB0TEV | TXM-SO-PHO | 418  | 836    | 80    | 66880  | 40500 | 107380      |
| NM5G   | TXM-SO-PHO | 260  | 520    | 48    | 24960  | 23000 | 47960       |
| W1JCW  | TXM-SO-PHO | 264  | 528    | 80    | 42240  | 4000  | 46240       |

### 2017 All Scores in TXM-SO-PHO

| Call   | Category   | PHQs | QsoPts | Mults | Score* | Bonus | Final Score |
|--------|------------|------|--------|-------|--------|-------|-------------|
| W1JCW  | TXM-SO-PHO | 409  | 818    | 97    | 79346  | 5000  | 84346       |
| K15AH  | TXM-SO-PHO | 189  | 378    | 53    | 20034  | 22500 | 42534       |
| WA5DSS | TXM-SO-PHO | 140  | 280    | 55    | 15400  | 13000 | 28400       |
| W2IK   | TXM-SO-PHO | 138  | 276    | 42    | 11592  | 9000  | 20592       |
| WB5KIA | TXM-SO-PHO | 31   | 62     | 21    | 1302   | 2000  | 3302        |
| WB5LJO | TXM-SO-PHO | 29   | 58     | 28    | 1624   | 0     | 1624        |

## Texas QSO Party - 2018

---

### 2018 All Scores in TXM-SO-PHO

| Call   | Category   | PHQs | QsoPts | Mults | Score* | Bonus | Final Score |
|--------|------------|------|--------|-------|--------|-------|-------------|
| WT5NA  | TXM-SO-PHO | 174  | 348    | 52    | 18096  | 11000 | 29096       |
| KD6CUB | TXM-SO-PHO | 75   | 150    | 27    | 4050   | 5000  | 9050        |
| KF5WDJ | TXM-SO-PHO | 15   | 30     | 11    | 330    | 2000  | 2330        |
| W5DTB  | TXM-SO-PHO | 19   | 38     | 7     | 266    | 1000  | 1266        |

**Texas Mobile Single Op Mixed Mode Category** –This year there were three entries in this category, representing an increase of one.

### 2016 Score in TXM-SO-MIX

| Call | Category   | CWQs | PHQs | QsoPts | Mults | Score* | Bonus | Final Score |
|------|------------|------|------|--------|-------|--------|-------|-------------|
| W0BH | TXM-SO-MIX | 743  | 617  | 3463   | 106   | 367078 | 28500 | 395578      |

### 2017 Scores in TXM-SO-MIX

| Call | Category   | CWQs | PHQs | QsoPts | Mults | Score* | Bonus | Total Score |
|------|------------|------|------|--------|-------|--------|-------|-------------|
| N4CD | TXM-SO-MIX | 438  | 72   | 1458   | 87    | 126846 | 10500 | 137346      |
| K5OT | TXM-SO-MIX | 373  | 4    | 1127   | 77    | 86779  | 16000 | 102779      |

### 2018 Scores in TXM-SO-MIX

| Call   | Category   | CWQs | PHQs | QsoPts | Mults | Score* | Bonus | Total Score |
|--------|------------|------|------|--------|-------|--------|-------|-------------|
| WA5RR  | TXM-SO-MIX | 332  | 138  | 1272   | 60    | 76320  | 18000 | 94320       |
| WB5KIA | TXM-SO-MIX | 38   | 2    | 118    | 18    | 2124   | 4000  | 6124        |
| NM5G   | TXM-SO-MIX | 2    | 32   | 70     | 13    | 910    | 5000  | 5910        |

**Texas Mobile Multi-Op Category** –The TXM-MO category provides an opportunity for two (or more) operators to get together to share the driving and operating usually allowing broader county coverage than is possible with a single op plus driver. However, this year we had only one entry in this category. W5CT, with operators Robert-K5PI and Madison-W5MJ was driven through 36 counties by Steve-WK5S, operating primarily CW. Many of the counties covered by W5CT in north-central Texas were not covered by any other operations. Many thanks are due Robert and Madison for providing lots of Qs and counties to the deserving and to Steve for keeping them out of the arroyo.

### 2016 Top Three Scores in TXM-MO

| Call  | Category | CWQs | PHQs | QsoPts | Mults | Score* | Bonus | Final Score |
|-------|----------|------|------|--------|-------|--------|-------|-------------|
| K5YAA | TXM-MO   | 1464 | 126  | 4644   | 109   | 506196 | 42000 | 548196      |
| W5CT  | TXM-MO   | 1194 | 303  | 4188   | 104   | 435552 | 35000 | 470552      |
| NO5W  | TXM-MO   | 1100 | 1    | 3302   | 87    | 287274 | 41000 | 328274      |

### 2017 ALL Scores in TXM-MO

| Call  | Category | CWQs | PHQs | QsoPts | Mults | Score* | Bonus | Final Score |
|-------|----------|------|------|--------|-------|--------|-------|-------------|
| W5WRL | TXM-MO   | 0    | 650  | 1300   | 89    | 115700 | 17500 | 133200      |
| K5LOL | TXM-MO   | 0    | 166  | 332    | 45    | 14940  | 12000 | 26940       |

### 2018 ALL Scores in TXM-MO

| Call        | Category      | CWQs        | PHQs       | QsoPts      | Mults      | Score*        | Bonus        | Final Score   |
|-------------|---------------|-------------|------------|-------------|------------|---------------|--------------|---------------|
| <b>W5CT</b> | <b>TXM-MO</b> | <b>1489</b> | <b>211</b> | <b>4889</b> | <b>110</b> | <b>537790</b> | <b>36500</b> | <b>574290</b> |

**Operators:** W5CT: W5MJ, K5PI, WK5S (driver)

## Texas QSO Party - 2018

---

**Texas Multi-Op Category** –The TX-MO category provides an opportunity for two (or more) operators to get together to share the TQP experience in a flexible schedule for those who might not be able to devote the entire 18 hours of the weekend to the party. This year there were five entries in this category including a burst of activity from the N5ZC crew in Randall County up in the Panhandle headed up by Richard-N5ZC. The operation from N5ZC pushed Randall County to the top of the list in terms of number of QSOs and elevated the Panhandle DX & Contest Club to third place in the club aggregate competition. Thanks to N5ZC for organizing this activity and to the following ops that helped to create the sizzle from the Panhandle: Richard-N5ZC, Jeremy-W5JTC, Doug-W5WTX, and Matt-W5MT

### 2016 Top Three Scores in TX-MO

| Call  | Category | CWQs | PHQs | QsoPts | Mults | Score* | Bonus | Final Score |
|-------|----------|------|------|--------|-------|--------|-------|-------------|
| NU5DE | TX-MO    | 0    | 741  | 1482   | 106   | 157092 | 0     | 157092      |
| W5DXS | TX-MO    | 269  | 72   | 951    | 158   | 150258 | 6000  | 156258      |
| KN5TX | TX-MO    | 236  | 193  | 1094   | 124   | 135656 | 0     | 135656      |

### 2017 ALL Scores in TX-MO

| Call  | Category | CWQs | PHQs | QsoPts | Mults | Score* | Bonus | Final Score |
|-------|----------|------|------|--------|-------|--------|-------|-------------|
| NU5DE | TX-MO    | 0    | 1144 | 2288   | 125   | 286000 | 1000  | 287000      |
| W5RTA | TX-MO    | 0    | 888  | 1776   | 145   | 257520 | 2500  | 260020      |
| W5FMH | TX-MO    | 128  | 546  | 1476   | 111   | 163836 | 0     | 163836      |
| K5TYR | TX-MO    | 26   | 8    | 94     | 24    | 2256   | 0     | 2256        |

### 2018 ALL Scores in TX-MO

| Call   | Category | CWQs | PHQs | QsoPts | Mults | Score* | Bonus | Final Score |
|--------|----------|------|------|--------|-------|--------|-------|-------------|
| N5ZC   | TX-MO    | 466  | 1355 | 4108   | 198   | 813384 | 7500  | 820884      |
| W5RRR  | TX-MO    | 209  | 273  | 1173   | 101   | 118473 | 0     | 118473      |
| W5RTA  | TX-MO    | 0    | 603  | 1206   | 82    | 98892  | 0     | 98892       |
| WD5DDH | TX-MO    | 0    | 269  | 538    | 49    | 26362  | 0     | 26362       |
| K5TYR  | TX-MO    | 0    | 85   | 170    | 45    | 7650   | 0     | 7650        |

#### Operators-2018:

- **N5ZC:** N5ZC, W5JTC, W5WTX, W5MT;
- **W5RRR:** none supplied
- **W5RTA:** W5MRM, K5YB, N5JJI, KI5SC
- **WD5DDH:** KF5IVJ, K5SVV, KI5MM, and WR5AY
- **K5TYR:** KE5FGC WM5Q W5WVH

### Texas Club Aggregate Results

Each Texas operator submitting a log can specify which club their score should be contributed to and for each club these scores are summed to create the club's aggregate score. The winner of the club competition receives a traveling trophy as well as a permanent plaque. In 2018 there were 17 clubs represented by 60 of the 100 Texas logs submitted. Here is a summary of the top three clubs during 2016-18 followed by the detailed listing used to compile the 2018 results. One thing to note from the summary results is that having a large number of logs helps, but is not a necessary condition, for doing well as shown by the Midland ARC finishing in second place with only five logs and the Panhandle DX & Contest Club finishing in third place with a single (multi-op) log. It is good to see the Panhandle club making a strong statement from up in the northwestern part of the state. With the addition of a few mobiles to cover the Panhandle counties and a fixed single op station or two they could make a strong



## Texas QSO Party - 2018

---

effort at a second, or even first place, finish. As you will see later on in the report, in 2018 there were quite a few inactive counties in the Panhandle.

### 2016 Top Three Clubs

| <b>Club</b>                     | <b>Entries</b> | <b>Total Score</b> |
|---------------------------------|----------------|--------------------|
| Central Texas DX & Contest Club | 10             | 1349900            |
| DFW Contest Group               | 11             | 655064             |
| Midland ARC                     | 4              | 601937             |

### 2017 Top Three Clubs

| <b>Club</b>                     | <b>Entries</b> | <b>Total Score</b> |
|---------------------------------|----------------|--------------------|
| Central Texas DX & Contest Club | 15             | 2234512            |
| Midland ARC                     | 5              | 971289             |
| DFW Contest Group               | 11             | 585825             |

### 2018 Top Three Clubs

| <b>Club</b>                     | <b>Entries</b> | <b>Total Score</b> |
|---------------------------------|----------------|--------------------|
| Central Texas DX & Contest Club | 14             | 1500748            |
| Midland ARC                     | 6              | 929949             |
| Panhandle DX & Contest Club     | 1              | 820884             |

### 2018 Aggregate Scores for All Clubs

| <b>Club</b>                     | <b>Entries</b> | <b>Total Score</b> |
|---------------------------------|----------------|--------------------|
| Central Texas DX & Contest Club | 14             | 1500748            |
| Midland ARC                     | 6              | 929949             |
| Panhandle DX & Contest Club     | 1              | 820884             |
| DFW Contest Group               | 16             | 575093             |
| Texas DX Society                | 4              | 149468             |
| Johnson Spaceflight Center ARC  | 1              | 118473             |
| Northwest ARS                   | 3              | 115500             |
| South Texas DX & Contest Club   | 2              | 98967              |
| North Texas Contest Club        | 1              | 74952              |
| Nacogdoches ARC                 | 1              | 49140              |
| Tri-County ARC                  | 1              | 37696              |
| Hill Country ARC                | 1              | 37572              |
| Sun City ARC                    | 3              | 31598              |
| Ellis County ARC                | 1              | 26362              |
| Brazos Valley ARC               | 3              | 19540              |
| Port Lavaca ARC                 | 1              | 16136              |
| Lake Amateur Radio Klub         | 2              | 14300              |

## Texas QSO Party - 2018

---

### Texas Club Detailed Results

Here are the detailed scores used to compile the Texas Club Aggregate Summary. If your score is contributed to the wrong club, or to no club and it should be, please let NO5W know and a review of the log and possible correction will be made.

| Call              | Category  | Club                            | Final Score    |
|-------------------|-----------|---------------------------------|----------------|
| AC4CA             | TX-SO-CWO | Central Texas DX & Contest Club | 172016         |
| K5IX              | TX-SO-CWO | Central Texas DX & Contest Club | 42216          |
| K5NA              | TX-SO-CWO | Central Texas DX & Contest Club | 19260          |
| K8LS              | TX-SO-CWO | Central Texas DX & Contest Club | 7992           |
| N5AW              | TX-SO-CWO | Central Texas DX & Contest Club | 45540          |
| N5NAA             | TX-SO-CWO | Central Texas DX & Contest Club | 630            |
| N9OF              | TX-SO-CWO | Central Texas DX & Contest Club | 27633          |
| W9MC              | TX-SO-CWO | Central Texas DX & Contest Club | 243            |
| W2MN              | TX-SO-MIX | Central Texas DX & Contest Club | 3924           |
| WA2VYA            | TX-SO-MIX | Central Texas DX & Contest Club | 232672         |
| K5LLA             | TX-SO-PHO | Central Texas DX & Contest Club | 278558         |
| NU5DE             | TX-SO-PHO | Central Texas DX & Contest Club | 64554          |
| WB5BKL            | TX-SO-QRP | Central Texas DX & Contest Club | 31220          |
| W5CT              | TXM-MO    | Central Texas DX & Contest Club | 574290         |
| <b>Club Total</b> |           |                                 | <b>1500748</b> |

| Call              | Category   | Club        | Final Score   |
|-------------------|------------|-------------|---------------|
| W5LXS             | TX-SO-CWO  | Midland ARC | 80674         |
| K9ING             | TX-SO-MIX  | Midland ARC | 10015         |
| N5NA              | TXM-SO-CWO | Midland ARC | 479932        |
| N5RZ              | TXM-SO-CWO | Midland ARC | 355732        |
| KF5WDJ            | TXM-SO-PHO | Midland ARC | 2330          |
| W5DTB             | TXM-SO-PHO | Midland ARC | 1266          |
| <b>Club Total</b> |            |             | <b>929949</b> |

| Call              | Category | Club                        | Final Score   |
|-------------------|----------|-----------------------------|---------------|
| N5ZC              | TX-MO    | Panhandle DX & Contest Club | 820884        |
| <b>Club Total</b> |          |                             | <b>820884</b> |

| Call       | Category  | Club              | Final Score |
|------------|-----------|-------------------|-------------|
| AC5K       | TX-SO-CWO | DFW Contest Group | 46738       |
| K0NM[WHAR] | TX-SO-CWO | DFW Contest Group | 110838      |
| K0NM[DUVA] | TX-SO-CWO | DFW Contest Group | 52668       |
| K5AX       | TX-SO-CWO | DFW Contest Group | 32184       |
| K5ME       | TX-SO-CWO | DFW Contest Group | 36965       |
| K5SS       | TX-SO-CWO | DFW Contest Group | 9855        |

## Texas QSO Party - 2018

---

|        |            |                   |       |
|--------|------------|-------------------|-------|
| KT5V   | TX-SO-CWO  | DFW Contest Group | 23808 |
| W0VX   | TX-SO-CWO  | DFW Contest Group | 9585  |
| W8FN   | TX-SO-CWO  | DFW Contest Group | 41925 |
| WA5LXS | TX-SO-CWO  | DFW Contest Group | 3956  |
| WA8ZBT | TX-SO-CWO  | DFW Contest Group | 96657 |
| WB5K   | TX-SO-MIX  | DFW Contest Group | 798   |
| NW5Q   | TX-SO-PHO  | DFW Contest Group | 792   |
| W5JNP  | TX-SO-PHO  | DFW Contest Group | 13932 |
| WA5RR  | TXM-SO-MIX | DFW Contest Group | 94320 |
| WC5D   | TX-SO-CWO  | DFW Contest Group | 72    |

**Club Total      575093**

| <b>Call</b> | <b>Category</b> | <b>Club</b>      | <b>Final Score</b> |
|-------------|-----------------|------------------|--------------------|
| AJ4F        | TX-SO-CWO       | Texas DX Society | 76290              |
| WB5TKI      | TX-SO-MIX       | Texas DX Society | 36524              |
| KB5WWW      | TX-SO-PHO       | Texas DX Society | 5846               |
| N5DTT       | TX-SO-PHO       | Texas DX Society | 30808              |

**Club Total      149468**

| <b>Call</b> | <b>Category</b> | <b>Club</b>                    | <b>Final Score</b> |
|-------------|-----------------|--------------------------------|--------------------|
| W5RRR       | TX-SO-MIX       | Johnson Spaceflight Center ARC | 118473             |

**Club Total      118473**

| <b>Call</b> | <b>Category</b> | <b>Club</b>   | <b>Final Score</b> |
|-------------|-----------------|---------------|--------------------|
| K5GQ        | TXM-SO-CWO      | Northwest ARS | 109582             |
| NM5G        | TXM-SO-MIX      | Northwest ARS | 5910               |
| N5BIA       | TX-SO-PHO       | Northwest ARS | 8                  |

**Club Total      115500**

| <b>Call</b> | <b>Category</b> | <b>Club</b>                   | <b>Final Score</b> |
|-------------|-----------------|-------------------------------|--------------------|
| W5RTA       | TX-MO           | South Texas DX & Contest Club | 98892              |
| W5QLF       | TX-SO-CWO       | South Texas DX & Contest Club | 75                 |

**Club Total      98967**

| <b>Call</b> | <b>Category</b> | <b>Club</b>              | <b>Final Score</b> |
|-------------|-----------------|--------------------------|--------------------|
| K5KJ        | TX-SO-CWO       | North Texas Contest Club | 74952              |

**Club Total      74952**

| <b>Call</b> | <b>Category</b> | <b>Club</b>     | <b>Final Score</b> |
|-------------|-----------------|-----------------|--------------------|
| W5NAC       | TX-SO-PHO       | Nacogdoches ARC | 49140              |

**Club Total      49140**

## Texas QSO Party - 2018

---

| Call  | Category  | Club           | Final Score                  |
|-------|-----------|----------------|------------------------------|
| KJ5MA | TX-SO-PHO | Tri-County ARC | 37696                        |
|       |           |                | <b>Club Total      37696</b> |

| Call  | Category  | Club             | Final Score                  |
|-------|-----------|------------------|------------------------------|
| W5MIG | TX-SO-CWO | Hill Country ARC | 37572                        |
|       |           |                  | <b>Club Total      37572</b> |

| Call   | Category   | Club         | Final Score                  |
|--------|------------|--------------|------------------------------|
| WB8LBZ | TX-SO-PHO  | Sun City ARC | 20288                        |
| KD6CUB | TXM-SO-PHO | Sun City ARC | 9050                         |
| WB5LJO | TX-SO-PHO  | Sun City ARC | 2260                         |
|        |            |              | <b>Club Total      31598</b> |

| Call   | Category | Club             | Final Score                  |
|--------|----------|------------------|------------------------------|
| WD5DDH | TX-MO    | Ellis County ARC | 26362                        |
|        |          |                  | <b>Club Total      26362</b> |

| Call   | Category  | Club              | Final Score                  |
|--------|-----------|-------------------|------------------------------|
| K5IZO  | TX-SO-PHO | Brazos Valley ARC | 18140                        |
| KD5FBA | TX-SO-PHO | Brazos Valley ARC | 1288                         |
| W5TKZ  | TX-SO-PHO | Brazos Valley ARC | 112                          |
|        |           |                   | <b>Club Total      19540</b> |

| Call  | Category  | Club            | Final Score                  |
|-------|-----------|-----------------|------------------------------|
| K5SBR | TX-SO-CWO | Port Lavaca ARC | 16136                        |
|       |           |                 | <b>Club Total      16136</b> |

| Call  | Category  | Club                    | Final Score                  |
|-------|-----------|-------------------------|------------------------------|
| K5LRK | TX-SO-PHO | Lake Amateur Radio Klub | 13992                        |
| WE5TR | TX-SO-PHO | Lake Amateur Radio Klub | 308                          |
|       |           |                         | <b>Club Total      14300</b> |

### Some Statistics from the TQP Logs

It's good to capture some statistics from the submitted logs in order to assess how the QSO party is going – up/down/sideways. Here are some statistics from the 2018 TQP including information on the level of participation, county activity, bands and modes used, etc.

**Logs Received** – In 2018 we received 258 logs with 100 of those logs being from inside Texas and 158 being from outside the state. In 2017 we received 260 logs with 145 being from outside the state and 115 from inside. Thus we had a drop off in logs from inside the state and an increase in logs from outside. The total logs remained essentially steady from 2017 but the decrease in logs from inside the state needs to be addressed. Every year a significant number of stations take part in the party, as

## Texas QSO Party - 2018

---

evidenced by their calls being in a number of submitted logs, but, for one reason or another, fail to submit a log. A by-product of the log processing is a Received Stations Report which lists the number of logs in which each station appears, the number of QSOs represented, and whether the station submitted a log. The following data pulled from this report gives an indication of additional logs that could have been received but were not.

| QSOs in Rcvd Logs | Number of No Log Stations |
|-------------------|---------------------------|
| 100               | 4                         |
| 75                | 11                        |
| 50                | 20                        |
| 25                | 76                        |
| 10                | 256                       |

In this table the first column is a number of QSOs in submitted logs where a station is listed as the received station. The second column is the number of stations that did not submit a log but where the number of reported QSOs with that station is greater than or equal to the number in the first column. So, for example, there were 4 stations that were reported in more than 100 QSOs in the submitted logs but did not submit a log. There were 76 stations that were reported in more than 25 QSOs in the submitted logs but did not submit a log. So, taking the 25 QSO level as a threshold for submitting a log, the total logs received could have been  $257 + 76 = 333$ . An important question along these lines is why many stations fail to submit a log, especially the 20 or so that were reported to have made 50 or more QSOs, and what can be done to increase the number of submissions from this group. Submitting a log is a lot like sending a thank you card to someone who has hosted a party you've attended – it's the courteous thing to do. The other participants that submitted a log will appreciate it since more tend to increase the accuracy of the log checking. And besides it may provide incentive for the host to give the party again. So if you are reading this and you are one of the group of "made significant number of QSOs but did not send a thank you note with log attached" please consider filing a log after the next TQP.

**Band Statistics:** The 40m and 20m bands continue to be the primary bands for the party. Here's how the break down went in 2018 versus 2017 and 2016. The 80m band continued to pick up some from 40m as did the 20m band. No surprises on the other bands.

| Band | Percent of QSOs on Band |      |      |
|------|-------------------------|------|------|
|      | 2018                    | 2017 | 2016 |
| 160  | 0                       | <1   | <1   |
| 80   | 4                       | 2    | ~1   |
| 40   | 42                      | 50   | 36   |
| 20   | 54                      | 47   | 63   |
| 15   | 0                       | <1   | <1   |
| 10   | 0                       | <1   | <1   |

**Mode Statistics:** CW continues to be the most popular mode, perhaps due to the large number of QSOs made by mobiles and the fact that CW is the easier mode from a mobile. The breakdown in 2018 was

## Texas QSO Party - 2018

---

67% CW and 33% SSB whereas in 2017 was 56% CW and 44% SSB. There was also a very small number (<1%) of RTTY QSOs that are embedded in the CW QSOs.

**QSO Destination:** When you give a party you hope that those from outside your area will attend and that the “locals” will mix and mingle with the outsiders and will not limit their conversations to other locals. Here’s how the 2018 TQP stacked up on that statistic. You can see that the 2018 Texas QSO Party was definitely outward facing.

| QSO Destination | Percent of QSOs |
|-----------------|-----------------|
| Texas –to-Texas | 15%             |
| Texas –to-US    | 78%             |
| Texas-to-Canada | 4%              |
| Texas-to-DX     | 3%              |

**Butt-in-Chair Stations** – These are the stations that were active in every hour of the party by virtue of the fact that they made at least one contact in each hour, but of course in many cases, it was much more than one QSO. We certainly appreciate these operators, and their chairs, for the support they show for the TQP.

- **Mobile:** N5NA, N5RZ, W5CT
- **Texas Fixed:** AE5GT, K5IZO, K5LLA, K15LR, N5IT, N5ZC, W5LXS, WA2VYA, WB5BKL, WB8LBZ
- **Out-of-state:** K2DSW, K3TW, N4PN, N6MU, W5TM, W9DC, WA6KHK, WB9CIF

Then there were a few who missed BIC status by only one hour

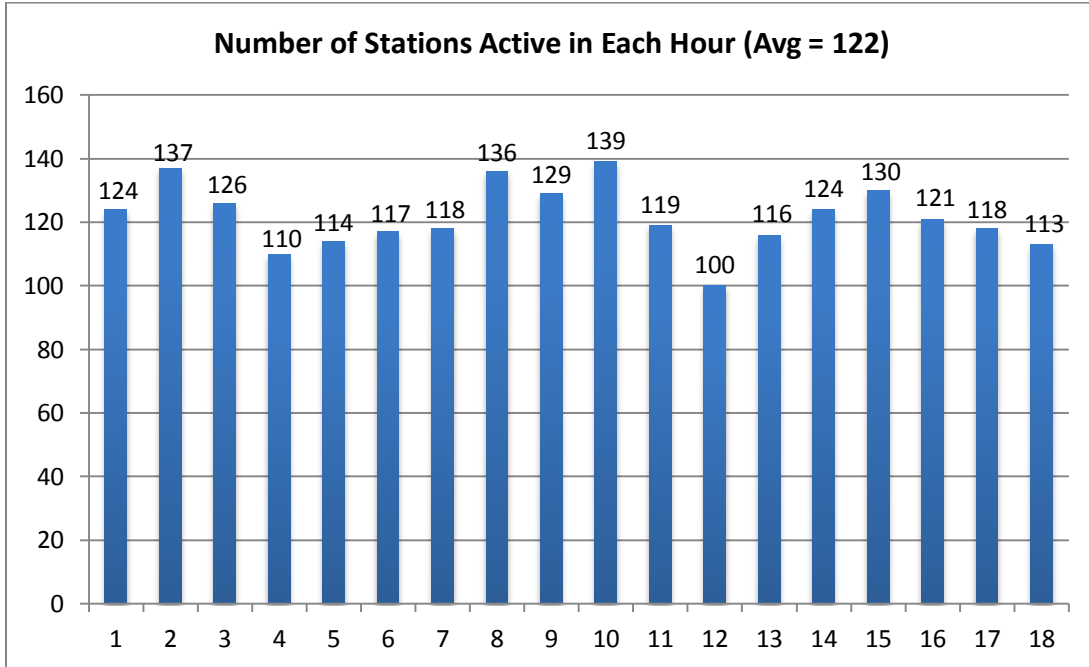
- **Mobile:** K5GQ
- **Texas Fixed:** None
- **Out-of-state:** K0AP, K0HNC, K2ZR, KK7AC, W7GF, WB8WKQ

And finally a few who missed BIC status by only two hours

- **Mobile:** W3DYA, WA5RR
- **Texas Fixed:** K0NM, K5TMT, NU5DE, W5RTA, WD5CSK
- **Out-of-state:** DL3DXX, W4XK

**Activity Levels** – Here are some charts showing the level of activity from several different viewpoints. The first chart shows the number of active stations in each hour, for stations that submitted a log. In the chart below the hour labeled 1 is hour beginning 1400z on the first (Saturday) session, the hour labeled 12 is hour beginning 0100z on the first session, and hour labeled 13 is the hour beginning 1400z on the second session (Sunday). As is typical of many QSO parties the first hour is one of the slowest and activity builds during the day reaching a peak around 2300z and drops off in the last hour of the first session. The average number of stations active during the 18 hours of the party was 122. The average number of stations active during the first session was 122 and during the second session 120, so there was essentially the same number of stations on during both sessions.

## Texas QSO Party - 2018

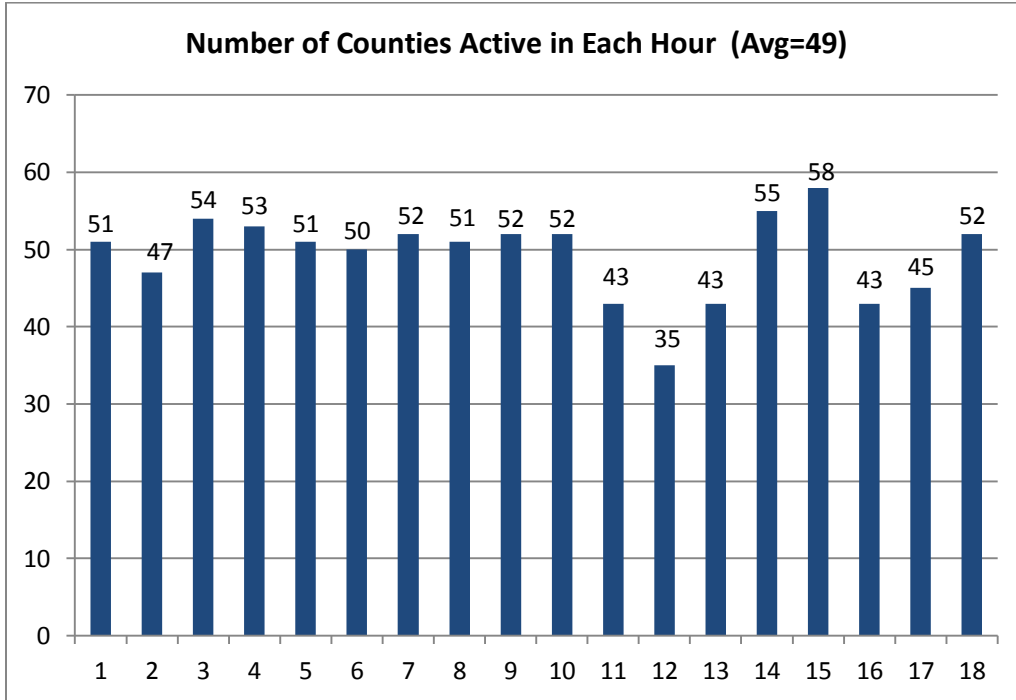


**County Activity** – The ten most active counties in terms of total number of QSOs are shown in this table. All but three of the top ten were on the air all 18 hours of the party. It’s interesting to note, if you sum the CWQ and PHQ columns, that for the 10 most active counties the preferred mode was Phone (CWQ=46% and PHQ=54%) which is opposite the mode-split for the overall party which was CWQ=67% and PHQ=33%. This is probably due to the fact that only four of the top ten counties (Harris, Gillespie, Bandera, and McLennan) were each visited by a single CWO mobile.

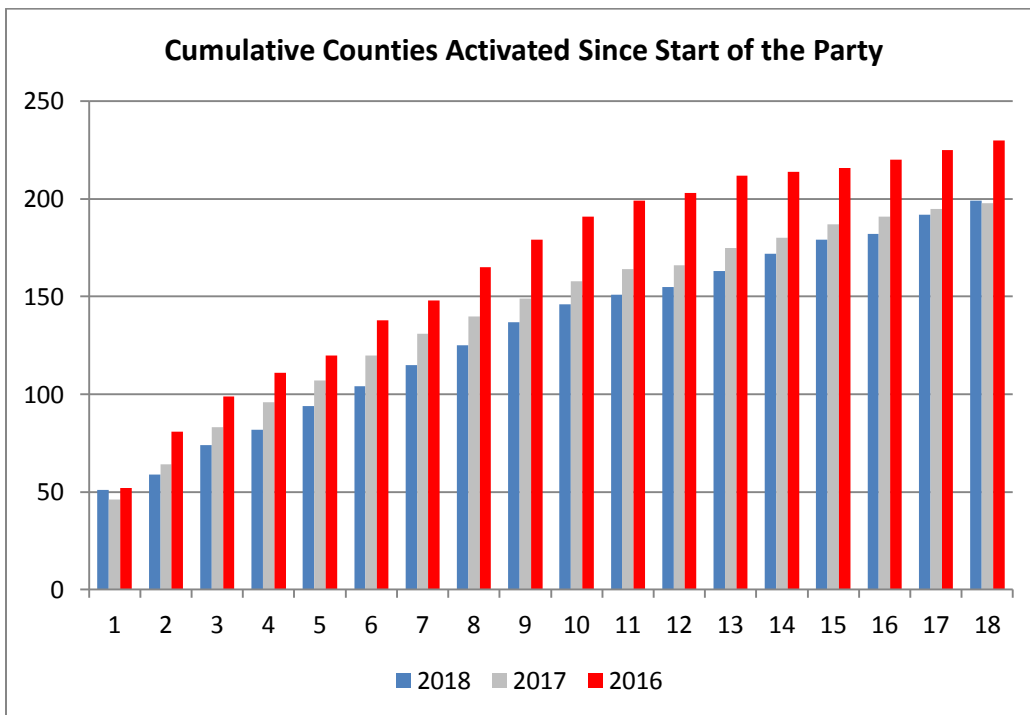
| County     | Stations | CWQs | PHQs | Total Qs | Hours On Air |
|------------|----------|------|------|----------|--------------|
| Randall    | 3        | 722  | 1371 | 2093     | 18           |
| Williamson | 4        | 193  | 1431 | 1624     | 18           |
| Bastrop    | 2        | 380  | 833  | 1213     | 18           |
| Dallas     | 10       | 891  | 43   | 934      | 18           |
| Wharton    | 1        | 850  | 0    | 850      | 15           |
| Harris     | 7        | 430  | 364  | 794      | 18           |
| Gillespie  | 3        | 714  | 0    | 714      | 16           |
| Bandera    | 2        | 10   | 624  | 634      | 17           |
| McLennan   | 3        | 173  | 446  | 619      | 18           |
| Brazoria   | 2        | 311  | 281  | 592      | 16           |

**Overall County Activity** – The following series of charts shows the activity from an overall QSO party “counties on the air” perspective. The first chart shows number of counties active in each hour and the second chart the cumulative number of different counties activated since the start of the party.

## Texas QSO Party - 2018



The following chart shows the cumulative number of different counties activated since the start of the party, comparing the results to those of 2017 and 2016.



It is interesting to see where the loss of activated counties occurred. The table and map below shows the counties that were inactive in 2018. The counties shown with \* were also inactive in 2017.

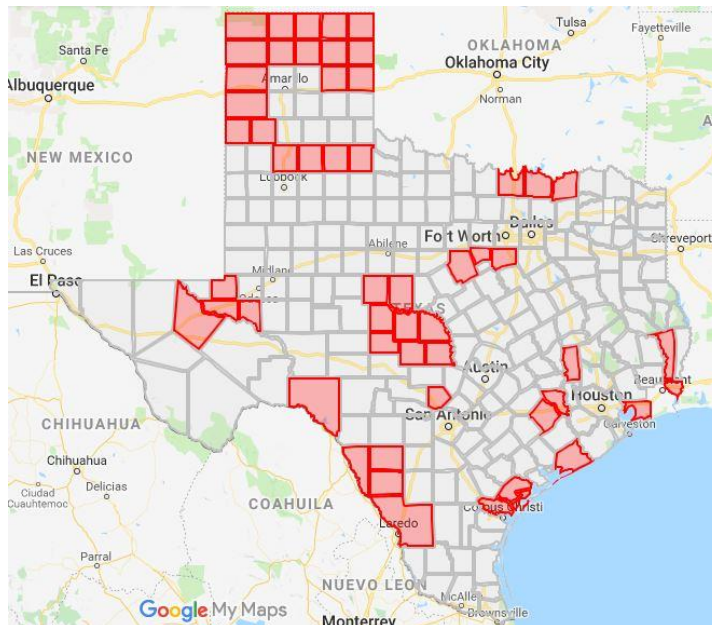


# Texas QSO Party - 2018

## Inactive Counties - 2018

|            |            |            |               |
|------------|------------|------------|---------------|
| Aransas*   | Fannin     | Lipscomb   | Refugio*      |
| Austin     | Floyd      | Llano      | Roberts       |
| Castro     | Gray       | Mason      | Runnels       |
| Chambers*  | Grimes     | Matagorda* | Sherman       |
| Coleman    | Grayson    | Maverick*  | San Patricio* |
| Colorado   | Hale       | McCulloch  | San Saba      |
| Concho     | Hansford   | Menard     | Val Verde*    |
| Cooke      | Hartley    | Moore      | Ward          |
| Cottle     | Hemphill   | Motley     | Webb*         |
| Crane      | Hood*      | Ochiltree  | Wheeler       |
| Dallam     | Hutchinson | Oldham     | Winkler       |
| Dimmit     | Jasper     | Orange*    | Zavala        |
| Deaf Smith | Johnson*   | Parmer     |               |
| Erath*     | Kendall    | Reeves*    |               |

\*Indicates the county was also inactive in 2017

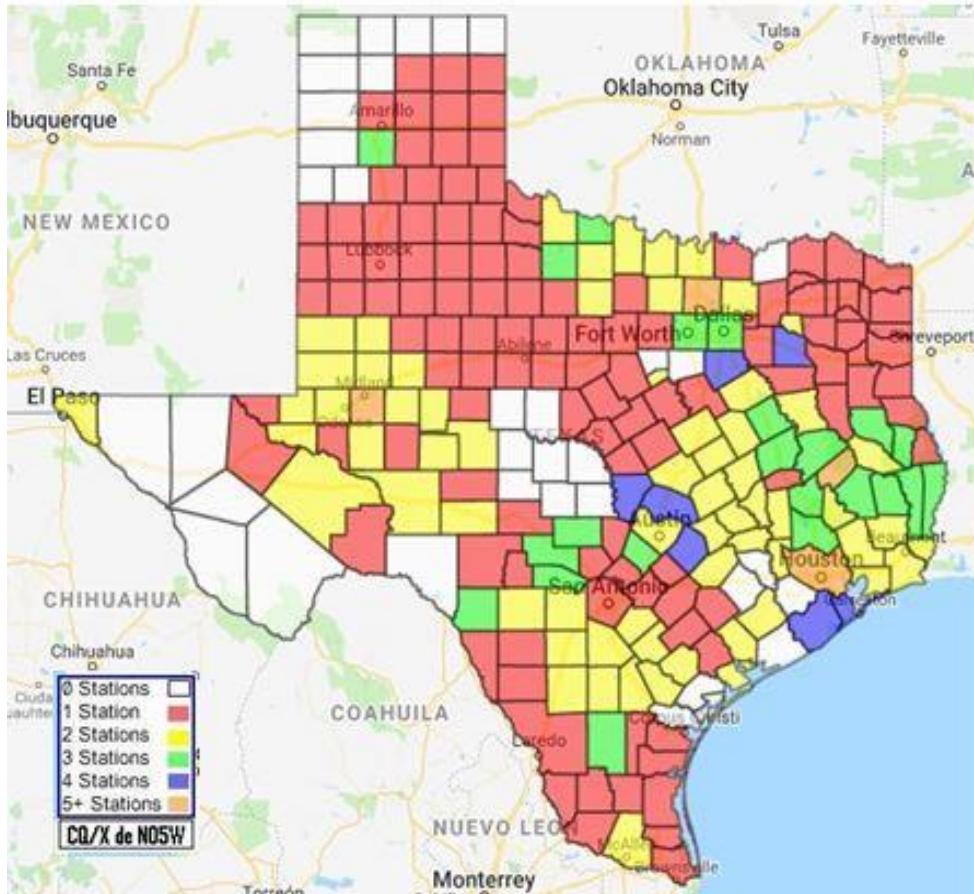


Counties that were inactive in 2018

**County Coverage and Coordination** – While the above chart indicates where we fell short again from our yearly goal of activating all 254 counties activation of 200 counties still represents a significant achievement. With 254 counties to activate and with more than a few of those counties containing no active HF operators mobile operation becomes an important part of the strategy for activating all the counties. And with a limited number of mobiles an important part of the strategy is coordinating (another term for pleading, begging, cajoling, and arm-twisting) to the extent possible, which mobiles will go where. For this we make use of Google Maps to publish known plans in the last month or so

# Texas QSO Party - 2018

during the run-up to the party. Mobiles are requested to consult maps of the following type, accessible from the TQP website, when making their plans and to see if perhaps a small tweak in their planned route could help activate an additional county or two. As indicated on the legend counties colored red are those that have only one station planning to operate from there and that the counties colored white have no announced plans for activation, and so forth.



Map Showing Planned Activity in the 2017 TQP

Click [here](#) for a live web version of the map

Comparing the planned activity to the inactive counties map we see that of the 54 counties missed, 25 of them had indicated beforehand that they would be on the air. While an indication beforehand is, of course not binding, and things happen to change plans, it is important for the Texas stations to be careful in assessing their ability to cover the counties that they claim to activate. The counties that were planned to be active but were not are:

### Counties Planned to be Active But Were Not

|          |         |          |         |
|----------|---------|----------|---------|
| Chambers | Gray    | Kendall  | Webb    |
| Cooke    | Grimes  | Maverick | Wheeler |
| Cottle   | Grayson | Motley   | Winkler |
| Crane    | Hale    | Orange   | Zavala  |

## Texas QSO Party - 2018

---

|        |            |         |
|--------|------------|---------|
| Dimmit | Hemphill   | Reeves  |
| Erath  | Hutchinson | Roberts |
| Floyd  | Jasper     | Ward    |

**The Log Checking Process** – Finally, here is a brief overview of the log checking process. If your score published in the score listings isn't exactly what you thought it should be here is where you may have lost some QSOs and in some cases a multiplier or two.

1. Each received log is reviewed for proper format and where necessary converted to a standard Cabrillo format and imported into a SQL database (MySQL).
2. A PHP script is run against the database with the goal of matching up QSOs from each log with corresponding QSOs from the other log. Matching is done on the basis of Band, Mode, Call, Sent QTH, and Received QTH. The output of this script is a set of three files for each submitted entry
  - a. **Verified log file** - this is a file containing all of the QSOs for which a matching QSO was found in the other submitted log and it is the file that will eventually be scored after the review of the following two files is complete.
  - b. **NIL file** – this is a file containing those QSOs for which a matching QSO was not found in the other submitted logs
  - c. **Uniques file** – this is a file containing all of the QSOs with stations that did not submit a log and whose call does not appear in any other submitted logs
3. Using software-assisted manual review (there is software to help but a person is also involved), each QSO in the NIL file for each entry is reviewed to determine why no matching QSO was found. If it is determined that the failure to find a match was due to a logging error by the other station the QSO is put back into the Verified log file for the current log being reviewed. Otherwise the QSO is held out.
4. Using software-assisted manual review each QSO in the Uniques file for each entry is reviewed to determine if the call logged is a busted version of a call from a station that submitted a log. If it is not determined to be a busted call then the QSO is put back into the Verified log file.
5. Upon completion of the above steps for all of the submitted logs an automated process is run to score all of the Verified Log Files.

Note: You may request a copy of the above three files and the resulting analysis for your entry by sending an email to [no5w.chuck@gmail.com](mailto:no5w.chuck@gmail.com).

**Some Common Logging Problems** – Here are some common score-reducing problems to avoid

1. Failure to use the correct abbreviation when logging a Texas county or a US state. Examples here would be logging JACK when working someone in Jackson (JKSN) County, logging COMA when working someone in Comal (COML), logging MONT when working someone in Montgomery (MGMY). There is a JACK County whose abbreviation is JACK, COMA is the abbreviation for Comanche County, and MONT is the abbreviation for Montague County.
2. Sending the wrong abbreviation for a county you are in. Prime examples are sending MONT when you are in Montgomery (MGMY), and sending COMA when you are in Comal (COML), or just plain sending an abbreviation you thought would work. Please review the list of county abbreviations prior to the party.

## Texas QSO Party - 2018

---

3. Failure to check that your logging program has correctly recorded your sent information. A prime example here is Texas users of N1MM failing to note that the program logged the sent QTH as TX or TEXAS rather than the county that you actually sent. This usually does not result in loss of points since logs having this problem are returned to sender for correction. But it creates additional work for the log checkers – not a good thing.
4. Failure to log the correct QTH when working a DX station. Texas stations receive multiplier credit for each DX entity worked so contacts with DX stations should be logged with the primary prefix of the DX entity. For example DX is not a valid QTH when working DL3DXX but DL is; similarly if you work SP9LJD the correct QTH to log is SP.
5. Failure to log the correct band or mode on which the QSO took place. Since it is not possible to conclusively determine which of the two stations caused the mismatch these QSOs are put back. However, it could still result in loss of points for example if you work a station on 40m and 80m but log both of the QSOs as having taken place on 40 then you will only get credit for one of the QSOs since the other one is a dupe due to the logging error. These problems are easily avoided by interfacing your radio and logging program.
6. When submitting your log be sure to include your call and your category in the subject line of the email. In case it is necessary to review the email submission of NO5XYZ during the log checking process it is a lot easier to find the email submitted by NO5XYZ than it is to find the email of Joe Ham who happens to be NO5XYZ. Including your category is particularly important for QRP operators since it is not possible to determine, just from the log entries, whether a station was QRP or not.
7. Finally be sure that your logging program has your call correct. That's right, your call. One operator who has an "oh" in his call (not NO5W!) typed a zero instead so his call in the log file name as well as in the log itself came out KA60YZ and it took a choir of log checkers a good half hour to figure out why that operators log was not showing up in the results – not a good thing.

**Conclusion** – During this report we have pointed out several times that activity levels were not as high in 2018 as they have been in the past. This, of course, can be partly due to the Sun creating poor conditions not conducive to great participation. We can't do much about the Sun and probably should plan on several more years of poor conditions as we go through the trough of the sunspot cycle. We can, however, do something about creating more interest in the party, and it must start with Texas operators since we are the focus of the party. If you enjoy the TQP you should get out and do some recruiting on your own. Talk it up at your club, at any ham fest you attend, etc. The TQP can always use more mobiles and mobile operation can be a lot of fun as you motor around the state and as you cross into each new county working down the pileup. So consider going mobile in the future, preferably with a driver/co-operator.

So that's the 2018 Texas QSO Party story. If necessary you can help revise the story if you find any errors, like the report having you in the wrong club or category. In that case drop us an email at our QRZ address and we will review the submitted logs and make any valid corrections. Thanks to all who took the time to participate in the 2018 Texas QSO Party. We hope you had fun and will be able to participate again in 2019.

73/Chuck/NO5W

## Texas QSO Party - 2018

---

### Revision History

Rev 0.0: Original draft – December 28, 2018

Rev 1.0: Revision

- Added result for K4VBM

Rev 2.0: Revision

- Corrected the category of W5RRR from Texas SO Mixed to Texas Multi-Op

Rev 3.0: Revision

- Corrected the category of NU5DE from Texas Multi-Op to Texas SO Phone-Only