

Revision 0.0
February 22, 2022



Texas DX Society

Texas QSO Party 2021 Results

Prepared by:
Chuck – NO5W

Texas QSO Party - 2021

Contents

Section 1: Introduction	4
Section 2: US-Canada (Non-Texas) Individual Player Scores	5
Section 2.1: Non-Texas Single Op CW Only Category	5
Section 2.2: Non-Texas Single Op Phone Only Category	9
Section 2.3: Non-Texas Single Op Mixed Mode Category	11
Section 2.4: Non-Texas Single Op QRP Category	14
Section 3: DX Single Op Scores	15
Section 4: Texas Individual Player Scores	16
Section 4.1: Texas Single Op CW Only Low-Power Category	16
Section 4.2: Texas Single Op CW Only High-Power Category	18
Section 4.3: Texas Single Op Phone Only Low-Power Category	19
Section 4.4: Texas Single Op Phone Only High-Power Category	21
Section 4.5: Texas Single Op Mixed-Mode Low-Power Category	22
Section 4.6: Texas Single Op Mixed-Mode High-Power Category	23
Section 4.7: Texas Single Op QRP Category	24
Section 4.8: Texas Mobile Single Op CW Only Category	25
Section 4.9: Texas Mobile Single Op Phone Only Category	26
Section 4.10: Texas Mobile Single Op Mixed Mode Category	26
Section 4.11: Texas Mobile Multi-Op Category	27
Section 4.12: Texas Multi-Op High Power Category	27
Section 4.13: Texas Multi-Op Low Power Category	28
Section 5: Texas Club Aggregate Results	29
Section 5.1: Summary	29
Section 5.2: Texas Club Detailed Results	30
Section 6: Some Statistics from the Logs	34
Section 6.1: Logs Received	34
Section 6.2: Band Statistics:	35
Section 6.3: Mode Statistics:	35
Section 6.4: QSO Destination:	35
Section 6.5: Butt-in-Chair Stations	36

Texas QSO Party - 2021

Section 6.6: Activity Levels.....	36
Section 6.6.1: Station Activity	36
Section 6.6.2: County Activity	37
Section 6.6.3: County Coverage and Coordination	40
Section 7: Log Submission Tips – Here are some tips to make the log submission go easier for the entrant as well as the log processor.	42
Section 8: Conclusion	43
Section 9: Revision History.....	44

Texas QSO Party - 2021

Section 1: Introduction

This report summarizes the results of the 2021 Texas QSO Party including individual scores in each category and a comparison to the top scores in 2019-20, Texas club aggregate scores, analysis of the participation levels, and a summary of the county activity.

In reading the following score tables the entry categories are abbreviated with the following codes:

Category Code	Category Description
NTX SO CWO	Non-Texas (US/Canadian) Single Operator CW Only
NTX SO PHO	Non-Texas (US/Canadian) Single Operator Phone Only
NTX SO	Non-Texas (US/Canadian) Single Operator Mixed Mode
NTX SO QRP	Non-Texas (US/Canadian) Single Operator QRP
DX SO	DX (non-US/Canadian) Single Operator (Mixed Mode)
TX CWO SO	Texas CW Only Single Operator (split into LP and HP in 2019)
TX CWO SO LP	Texas CW Only Single Operator Low Power (introduced in 2019)
TX CWO SO HP	Texas CW Only Single Operator High Power (introduced in 2019)
TX PHO SO	Texas Phone Only Single Operator (split into LP and HP in 2019)
TX PHO SO LP	Texas Phone Only Single Operator Low Power (introduced in 2019)
TX PHO SO HP	Texas Phone Only Single Operator High Power (introduced in 2019)
TX SO MIX	Texas Single Operator Mixed Mode (split into LP and HP in 2019)
TX SO MIX LP	Texas Single Operator Mixed Mode Low Power (introduced in 2019)
TX SO MIX HP	Texas Single Operator Mixed Mode High Power (introduced in 2019)
TX SO QRP	Texas Single Operator QRP
TXM SO CWO	Texas Mobile Single Operator CW Only
TXM SO PHO	Texas Mobile Single Operator Phone Only
TXM SO	Texas Mobile Single Operator Mixed Mode
TXM MO	Texas Mobile Multi-Operator
TX MO	Texas Multi-Operator (split into LP and HP in 2019)
TX MO LP	Texas Multi-Operator Low Power (introduced in 2019)
TX MO HP	Texas Multi-Operator High Power (introduced in 2019)

In the following tables Score* is the score before applying any bonus whereas Final Score includes the total bonus which is the sum of the following two types of bonus points available in the TQP.

- **Mobile County Activation Bonus (CAB)** – Each county from which a mobile makes five or more contacts earns the mobile a bonus of 1000 points. This bonus is only available to mobile operators.
- **Mobile Tracking Bonus (MTB)** – For any station, fixed or mobile, a bonus of 500 points is awarded for each group of five different counties that the station has a QSO with a given mobile.

Texas QSO Party - 2021

Section 2: US-Canada (Non-Texas) Individual Player Scores

Section 2.1: Non-Texas Single Op CW Only Category - The NTX-SO-CWO category is one of the most popular categories with 128 logs received in 2021. One reason for that popularity is simply that CW is where the action is with several excellent and very active TQP mobiles that tend to focus most of their activity riding the continuous waves. Looking at the last three years reveals a steady increase in the number of QSOs required to finish in the top three in this category with nearly 300 Qs required in 2021.

And speaking of steady, you will also note that John-N6MU has been a steady finisher in the top three managing to maintain presence in the top two from his modest (vertical and wires) station in Southern California even with stiff competition from Mark-WB9CIF in 2020-21. There's always the question of whether to pursue multipliers or QSOs and you can see that WB9CIF led in the QSO count by enough margin to overcome the larger multiplier count found by N6MU and N6MU's larger Mobile Tracking bonus. Congratulations and a big thank you to WB9CIF, N6MU, and W5TM for their top three finishes and for their support of TQP.

2019 Top Three Scores in NTX SO CWO							
Call	Category	CWQs	QSO Points	Mults	Score*	Bonus	Total Score
N6MU	NTX SO CWO	217	651	125	81375	10500	91875
W5TM	NTX SO CWO	230	690	109	75210	6500	81710
K4AMC	NTX SO CWO	209	627	113	70851	7500	78351
2020 Top Three Scores in NTX SO CWO							
Call	Category	CWQs	QSO Points	Mults	Score*	Bonus	Total Score
WB9CIF	NTX SO CWO	268	804	139	111756	10500	122256
N6MU	NTX SO CWO	227	681	144	98064	11000	109064
K9CW	NTX SO CWO	210	630	120	75600	8000	83600
2021 Top Three Scores in NTX SO CWO							
Call	Category	CWQs	QSO Points	Mults	Score*	Bonus	Total Score
WB9CIF	NTX SO CWO	291	873	129	112617	12500	125117
N6MU	NTX SO CWO	237	711	134	95274	13500	108774
W5TM	NTX SO CWO	222	666	116	77256	10000	87256

The following table lists all the scores in the NT SO CWO category. As mentioned previously, 128 logs were received in this category. The average number of QSOs was 54 and the average number of multipliers was about 33. It's interesting to note that, for the top ten finishers, the bonus did not change the rank. A top ten finish required about 140 Qs coupled with about 80 Mults and the minimum top ten finisher required a score of about 32% of the top score whereas the third place required a score of about 70% of the top score.

Texas QSO Party - 2021

All Scores 2021 Non-Texas Single Op CW Only Category							
Call	Category	CWQs	QSO Points	Mults	Score*	Bonus	Final Score
WB9CIF	NTX SO CWO	291	873	129	112617	12500	125117
N6MU	NTX SO CWO	237	711	134	95274	13500	108774
W5TM	NTX SO CWO	222	666	116	77256	10000	87256
K5ZE	NTX SO CWO	152	456	115	52440	8500	60940
N7US	NTX SO CWO	181	543	86	46698	5000	51698
K9CW	NTX SO CWO	168	504	88	44352	5000	49352
W6SX	NTX SO CWO	153	459	90	41310	2500	43810
K1RO	NTX SO CWO	137	411	86	35346	7000	42346
NW0M	NTX SO CWO	138	414	84	34776	6500	41276
VE2FK	NTX SO CWO	146	438	79	34602	6000	40602
W8PI	NTX SO CWO	142	426	80	34080	5000	39080
KE8PX	NTX SO CWO	118	354	68	24072	4500	28572
K3IE	NTX SO CWO	117	351	68	23868	4500	28368
N8BJQ	NTX SO CWO	115	345	70	24150	2500	26650
K8JQ	NTX SO CWO	135	405	59	23895	2500	26395
K4RUM	NTX SO CWO	122	366	61	22326	4000	26326
K9NW	NTX SO CWO	125	375	56	21000	2500	23500
W4NZ	NTX SO CWO	115	345	60	20700	2500	23200
W9ILY	NTX SO CWO	111	333	63	20979	2000	22979
W8BZY	NTX SO CWO	108	324	63	20412	2500	22912
K3QP	NTX SO CWO	106	318	60	19080	3500	22580
K4AMC	NTX SO CWO	94	282	62	17484	2500	19984
K4WW	NTX SO CWO	100	300	58	17400	2500	19900
K0WRY	NTX SO CWO	88	264	61	16104	2500	18604
K9GDF	NTX SO CWO	95	285	53	15105	1000	16105
W3WHK	NTX SO CWO	87	261	53	13833	2000	15833
K3YP	NTX SO CWO	79	237	51	12087	2000	14087
NK4O	NTX SO CWO	83	249	47	11703	2000	13703
W8FN	NTX SO CWO	85	255	49	12495	1000	13495
W1QK	NTX SO CWO	87	261	47	12267	1000	13267
N2RC	NTX SO CWO	69	207	47	9729	3500	13229
W0UY	NTX SO CWO	77	231	50	11550	1500	13050
K6RB	NTX SO CWO	62	186	50	9300	2500	11800
K0TC	NTX SO CWO	77	231	48	11088	500	11588
W6NKR	NTX SO CWO	65	195	46	8970	1500	10470
K4ORD	NTX SO CWO	76	228	41	9348	1000	10348
N3CKI	NTX SO CWO	67	201	45	9045	1000	10045
K8WWS	NTX SO CWO	84	252	39	9828	0	9828
N5EP	NTX SO CWO	63	189	40	7560	500	8060

Texas QSO Party - 2021

AI4WW	NTX SO CWO	56	168	39	6552	1000	7552
N6GP	NTX SO CWO	55	165	39	6435	1000	7435
N4DPM	NTX SO CWO	60	180	37	6660	500	7160
VE3AQ	NTX SO CWO	57	171	37	6327	500	6827
N4NTO	NTX SO CWO	49	147	38	5586	1000	6586
KA0PQW	NTX SO CWO	62	186	34	6324	0	6324
W3TB	NTX SO CWO	60	180	35	6300	0	6300
KD9OIN	NTX SO CWO	58	174	36	6264	0	6264
W7GF	NTX SO CWO	42	126	36	4536	1500	6036
K4GM	NTX SO CWO	55	165	35	5775	0	5775
W3GQ	NTX SO CWO	52	156	33	5148	500	5648
W1ARY	NTX SO CWO	42	126	33	4158	1000	5158
K8LX	NTX SO CWO	49	147	31	4557	500	5057
K7WP	NTX SO CWO	50	150	33	4950	0	4950
N5ZO	NTX SO CWO	46	138	34	4692	0	4692
K2MK	NTX SO CWO	47	141	33	4653	0	4653
AA0CL	NTX SO CWO	46	138	30	4140	500	4640
N3KN	NTX SO CWO	45	135	33	4455	0	4455
KE0L	NTX SO CWO	37	111	30	3330	1000	4330
W4SPR	NTX SO CWO	42	126	31	3906	0	3906
KC8J	NTX SO CWO	37	111	28	3108	500	3608
W2QL	NTX SO CWO	39	117	29	3393	0	3393
K8GT	NTX SO CWO	41	123	27	3321	0	3321
WA3FAE	NTX SO CWO	44	132	25	3300	0	3300
AA4DD	NTX SO CWO	35	105	30	3150	0	3150
K0PC	NTX SO CWO	38	114	27	3078	0	3078
VE3KP	NTX SO CWO	32	96	25	2400	500	2900
K1DJ	NTX SO CWO	39	117	23	2691	0	2691
VE3EJ	NTX SO CWO	34	102	26	2652	0	2652
W8EWH	NTX SO CWO	39	117	22	2574	0	2574
NF8M	NTX SO CWO	32	96	24	2304	0	2304
VE3PQ	NTX SO CWO	33	99	23	2277	0	2277
N9HDE	NTX SO CWO	36	108	21	2268	0	2268
K7ZYV	NTX SO CWO	29	87	25	2175	0	2175
K1VUT	NTX SO CWO	36	108	20	2160	0	2160
KC7V	NTX SO CWO	29	87	24	2088	0	2088
K2NV/2	NTX SO CWO	30	90	21	1890	0	1890
KN4JN	NTX SO CWO	30	90	21	1890	0	1890
K2AL	NTX SO CWO	24	72	19	1368	500	1868
K3ZGA	NTX SO CWO	31	93	20	1860	0	1860
N3IW	NTX SO CWO	30	90	20	1800	0	1800

Texas QSO Party - 2021

KC2WUF	NTX SO CWO	28	84	21	1764	0	1764
AI6O	NTX SO CWO	24	72	22	1584	0	1584
KF3G	NTX SO CWO	26	78	19	1482	0	1482
N8RW	NTX SO CWO	27	81	18	1458	0	1458
VE7IO	NTX SO CWO	23	69	21	1449	0	1449
KA3EHL	NTX SO CWO	26	78	17	1326	0	1326
WA2ZDM	NTX SO CWO	23	69	19	1311	0	1311
W4CMG	NTX SO CWO	25	75	17	1275	0	1275
K5VWW	NTX SO CWO	22	66	19	1254	0	1254
K6KQV	NTX SO CWO	21	63	17	1071	0	1071
W1END	NTX SO CWO	23	69	15	1035	0	1035
KR2AA	NTX SO CWO	20	60	16	960	0	960
K0JP	NTX SO CWO	19	57	16	912	0	912
WI6X	NTX SO CWO	18	54	15	810	0	810
KI2D	NTX SO CWO	18	54	14	756	0	756
W6GMT	NTX SO CWO	17	51	14	714	0	714
VE5MX	NTX SO CWO	16	48	14	672	0	672
WQ6X	NTX SO CWO	16	48	14	672	0	672
AA8TA	NTX SO CWO	17	51	13	663	0	663
K8MR	NTX SO CWO	17	51	13	663	0	663
VA3FN	NTX SO CWO	16	48	13	624	0	624
N7VS	NTX SO CWO	13	39	12	468	0	468
K2QB	NTX SO CWO	12	36	12	432	0	432
K6CSL	NTX SO CWO	12	36	12	432	0	432
NY9P	NTX SO CWO	13	39	10	390	0	390
KN4YRM	NTX SO CWO	11	33	11	363	0	363
N0SMX	NTX SO CWO	11	33	11	363	0	363
KW4GF	NTX SO CWO	11	33	10	330	0	330
W4ZPR	NTX SO CWO	12	36	9	324	0	324
N1SOH	NTX SO CWO	10	30	10	300	0	300
W1FM	NTX SO CWO	10	30	10	300	0	300
W5LA	NTX SO CWO	11	33	9	297	0	297
KB4DE	NTX SO CWO	12	36	8	288	0	288
WA9LEY	NTX SO CWO	9	27	9	243	0	243
NJ8J	NTX SO CWO	10	30	8	240	0	240
AG7CC	NTX SO CWO	8	24	8	192	0	192
W7VC	NTX SO CWO	9	27	7	189	0	189
K2HT	NTX SO CWO	7	21	7	147	0	147
KX1W	NTX SO CWO	7	21	7	147	0	147
KA1IOR	NTX SO CWO	5	15	5	75	0	75
KB7AK	NTX SO CWO	5	15	5	75	0	75

Texas QSO Party - 2021

WA3AAN	NTX SO CWO	5	15	5	75	0	75
CT7AIX	NTX SO CWO	5	15	4	60	0	60
PA3ARM	NTX SO CWO	4	12	4	48	0	48
KD2KEH	NTX SO CWO	4	12	3	36	0	36
K1ECU	NTX SO CWO	3	9	3	27	0	27
KC7YE	NTX SO CWO	3	9	3	27	0	27
N1CEO	NTX SO CWO	1	3	1	3	0	3

Section 2.2: Non-Texas Single Op Phone Only Category – This category has seen a regular presence of W6AFA in the top two positions chased alternately by KK7AC and N6OKU. This year N6OKU came out on top due to his higher multiplier count. The spread between the top two finishers was less than 1% and was one of the closest races over all categories.

2019 Top Three Scores in NTX SO PHO							
Call	Category	PHQs	QsoPts	Mults	Score*	Bonus	Final Score
KK7AC	NTX SO PHO	225	450	93	41850	2500	44350
W6AFA	NTX SO PHO	143	286	69	19734	0	19734
N5XTR	NTX SO PHO	53	106	40	4240	500	4740
2020 Top Three Scores in NTX SO PHO							
Call	Category	PHQs	QsoPts	Mults	Score*	Bonus	Final Score
W6AFA	NTX SO PHO	265	530	106	56180	1000	57180
N6OKU	NTX SO PHO	136	272	67	18224	500	18724
KK7AC	NTX SO PHO	87	174	70	12180	1000	13180
2021 Top Three Scores in NTX SO PHO							
Call	Category	PHQs	QsoPts	Mults	Score*	Bonus	Final Score
N6OKU	NTX SO PHO	269	538	109	58642	2500	61142
W6AFA	NTX SO PHO	270	540	106	57240	3500	60740
KK7AC	NTX SO PHO	124	248	75	18600	2000	20600

Here are all the scores in the Non-Texas Single Operator Phone Only category. There were 71 logs received in NTX SO PHO. Scores fall off rapidly after the top two scores with the third-place finisher having a score that is only within 70% of the top score.

All Scores 2021 Non-Texas Single Op Phone Only Category							
Call	Category	PHQs	QSO Pts	Mults	Score*	Bonus	Final Score
N6OKU	NTX SO PHO	269	538	109	58642	2500	61142
W6AFA	NTX SO PHO	270	540	106	57240	3500	60740
KK7AC	NTX SO PHO	124	248	75	18600	2000	20600
N5XTR	NTX SO PHO	46	92	40	3680	500	4180
WA1SAY	NTX SO PHO	29	58	24	1392	1000	2392

Texas QSO Party - 2021

K4QQG	NTX SO PHO	39	78	28	2184	0	2184
WD4FMG	NTX SO PHO	30	60	25	1500	500	2000
WW5L	NTX SO PHO	30	60	24	1440	0	1440
VA3PC	NTX SO PHO	21	42	20	840	500	1340
N5MKY	NTX SO PHO	21	42	19	798	500	1298
W9TCV	NTX SO PHO	22	44	18	792	500	1292
AB1A	NTX SO PHO	27	54	22	1188	0	1188
W0JMW	NTX SO PHO	25	50	23	1150	0	1150
AJ4LN	NTX SO PHO	18	36	16	576	500	1076
N3DUE	NTX SO PHO	24	48	21	1008	0	1008
N2OMD	NTX SO PHO	26	52	19	988	0	988
KD9LVR	NTX SO PHO	24	48	20	960	0	960
K1LOK	NTX SO PHO	21	42	19	798	0	798
KJ9B	NTX SO PHO	20	40	18	720	0	720
KM4IAJ	NTX SO PHO	17	34	16	544	0	544
K7JSG	NTX SO PHO	18	36	14	504	0	504
W9VTD	NTX SO PHO	16	32	12	384	0	384
N3SET	NTX SO PHO	14	28	13	364	0	364
KD9GY	NTX SO PHO	14	28	12	336	0	336
KB9LGS	NTX SO PHO	13	26	12	312	0	312
K6TQ	NTX SO PHO	12	24	12	288	0	288
KE6GFI	NTX SO PHO	13	26	11	286	0	286
KE8VU	NTX SO PHO	13	26	11	286	0	286
KD9NHZ	NTX SO PHO	12	24	11	264	0	264
W4YPW	NTX SO PHO	11	22	10	220	0	220
WA9PND	NTX SO PHO	10	20	9	180	0	180
W0COE	NTX SO PHO	11	22	8	176	0	176
W7KAM	NTX SO PHO	10	20	8	160	0	160
K4SBZ	NTX SO PHO	9	18	8	144	0	144
KA4FVE	NTX SO PHO	9	18	8	144	0	144
KJ4KKD	NTX SO PHO	9	18	8	144	0	144
KB9RKK	NTX SO PHO	8	16	8	128	0	128
KG4SRK	NTX SO PHO	8	16	8	128	0	128
AB1F	NTX SO PHO	9	18	7	126	0	126
NY1E	NTX SO PHO	9	18	7	126	0	126
ND0TS	NTX SO PHO	7	14	7	98	0	98
VE3HZ	NTX SO PHO	6	12	6	72	0	72
WA4JA	NTX SO PHO	6	12	6	72	0	72
KC0EDE	NTX SO PHO	5	10	5	50	0	50
N9JPG	NTX SO PHO	5	10	5	50	0	50
WM5LA	NTX SO PHO	5	10	5	50	0	50

Texas QSO Party - 2021

WY7AA	NTX SO PHO	5	10	5	50	0	50
WB5WAJ	NTX SO PHO	6	12	4	48	0	48
KD5ILA	NTX SO PHO	4	8	4	32	0	32
W2UDT	NTX SO PHO	4	8	4	32	0	32
K8NW	NTX SO PHO	3	6	3	18	0	18
KJ7DHY	NTX SO PHO	3	6	3	18	0	18
N1ADX	NTX SO PHO	3	6	3	18	0	18
VE9RLW	NTX SO PHO	3	6	3	18	0	18
W3TXG	NTX SO PHO	3	6	3	18	0	18
W4BTW	NTX SO PHO	3	6	3	18	0	18
W6JLV	NTX SO PHO	3	6	3	18	0	18
AB1XQ	NTX SO PHO	2	4	2	8	0	8
K9ELF	NTX SO PHO	2	4	2	8	0	8
KA4RIV	NTX SO PHO	2	4	2	8	0	8
KF8MZ	NTX SO PHO	2	4	2	8	0	8
KK4CS	NTX SO PHO	2	4	2	8	0	8
N4BMX	NTX SO PHO	2	4	2	8	0	8
N8PPF	NTX SO PHO	2	4	2	8	0	8
W6US	NTX SO PHO	2	4	2	8	0	8
N1IBQ	NTX SO PHO	2	4	1	4	0	4
AJ3M	NTX SO PHO	1	2	1	2	0	2
N6JSO	NTX SO PHO	1	2	1	2	0	2
W2VDZ	NTX SO PHO	1	2	1	2	0	2
W7LTE	NTX SO PHO	1	2	1	2	0	2
WE5TR	NTX SO PHO	1	2	1	2	0	2

Section 2.3: Non-Texas Single Op Mixed Mode Category – Top slots in this category have been occupied by Frank-WA6KHK and Jeff-N8II with a “visitor” jumping in to join the two stalwarts. This year that visitor was Axel-KI6RRN who had the best score in this category over the past three years primarily due to an excellent number of phone Qs coupled with a competitive number of CW Qs. He has certainly set a high bar for this category going forward. Congratulations to KI6RRN and a big thank you to WA6KHK and N8II for their continued support of TQP

2019 Top Three Scores in NTX SO MIX								
Call	Category	CWQs	PHQs	QsoPts	Mults	Score*	Bonus	Final Score
WA6KHK	NTX SO MIX	190	154	878	147	129066	10000	139066
W6OAT	NTX SO MIX	249	46	839	147	123333	13000	136333
N8II	NTX SO MIX	182	119	784	125	98000	8500	106500
2020 Top Three Scores in NTX SO MIX								
Call	Category	CWQs	PHQs	QsoPts	Mults	Score*	Bonus	Final Score

Texas QSO Party - 2021

K1RO	NTX SO MIX	303	96	1101	176	193776	15000	208776
N8II	NTX SO MIX	248	217	1178	167	196726	10500	207226
WA6KHK	NTX SO MIX	218	209	1072	174	186528	12000	198528
2021 Top Three Scores in NTX SO MIX								
Call	Category	CWQs	PHQs	QsoPts	Mults	Score*	Bonus	Final Score
KI6RRN	NTX SO MIX	296	399	1686	162	273132	13000	286132
WA6KHK	NTX SO MIX	171	197	907	154	139678	12000	151678
N8II	NTX SO MIX	219	172	1001	141	141141	10000	151141

There were 90 logs received in the NT SO (MIX) category. Review of the following results shows that the top three finishers had rather balanced CW vs Phone results but after that most of the entrants tended to focus on CW as suggested by the average number of CW Qs being 72 and average number of Phone Qs 19.

All Scores 2021 Non-Texas-Single Op Mixed Category								
Call	Category	CWQs	PHQs	QsoPts	Mults	Score*	Bonus	Final Score
KI6RRN	NTX SO	296	399	1686	162	273132	13000	286132
WA6KHK	NTX SO	171	197	907	154	139678	12000	151678
N8II	NTX SO	219	172	1001	141	141141	10000	151141
KA6BIM	NTX SO	209	59	745	141	105045	11000	116045
NT6X	NTX SO	221	33	729	123	89667	10000	99667
NS2N	NTX SO	228	33	750	112	84000	10500	94500
K8QKY	NTX SO	218	16	686	115	78890	10000	88890
K3WJV	NTX SO	212	26	688	104	71552	7500	79052
KE4Q	NTX SO	192	25	626	105	65730	8000	73730
AA4TI	NTX SO	184	35	622	105	65310	8000	73310
K5XS	NTX SO	130	26	442	102	45084	5500	50584
W0PI	NTX SO	161	34	551	82	45182	4500	49682
WB9HFK	NTX SO	162	4	494	86	42484	5500	47984
W0BH	NTX SO	111	42	417	92	38364	5500	43864
N3XF	NTX SO	142	19	464	72	33408	4000	37408
W04O	NTX SO	117	19	389	75	29175	4000	33175
N6TQ	NTX SO	119	14	385	71	27335	4000	31335
W6TED	NTX SO	117	2	355	77	27335	4000	31335
WN4AFP	NTX SO	119	2	361	69	24909	4500	29409
W2XYZ	NTX SO	123	9	387	69	26703	2000	28703
W3LL	NTX SO	112	18	372	60	22320	3000	25320
W4EE	NTX SO	100	11	322	65	20930	4000	24930
KV0I	NTX SO	105	19	353	68	24004	0	24004
W4SSF	NTX SO	96	9	306	56	17136	1500	18636

Texas QSO Party - 2021

WA8KAN	NTX SO	85	29	313	56	17528	1000	18528
AD1C	NTX SO	92	7	290	60	17400	1000	18400
K6MM	NTX SO	72	4	224	63	14112	3000	17112
KB4CG	NTX SO	84	10	272	55	14960	1500	16460
K4DR	NTX SO	71	26	265	56	14840	1500	16340
K0AP	NTX SO	67	1	203	59	11977	4000	15977
KI0Y	NTX SO	74	11	244	57	13908	2000	15908
K4VBM	NTX SO	90	9	288	50	14400	1500	15900
K5ZG	NTX SO	74	8	238	55	13090	1000	14090
VE3WG	NTX SO	77	7	245	49	12005	1000	13005
W2TB	NTX SO	63	17	223	51	11373	1000	12373
KJ9C	NTX SO	65	12	219	53	11607	500	12107
VE5KS	NTX SO	55	10	185	52	9620	1500	11120
N4ARO	NTX SO	68	2	208	45	9360	1500	10860
K6NR	NTX SO	67	5	211	49	10339	500	10839
W1WBB	NTX SO	77	5	241	39	9399	1000	10399
W9QL	NTX SO	58	17	208	46	9568	500	10068
WA5SOG	NTX SO	64	13	218	42	9156	500	9656
VE7CV	NTX SO	53	2	163	46	7498	1000	8498
W0OR	NTX SO	60	3	186	41	7626	500	8126
K8RGI	NTX SO	64	8	208	38	7904	0	7904
NN2NN	NTX SO	58	9	192	38	7296	0	7296
AC3LZ	NTX SO	46	28	194	36	6984	0	6984
WA2JQK	NTX SO	53	12	183	34	6222	500	6722
W9MC	NTX SO	41	10	143	40	5720	500	6220
K4KEW	NTX SO	47	15	171	34	5814	0	5814
N8TFD	NTX SO	51	11	175	33	5775	0	5775
KB3LIX	NTX SO	54	2	166	32	5312	0	5312
NS4X	NTX SO	39	11	139	38	5282	0	5282
K2SD	NTX SO	44	5	142	34	4828	0	4828
W3HDH	NTX SO	46	2	142	34	4828	0	4828
KX4X	NTX SO	40	5	130	33	4290	500	4790
WB2WPM	NTX SO	44	1	134	32	4288	0	4288
N5UM	NTX SO	35	10	125	34	4250	0	4250
VE7BC	NTX SO	37	3	117	32	3744	0	3744
W3TNU	NTX SO	41	2	127	27	3429	0	3429
K9OZ	NTX SO	35	1	107	30	3210	0	3210
W8KNO	NTX SO	23	15	99	26	2574	0	2574
VE3AYR	NTX SO	35	1	107	24	2568	0	2568
NU4N	NTX SO	24	8	88	23	2024	0	2024
W3AVP	NTX SO	24	2	76	20	1520	500	2020

Texas QSO Party - 2021

KB7PKC	NTX SO	19	9	75	23	1725	0	1725
AB8OU	NTX SO	25	5	85	19	1615	0	1615
NU1O	NTX SO	2	30	66	24	1584	0	1584
AC0W	NTX SO	14	16	74	20	1480	0	1480
AA1SU	NTX SO	25	4	83	17	1411	0	1411
NR0P	NTX SO	16	8	64	21	1344	0	1344
AK2S	NTX SO	20	2	64	19	1216	0	1216
N4QI	NTX SO	19	2	61	18	1098	0	1098
KB5GI	NTX SO	15	5	55	19	1045	0	1045
K1BZ	NTX SO	18	2	58	14	812	0	812
K6BBQ	NTX SO	2	10	26	12	312	500	812
K0MPH	NTX SO	18	1	56	14	784	0	784
K3JSJ	NTX SO	12	7	50	15	750	0	750
OT6M	NTX SO	14	2	46	16	736	0	736
NS8O	NTX SO	12	3	42	14	588	0	588
PA3OES	NTX SO	12	1	38	13	494	0	494
WA8ZNC	NTX SO	11	4	41	12	492	0	492
K2SQS	NTX SO	7	7	35	14	490	0	490
WA6URY	NTX SO	13	1	41	11	451	0	451
K9WPV	NTX SO	3	11	31	11	341	0	341
W3MLK	NTX SO	7	5	31	11	341	0	341
N5KB	NTX SO	4	6	24	10	240	0	240
AC3D	NTX SO	3	5	19	6	114	0	114
K2QPN	NTX SO	4	1	14	5	70	0	70
K4XU	NTX SO	7	1	23	2	46	0	46

Section 2.4: Non-Texas Single Op QRP Category – Looking at the scores for the past three years in this category reveals that it is owned by Tom-K3TW operating out of his fine station in Lecanto, FL. Over the last three years six contenders have tried unsuccessfully to unseat K3TW. As one would suspect given it's the QRP category the focus for all participants has been on CW.

2019 Top Three Scores in NTX SO QRP								
Call	Category	CWQs	PHQs	QsoPts	Mults	Score*	Bonus	Final Score
K3TW	NTX SO QRP	122	17	400	78	31200	4000	35200
WD4CFN	NTX SO QRP	14	0	42	12	504	0	504
VE3DQN	NTX SO QRP	9	0	27	7	189	0	189
2020 Top Three Scores in NTX SO QRP								
Call	Category	CWQs	PHQs	QsoPts	Mults	Score*	Bonus	Final Score
K3TW	NTX SO QRP	94	16	314	72	22608	3000	25608
K8ZT	NTX SO QRP	38	12	138	37	5106	0	5106

Texas QSO Party - 2021

WB40MM	NTX SO QRP	39	2	121	31	3751	500	4251
2021 Top Three Scores in NTX SO QRP								
Call	Category	CWQs	PHQs	QsoPts	Mults	Score*	Bonus	Final Score
K3TW	NTX SO QRP	162	11	508	91	46228	6500	52728
N6MA	NTX SO QRP	54	0	162	39	6318	1000	7318
K2YG	NTX SO QRP	42	0	126	35	4410	500	4910

All Scores 2021 Non-Texas-Single Op QRP Category								
Call	Category	CWQs	PHQs	QsoPts	Mults	Score*	Bonus	Final Score
K3TW	NTX SO QRP	162	11	508	91	46228	6500	52728
N6MA	NTX SO QRP	54	0	162	39	6318	1000	7318
K2YG	NTX SO QRP	42	0	126	35	4410	500	4910
WD4CFN	NTX SO QRP	43	0	129	32	4128	500	4628
W7LG	NTX SO QRP	35	0	105	27	2835	500	3335
W4ER	NTX SO QRP	32	0	96	26	2496	0	2496
VE3DQN	NTX SO QRP	23	0	69	18	1242	0	1242
W8IQ	NTX SO QRP	20	0	60	15	900	0	900
KS4X	NTX SO QRP	17	0	51	16	816	0	816
K8ZT	NTX SO QRP	7	4	29	10	290	0	290
W9GPB	NTX SO QRP	0	7	14	7	98	0	98
VE3SIF	NTX SO QRP	0	8	16	6	96	0	96
WC7S	NTX SO QRP	6	0	18	5	90	0	90

Section 3: DX Single Op Scores – Here is another category where the scores have been steadily increasing over the past three years. Laci-OM2VL has always been an active participant in the TQP but this year he exceeded his previous efforts and blew away the competition with a full-bore effort. Dietmar-DL3DXX continues to reach the top three level with strong support for the TQP. Thanks to all the DX participants for supporting the TQP.

2019 Top Three Scores in DX SO								
Call	Category	CWQs	PHQs	QsoPts	Mults	Score*	Bonus	Final Score
DL3DXX	DX SO	173	0	519	109	56571	9000	65571
DL8USA	DX SO	59	0	177	54	9558	2000	11558
DL4FN	DX SO	26	0	78	21	1638	0	1638
2020 Top Three Scores in DX SO								
Call	Category	CWQs	PHQs	QsoPts	Mults	Score*	Bonus	Final Score
DL3DXX	DX SO	195	0	585	120	70200	9000	79200
DL8USA	DX SO	65	0	195	56	10920	2500	13420
DL6KVA	DX SO	14	0	42	13	546	0	546

Texas QSO Party - 2021

2021 Top Three Scores in DX SO								
Call	Category	CWQs	PHQs	QsoPts	Mults	Score*	Bonus	Final Score
OM2VL	DX SO	255	50	865	125	108125	15500	123625
DL3DXX	DX SO	190	0	570	102	58140	9000	67140
DK2OY	DX SO	49	1	149	35	5215	500	5715

Here are all the scores in the DX-SO category

All Scores 2021 DX Single Op Category								
Call	Category	CWQs	PHQs	QsoPts	Mults	Score*	Bonus	Final Score
OM2VL	DX SO	255	50	865	125	108125	15500	123625
DL3DXX	DX SO	190	0	570	102	58140	9000	67140
DK2OY	DX SO	49	1	149	35	5215	500	5715
KP4/K7GM	DX SO	38	0	114	24	2736	0	2736
UA3AGW	DX SO	26	0	78	24	1872	500	2372
SP5SA	DX SO	23	0	69	18	1242	500	1742
JO7WXN	DX SO	15	0	45	15	675	1000	1675
LY5W	DX SO	14	0	42	11	462	0	462
F6EPO	DX SO	8	0	24	7	168	0	168
HI8A	DX SO	7	0	21	6	126	0	126
IK2CFD	DX SO	6	0	18	6	108	0	108
SM1TDE	DX SO	4	0	12	4	48	0	48
SM5TPW	DX SO	2	0	6	2	12	0	12
KH6QJ	DX SO	0	2	4	2	8	0	8
HA3FHH	DX SO	0	1	2	1	2	0	2

Section 4: Texas Individual Player Scores

Section 4.1: Texas Single Op CW Only Low-Power Category – The TX-SO-CWO-LP category was a new one beginning in 2019 when the TX-SO-CWO category was split into a LP and HP category. This year Dale-KG5U decided to stay home in Harris county rather than hitting the road as he has done in past events. Its clear from the scores that he focused quite a bit on working the mults and tracking the mobiles (MTB=8000) which put him over the top against strong efforts by Mike-WA5POK operating as W5ACQ from often rare Brewster county and Roger-W5LXS operating out of Midland county. W5LXS upped his game this year nearly doubling his first-place score of 2020 and ended up with a very competitive score but only managed to hold on to third-place.

Texas QSO Party - 2021

2019 Top Three Scores in TX CWO SO LP							
Call	Category	CWQs	QsoPts	Mults	Score*	Bonus	Final Score
AE5GT	TX CWO SO LP	401	1203	133	159999	5000	164999
K5LH	TX CWO SO LP	312	936	123	115128	3500	118628
AJ4F	TX CWO SO LP	359	1077	91	98007	500	98507
2020 Top Three Scores in TX CWO SO LP							
Call	Category	CWQs	QsoPts	Mults	Score*	Bonus	Final Score
W5LXS	TX CWO SO LP	416	1248	111	138528	1000	139528
WA5POK	TX CWO SO LP	493	1479	93	137547	500	138047
K5LH	TX CWO SO LP	347	1041	104	108264	2500	110764
2021 Top Three Scores in TX CWO SO LP							
Call	Category	CWQs	QsoPts	Mults	Score*	Bonus	Final Score
KG5U	TX CWO SO LP	473	1419	154	218526	8000	226526
W5ACQ	TX CWO SO LP	652	1956	111	217116	2000	219116
W5LXS	TX CWO SO LP	453	1359	147	199773	6500	206273

Here are all the scores in the TX-CWO-SO-LP category. This category had 34 entries. A top-ten finish in this category required about 240 QSOs and 100 multipliers whereas a top-three finish required about 450 QSOs and 150 multipliers.

All Scores 2021 Texas-Single Op CW Only Low Power Category							
Call	Category	CWQs	QsoPts	Mults	Score*	Bonus	Final Score
KG5U	TX CWO SO LP	473	1419	154	218526	8000	226526
W5ACQ	TX CWO SO LP	652	1956	111	217116	2000	219116
W5LXS	TX CWO SO LP	453	1359	147	199773	6500	206273
N5XZ	TX CWO SO LP	458	1374	117	160758	1000	161758
K5LH	TX CWO SO LP	347	1041	123	128043	4500	132543
N9OF	TX CWO SO LP	316	948	116	109968	4500	114468
K5ME	TX CWO SO LP	341	1023	97	99231	1000	100231
W5TMT	TX CWO SO LP	351	1053	90	94770	0	94770
N9NM	TX CWO SO LP	268	804	100	80400	1000	81400
N5NAA	TX CWO SO LP	237	711	97	68967	1500	70467
N5KWN	TX CWO SO LP	325	975	72	70200	0	70200
KI5DDO	TX CWO SO LP	211	633	72	45576	0	45576
W5YDM	TX CWO SO LP	201	603	75	45225	0	45225
KI7ID	TX CWO SO LP	193	579	75	43425	0	43425
KD2KW	TX CWO SO LP	193	579	71	41109	0	41109
NA5YO	TX CWO SO LP	145	435	84	36540	2000	38540
K5GA	TX CWO SO LP	108	324	72	23328	1000	24328

Texas QSO Party - 2021

W5QLF	TX CWO SO LP	130	390	60	23400	0	23400
KF5DDV	TX CWO SO LP	85	255	74	18870	4000	22870
WA5LHM	TX CWO SO LP	125	375	52	19500	0	19500
K5SBR	TX CWO SO LP	82	246	66	16236	1500	17736
K5YZW	TX CWO SO LP	115	345	45	15525	0	15525
N5MI	TX CWO SO LP	67	201	55	11055	2500	13555
AB5XS	TX CWO SO LP	66	198	31	6138	0	6138
W2MN	TX CWO SO LP	38	114	34	3876	1000	4876
W9LCQ	TX CWO SO LP	45	135	31	4185	0	4185
K7UD	TX CWO SO LP	45	135	28	3780	0	3780
W8OV	TX CWO SO LP	27	81	24	1944	0	1944
KG5IEE	TX CWO SO LP	23	69	17	1173	0	1173
KE5EN	TX CWO SO LP	19	57	17	969	0	969
N5BA	TX CWO SO LP	18	54	17	918	0	918
W5AJ	TX CWO SO LP	16	48	14	672	0	672
K5TMT	TX CWO SO LP	12	36	11	396	0	396
KI5NXR	TX CWO SO LP	14	42	8	336	0	336

Section 4.2: Texas Single Op CW Only High-Power Category – The TX-CWO-SO-HP category was new beginning in 2019 differentiating TX-CWO-SO on the basis of power output (LP vs HP). Gator-N5RZ recovered from the ice storm that shut down most of Texas in February 2020 to blow away the competition in this category operating from his rebuilt station in Gillespie county.

2019 Top Three Scores in TX CWO SO HP							
Call	Category	CWQs	QsoPts	Mults	Score*	Bonus	Final Score
N5RZ	TX CWO SO HP	426	1278	115	146970	2000	148970
W5GN	TX CWO SO HP	441	1323	94	124362	0	124362
KONM[W HAR]	TX CWO SO HP	345	1035	98	101430	0	101430
2020 Top Three Scores in TX CWO SO HP							
Call	Category	CWQs	QsoPts	Mults	Score*	Bonus	Final Score
N5XZ	TX CWO SO HP	555	1665	96	159840	500	160340
KE5C	TX CWO SO HP	551	1653	88	145464	0	145464
W5MT	TX CWO SO HP	449	1347	85	114495	500	114995
2021 Top Three Scores in TX CWO SO HP							
Call	Category	CWQs	QsoPts	Mults	Score*	Bonus	Final Score
N5RZ	TX CWO SO HP	1215	3645	198	721710	13500	735210
K5OT	TX CWO SO HP	794	2382	127	302514	500	303014
W0VX	TX CWO SO HP	570	1710	140	239400	4000	243400

Texas QSO Party - 2021

Here are all of the 19 scores in the TX-CWO-SO-HP category.

All Scores 2021 Texas-Single Op CW Only High-Power Category							
Call	Category	CWQs	QsoPts	Mults	Score*	Bonus	Final Score
N5RZ	TX CWO SO HP	1215	3645	198	721710	13500	735210
K5OT	TX CWO SO HP	794	2382	127	302514	500	303014
W0VX	TX CWO SO HP	570	1710	140	239400	4000	243400
K5NA	TX CWO SO HP	576	1728	118	203904	1500	205404
WA8ZBT	TX CWO SO HP	497	1491	115	171465	1000	172465
N5AW	TX CWO SO HP	493	1479	98	144942	1000	145942
K8LS	TX CWO SO HP	372	1116	112	124992	3000	127992
K5QR	TX CWO SO HP	351	1053	113	118989	500	119489
K5TIA	TX CWO SO HP	360	1080	108	116640	1500	118140
AF5J	TX CWO SO HP	325	975	71	69225	0	69225
K5TU	TX CWO SO HP	271	813	74	60162	0	60162
N5WNG	TX CWO SO HP	245	735	80	58800	0	58800
N5TM	TX CWO SO HP	229	687	84	57708	0	57708
K5AX	TX CWO SO HP	170	510	94	47940	2000	49940
N5JB	TX CWO SO HP	216	648	71	46008	0	46008
NM5M	TX CWO SO HP	101	303	55	16665	0	16665
W5RF	TX CWO SO HP	52	156	40	6240	0	6240
K5DU	TX CWO SO HP	23	69	19	1311	0	1311
K5LY	TX CWO SO HP	25	75	16	1200	0	1200

Section 4.3: Texas Single Op Phone Only Low-Power Category –The TX-SO-PHO-LP was a new category introduced in 2019 when the TX-SO-PHO category was separated into LP and HP divisions. A total of 32 logs were received in this category. Requirements for a top-three finish in this category in 2021 were about 100 QSOs and 50 multipliers. As the top-scorer Jim-N5DTT doubled each of those minimums operating out of his station in semi-rare Fayette county.

2019 Top Three Scores in TX PHO SO LP							
Call	Category	PHQs	QsoPts	Mults	Score	Bonus	Total Score
K5WPH	TX PHO SO LP	136	272	66	17952	0	17952
N5DTT	TX PHO SO LP	88	176	67	11792	500	12292
NE5B	TX PHO SO LP	93	186	60	11160	0	11160
2020 Top Three Scores in TX PHO SO LP							
Call	Category	PHQs	QsoPts	Mults	Score	Bonus	Total Score
NU5DE	TX PHO SO LP	289	578	66	38148	0	38148
W5TJL	TX PHO SO LP	278	556	60	33360	0	33360
WA5JMZ	TX PHO SO LP	169	338	71	23998	0	23998

Texas QSO Party - 2021

2021 Top Three Scores in TX PHO SO LP							
Call	Category	PHQs	QsoPts	Mults	Score	Bonus	Total Score
N5DTT	TX PHO SO LP	228	456	101	46056	500	46556
W5CSM	TX PHO SO LP	160	320	56	17920	0	17920
W5JCC	TX PHO SO LP	99	198	46	9108	0	9108

Here are the scores of all thirty-two participants in the TX-SO-PHO-LP category. Bonus points (MTB) were difficult to obtain by this group due to the limited number of mobiles operating SSB.

All Scores 2021 Texas-Single Op Phone Only Low-Power Category							
Call	Category	PHQs	QsoPts	Mults	Score	Bonus	Total Score
N5DTT	TX PHO SO LP	228	456	101	46056	500	46556
W5CSM	TX PHO SO LP	160	320	56	17920	0	17920
W5JCC	TX PHO SO LP	99	198	46	9108	0	9108
NW5Q	TX PHO SO LP	74	148	54	7992	1000	8992
NZ5X	TX PHO SO LP	75	150	46	6900	0	6900
W5RAW	TX PHO SO LP	66	132	47	6204	0	6204
K5LGX	TX PHO SO LP	76	152	40	6080	0	6080
W5RH	TX PHO SO LP	54	108	43	4644	0	4644
W5DTB	TX PHO SO LP	59	118	34	4012	0	4012
WJ9O	TX PHO SO LP	48	96	38	3648	0	3648
W5ALW	TX PHO SO LP	44	88	33	2904	0	2904
NE5B	TX PHO SO LP	45	90	31	2790	0	2790
K5MAY	TX PHO SO LP	39	78	33	2574	0	2574
KI5KUI	TX PHO SO LP	39	78	29	2262	0	2262
N5AJD	TX PHO SO LP	39	78	27	2106	0	2106
K5TY	TX PHO SO LP	34	68	26	1768	0	1768
KF5RUW	TX PHO SO LP	27	54	24	1296	0	1296
KD5FBA	TX PHO SO LP	19	38	17	646	500	1146
KF5OMH	TX PHO SO LP	26	52	21	1092	0	1092
KF5RHI	TX PHO SO LP	25	50	21	1050	0	1050
AA5AH	TX PHO SO LP	29	58	18	1044	0	1044
AF5M	TX PHO SO LP	25	50	20	1000	0	1000
N5HYP	TX PHO SO LP	31	62	16	992	0	992
KI5FIQ	TX PHO SO LP	15	30	15	450	500	950
K1THO	TX PHO SO LP	18	36	16	576	0	576
KB6OJE	TX PHO SO LP	16	32	10	320	0	320
K5EIS	TX PHO SO LP	17	34	9	306	0	306
W5RMM	TX PHO SO LP	8	16	6	96	0	96
KC5SLQ	TX PHO SO LP	9	18	5	90	0	90

Texas QSO Party - 2021

KI5AXQ	TX PHO SO LP	5	10	3	30	0	30
K5WW	TX PHO SO LP	2	4	2	8	0	8
KU5Y	TX PHO SO LP	1	2	1	2	0	2

Section 4.4: Texas Single Op Phone Only High-Power Category –The TX-SO-PHO-HP was a new category beginning in 2019 when the TX-SO-PHO category was split into LP and HP divisions. In 2021 there were only five entrants in this category. For the second year in a row Bob-W5LO held on to the top finish and in the process nearly doubled his winning score from 2020.

2019 Top Three Scores in TX PHO SO HP							
Call	Category	PHQs	QsoPts	Mults	Score	Bonus	Total Score
KI4LP	TX PHO SO HP	588	1176	113	132888	0	132888
N5IT	TX PHO SO HP	551	1102	118	130036	0	130036
AD5WB	TX PHO SO HP	374	748	111	83028	500	83528
2020 Top Three Scores in TX PHO SO HP							
Call	Category	PHQs	QsoPts	Mults	Score	Bonus	Total Score
W5LO	TX PHO SO HP	675	1350	105	141750	0	141750
K5LLA	TX PHO SO HP	568	1136	84	95424	0	95424
N5IT	TX PHO SO HP	494	988	76	75088	0	75088
2021 Top Three Scores in TX PHO SO HP							
Call	Category	PHQs	QsoPts	Mults	Score	Bonus	Total Score
W5LO	TX PHO SO HP	925	1850	125	231250	0	231250
N5DN	TX PHO SO HP	320	640	111	71040	0	71040
WB8LBZ	TX PHO SO HP	212	424	115	48760	1500	50260

Here are the scores of all participants in the TX-SO-PHO-HP category.

All Scores 2021 Texas-Single Op Phone Only High-Power Category							
Call	Category	PHQs	QsoPts	Mults	Score	Bonus	Total Score
W5LO	TX PHO SO HP	925	1850	125	231250	0	231250
N5DN	TX PHO SO HP	320	640	111	71040	0	71040
WB8LBZ	TX PHO SO HP	212	424	115	48760	1500	50260
AG5MS	TX PHO SO HP	41	82	22	1804	0	1804

Texas QSO Party - 2021

Section 4.5: Texas Single Op Mixed-Mode Low-Power Category –The TX-SO-MIX-LP was a new category beginning in 2019 when the TX-SO-MIX category was separated into LP and HP divisions. In 2021 Joe-N5RGH returned to the top spot he held in 2019, putting in a fine effort from rare Ector county, significantly exceeding his 2019 Q-count and Mult-count as well as his MTB by virtue of tracking Alan-N5NA through many of the counties activated by N5NA.

2019 Top Three Scores in TX SO MIX LP								
Call	Category	CWQs	PHQs	QsoPts	Mults	Score*	Bonus	Final Score
N5RGH	TX SO MIX LP	335	54	1113	108	120204	1000	121204
WA5DTK	TX SO MIX LP	192	240	1056	106	111936	0	111936
K5IX	TX SO MIX LP	261	17	817	112	91504	2500	94004
2020 Top Three Scores in TX SO MIX LP								
Call	Category	CWQs	PHQs	QsoPts	Mults	Score*	Bonus	Final Score
N5DO	TX SO MIX LP	323	4	977	88	85976	0	85976
K5NZ	TX SO MIX LP	225	1	677	60	40620	0	40620
W5MF	TX SO MIX LP	135	100	605	59	35695	0	35695
2021 Top Three Scores in TX SO MIX LP								
Call	Category	CWQs	PHQs	QsoPts	Mults	Score*	Bonus	Final Score
N5RGH	TX SO MIX LP	546	154	1946	156	303576	6000	309576
N5DO	TX SO MIX LP	246	92	922	125	115250	1000	116250
WA5RR	TX SO MIX LP	264	27	846	94	79524	0	79524

Here are the scores of all participants in the TX-SO-MIX-LP category.

All Scores 2021 Texas-Single Op Mixed Low-Power Category									
Call	Category	CWQs	PHQs	DGQs	QsoPts	Mults	Score*	Bonus	Final Score
N5RGH	TX SO MIX LP	546	154	0	1946	156	303576	6000	309576
N5DO	TX SO MIX LP	246	92	0	922	125	115250	1000	116250
WA5RR	TX SO MIX LP	264	27	0	846	94	79524	0	79524
K5WSN	TX SO MIX LP	273	38	0	895	78	69810	0	69810
AJ4F	TX SO MIX LP	267	0	0	801	74	59274	0	59274
KG5ONN	TX SO MIX LP	138	200	0	814	67	54538	0	54538
KG5EIU	TX SO MIX LP	0	6	131	405	70	28350	0	28350
AL5P	TX SO MIX LP	1	175	0	353	75	26475	0	26475
K5KUA	TX SO MIX LP	195	32	0	649	39	25311	0	25311
K5AEM	TX SO MIX LP	90	5	0	280	64	17920	1500	19420
AC5AA	TX SO MIX LP	94	7	0	296	62	18352	1000	19352
NC5G	TX SO MIX LP	72	37	0	290	63	18270	0	18270
AJ5ZX	TX SO MIX LP	41	8	0	139	44	6116	1000	7116

Texas QSO Party - 2021

K5YX	TX SO MIX LP	37	14	0	139	32	4448	0	4448
N3BUO	TX SO MIX LP	9	40	0	107	27	2889	0	2889
W5GCX	TX SO MIX LP	19	12	0	81	24	1944	0	1944
AI5CA	TX SO MIX LP	0	29	3	67	26	1742	0	1742
KF5ZBL	TX SO MIX LP	0	11	19	79	22	1738	0	1738
W5TV	TX SO MIX LP	16	10	0	68	23	1564	0	1564
KI5KMQ	TX SO MIX LP	0	0	35	105	12	1260	0	1260
KD5MMM	TX SO MIX LP	14	9	0	60	20	1200	0	1200

Section 4.6: Texas Single Op Mixed-Mode High-Power Category The TX-SO-MIX-HP was a new category beginning in 2019 when the TX-SO-MIX category was split into LP and HP divisions. In 2021 Frank-WA2VYA, operating out of Bastrop county, returned to the first-place spot he held in 2019 by significantly increasing his phone QSOs from 2019 while holding CW QSOs nearly the same and matching his success in tracking the mobiles. For the past three years Rick-N5JJ has maintained a presence in the top-three in this category significantly improving his score in 2021 but falling short of the first-place due to a deficit in the multiplier column. A few more mults by N5JJ and some additional mobile tracking is all that is needed for upping the competitiveness in this category. It will be interesting to see if that happens in 2022. Interesting also to note the third-place finish of Jeff-N5TJ, a well-known operator in contesting circles. We might have a three-way race in this category in 2022. Stay tuned.

2019 Top Three Scores in TX SO MIX HP								
Call	Category	CWQs	PHQs	QsoPts	Mults	Score*	Bonus	Final Score
WA2VYA	TX SO MIX HP	446	358	2054	177	363558	7500	371058
K5OT	TX SO MIX HP	432	382	2060	120	247200	500	247700
N5JJ	TX SO MIX HP	374	574	2270	97	220190	0	220190
2020 Top Three Scores in TX SO MIX HP								
Call	Category	CWQs	PHQs	QsoPts	Mults	Score*	Bonus	Final Score
W5KFT(op K5PI)	TX SO MIX HP	535	413	2431	120	291720	1000	292720
N5JJ	TX SO MIX HP	435	703	2711	82	222302	0	222302
W5GCX	TX SO MIX HP	243	40	809	58	46922	0	46922
2021 Top Three Scores in TX SO MIX HP								
Call	Category	CWQs	PHQs	QsoPts	Mults	Score*	Bonus	Final Score
WA2VYA	TX SO MIX HP	479	510	2457	186	457002	8500	465502
N5JJ	TX SO MIX HP	629	564	3015	135	407025	500	407525
N5TJ	TX SO MIX HP	416	199	1646	119	195874	1000	196874

Texas QSO Party - 2021

Here are the scores of all participants in the TX-SO-MIX-HP category.

All Scores 2021 Texas-Single Op Mixed High-Power Category									
Call	Category	CWQs	PHQs	DGQs	QsoPts	Mults	Score*	Bonus	Final Score
WA2VYA	TX SO MIX HP	479	510	0	2457	186	457002	8500	465502
N5JJ	TX SO MIX HP	629	564	0	3015	135	407025	500	407525
N5TJ	TX SO MIX HP	416	199	0	1646	119	195874	1000	196874
W5MF	TX SO MIX HP	323	136	0	1241	120	148920	500	149420
K5WAF	TX SO MIX HP	148	29	0	502	119	59738	6000	65738
W5NAC	TX SO MIX HP	10	145	0	320	80	25600	500	26100
WA5LXS	TX SO MIX HP	20	16	0	92	27	2484	0	2484
K5JPP	TX SO MIX HP	0	10	1	23	8	184	0	184

Section 4.7: Texas Single Op QRP Category – Entries in this category have been slim as you can see below. Fortunately, in 2021 two other stations came forth to give Nick-WB5BKL some competition. As WB5BKL has demonstrated, over many years in addition to 2019-21, with emphasis on CW and appropriate time in the chair, it is possible to make somewhere around 200 QSOs in this category. As conditions improve with the new solar cycle, we hope to see that number increase.

2019 Top Three (ALL & Only) Scores in TX SO QRP								
Call	Category	CWQs	PHQs	QsoPts	Mults	Score*	Bonus	Final Score
WB5BKL	TX SO QRP	177	0	531	86	45666	1500	47166
No Entry	TX SO QRP	-	-	-	-	-	-	-
No Entry	TX SO QRP	-	-	-	-	-	-	-
2020 Top Three (ALL & Only) Scores in TX SO QRP								
Call	Category	CWQs	PHQs	QsoPts	Mults	Score*	Bonus	Final Score
WB5BKL	TX SO QRP	217	0	651	87	56637	1500	58137
W5ESE	TX SO QRP	81	0	243	49	11907	0	11907
KJ5MA	TX SO QRP	0	71	142	37	5254	0	5254
2021 Top Three (ALL & Only) Scores in TX SO QRP								
Call	Category	CWQs	PHQs	QsoPts	Mults	Score*	Bonus	Final Score
WB5BKL	TX SO QRP	228	0	684	113	77292	5000	82292
W5ESE	TX SO QRP	56	39	246	66	16236	500	16736
KG5OWB	TX SO QRP	61	0	183	26	4758	0	4758
KE0TT/5	TX SO QRP	22	0	66	13	858	0	858

Texas QSO Party - 2021

Section 4.8: Texas Mobile Single Op CW Only Category –The Texas QSO Party has been fortunate over the years to attract mobiles from outside the state. For whatever reason: visiting relatives, passing through on the way to a vacation, or just coming over from a neighboring state to activate some counties mobiles like to come to the TQP. And we’re glad of that because it certainly adds to the excitement. In the last 3-4 years have you had the opportunity to work or just listen to Jim-AD4EB and driver Melody handle the pileups? Just do the math: 2800 Qs over 18 hours means a steady rate of 155 per hour. That takes great operating skill along with great driving in order to keep away from any deadtime in overworked counties. Will there be a 3000 QSO run in 2022, stay tuned?

2019 Top Three Scores in TXM SO CWO							
Call	Category	CWQs	QsoPts	Mults	Score*	Bonus	Final Score
AD4EB	TXM SO CWO	2063	6189	100	618900	44000	662900
KS5A	TXM SO CWO	369	1107	79	87453	10500	97953
W3DYA	TXM SO CWO	314	942	65	61230	16000	77230
2020 Top Three Scores in TXM SO CWO							
Call	Category	CWQs	QsoPts	Mults	Score*	Bonus	Final Score
AD4EB	TXM SO CWO	2746	8238	83	683754	43000	726754
N5NA	TXM SO CWO	1888	5664	97	549408	31500	580908
KS5A	TXM SO CWO	647	1941	69	133929	11500	145429
2021 Top Three Scores in TXM SO CWO							
Call	Category	CWQs	QsoPts	Mults	Score*	Bonus	Final Score
AD4EB	TXM SO CWO	2787	8361	103	861183	42500	903683
N5NA	TXM SO CWO	1613	4839	105	508095	29500	537595
WW5X	TXM SO CWO	848	2544	67	170448	18000	188448

Here are all the 2021 entries in the Texas Mobile Single Operator CW Only category. Thanks to all the mobiles and drivers in this group who took the time and resources to put counties on the air.

All Scores 2021 Texas Mobile Single Op CW Only Category							
Call	Category	CWQs	QsoPts	Mults	Score*	Bonus	Final Score
AD4EB	TXM SO CWO	2787	8361	103	861183	42500	903683
N5NA	TXM SO CWO	1613	4839	105	508095	29500	537595
WW5X	TXM SO CWO	848	2544	67	170448	18000	188448
N4CD	TXM SO CWO	350	1050	75	78750	4000	82750
K1DW	TXM SO CWO	57	171	37	6327	6000	12327

Texas QSO Party - 2021

Section 4.9: Texas Mobile Single Op Phone Only Category –This category picked up some entries in 2021. Victor-WB0TEV continues to lead this category with an outstanding drive/record/transcribe effort. Lee-KI5MM is continues to gain ground by doubling his score over the past two years.

2019 Scores in TXM SO PHO							
Call	Category	PHQs	QsoPts	Mults	Score*	Bonus	Final Score
WB0TEV	TXM SO PHO	478	956	60	57360	43000	100360
NS5P	TXM SO PHO	82	164	23	3772	6000	9772
K5WTH	TXM SO PHO	77	154	41	6314	2000	8314
2020 All Scores in TXM SO PHO							
Call	Category	PHQs	QsoPts	Mults	Score*	Bonus	Final Score
WB0TEV	TXM SO PHO	275	550	45	24750	10000	34750
KI5MM	TXM SO PHO	236	472	42	19824	13000	32824
KG5CMS	TXM SO PHO	44	88	18	1584	4000	5584
2021 All Scores in TXM SO PHO							
Call	Category	PHQs	QsoPts	Mults	Score*	Bonus	Final Score
WB0TEV	TXM SO PHO	636	1272	91	115752	25000	140752
KI5MM	TXM SO PHO	478	956	87	83172	27000	110172
WA5DSS	TXM SO PHO	183	366	65	23790	11000	34790
KG5CMS	TXM SO PHO	101	202	33	6666	6000	12666
KM4TYV	TXM SO PHO	148	296	34	10064	2000	12064
KF5VO	TXM SO PHO	36	72	23	1656	2000	3656
WO5O	TXM SO PHO	5	10	1	10	0	10

Section 4.10: Texas Mobile Single Op Mixed Mode Category –Here is another category where TQP is fortunate to have participation from an out of state mobile. This year Connie (aka Con)-K5CM came down from Oklahoma to activate a number of north Texas county lines and tri-fectas: LAMA/RRIV, DELT/FANN/HUNT, CAMP/WOOD/UPSH, etc. Those multi-county QSOs really keep the loggers on their toes and are fun to work or just listen to for a while.

2019 Scores in TXM SO								
Call	Category	CWQs	PHQs	QsoPts	Mults	Score*	Bonus	Total Score
N5NA	TXM SO	1681	26	5095	94	478930	34500	513430
N4CD	TXM SO	937	41	2893	110	318230	20500	338730
KO5G	TXM SO	313	64	1067	57	60819	13000	73819
2020 Scores in TXM SO								

Texas QSO Party - 2021

Call	Category	CWQs	PHQs	QsoPts	Mults	Score*	Bonus	Total Score
N4CD	TXM SO	783	20	2389	76	181564	12500	194064
K5IX	TXM SO	554	18	1698	57	96786	16000	112786
K5EC	TXM SO	268	159	1122	77	86394	15000	101394
2021 All Scores in TXM SO								
Call	Category	CWQs	PHQs	QsoPts	Mults	Score*	Bonus	Total Score
K5CM	TXM SO	1561	192	5067	86	435762	21000	456762
K5EC	TXM SO	383	815	2779	131	364049	5000	369049
K5IX	TXM SO	162	35	556	44	24464	13000	37464

Section 4.11: Texas Mobile Multi-Op Category –The TXM-MO category provides an opportunity for two (or more) operators to get together to share the driving and operating usually allowing broader county coverage than is possible with a single op plus driver.

2019 Scores in TXM MO								
Call	Category	CWQs	PHQs	QsoPts	Mults	Score*	Bonus	Final Score
K5DX	TXM MO	601	2	1807	67	121069	23000	144069
N8AI	TXM MO	169	0	507	58	29406	6500	35906
No Entry	TXM-MO	--	--	--	--	--	--	--
2020 ALL Scores in TXM MO								
Call	Category	CWQs	PHQs	QsoPts	Mults	Score*	Bonus	Final Score
K5DX	TXM MO	944	46	2924	66	192984	26000	218984
N8AI	TXM MO	128	0	384	54	20736	4000	24736
No Entry	TXM MO	--	--	--	--	--	--	--
2021 ALL Scores in TXM MO								
Call	Category	CWQs	PHQs	QsoPts	Mults	Score*	Bonus	Final Score
W5CT	TXM MO	2099	44	6385	106	676810	38500	715310
K5DX	TXM MO	954	12	2886	80	230880	30000	260880
No Entry	TXM MO	--	--	--	--	--	--	--

Operators:

W5CT (K5PI, W5MJ, WK5S)

K5DX (K5GQ, NM5G)

Section 4.12: Texas Multi-Op High Power Category –The TX-MO-HP category provides an opportunity for two (or more) operators to get together to share the TQP experience in a flexible schedule for those who might not be able to devote the entire 18 hours of the weekend to the party. Again, this year there were only two in this category.

2019 Scores in TX MO HP									
Call	Category	CWQs	PHQs	DGQs	QsoPts	Mults	Score*	Bonus	Final Score
W5CT	TX MO HP	933	1002	0	4803	174	835722	2500	838222

Texas QSO Party - 2021

W5NN	TX MO HP	263	233	0	1255	116	145580	500	146080
K5IZO	TX MO HP	0	158	0	316	74	23384	0	23384
2020 All Scores in TX MO HP									
Call	Category	CWQs	PHQs	DGQs	QsoPts	Mults	Score*	Bonus	Final Score
NX5M	TX MO HP	722	977	0	4120	148	609760	0	609760
K5Y	TX MO HP	385	432	0	2019	80	161520	0	161520
No Entry	TX MO HP	--	--	--	--	--	--	--	--
2021 All Scores in TX MO HP									
Call	Category	CWQs	PHQs	DGQs	QsoPts	Mults	Score*	Bonus	Final Score
K5IZO	TX MO HP	0	305	0	610	112	68320	0	68320
W5DLP	TX MO HP	0	57	46	252	59	14868	0	14868
No Entry	TX MO HP	--	--	0	--	--	--	--	--

Operators:

K5IZO (K5IZO K5LKJ)

W5DLP (W5DLP W2CEW)

Section 4.13: Texas Multi-Op Low Power Category –The TX-MO-LP category provides an opportunity for two (or more) operators to get together to share the TQP experience in a flexible schedule for those who might not be able to devote the entire 18 hours of the weekend to the party. This year saw a total of four entries with NU5DE led by Robert-N5KF returning to the top-three box.

2019 Scores in TX MO LP								
Call	Category	CWQs	PHQs	QsoPts	Mults	Score*	Bonus	Final Score
N5NYM	TX MO LP	464	146	1684	145	244180	3500	247680
NU5DE	TX MO LP	10	513	1056	91	96096	0	96096
WD5DDH	TX MO LP	0	313	626	92	57592	0	57592
2020 All Scores in TX MO LP								
Call	Category	CWQs	PHQs	QsoPts	Mults	Score*	Bonus	Final Score
W5WV	TX MO LP	0	27	54	19	1026	0	1026
WA5DCT	TX MO LP	0	21	42	7	294	0	294
No Entry	TX MO LP	--	--	--	--	--	--	--
2021 All Scores in TX MO LP								
Call	Category	CWQs	PHQs	QsoPts	Mults	Score*	Bonus	Final Score
NU5DE	TX MO LP	0	808	1616	114	184224	0	184224
K5Y	TX MO LP	318	145	1244	102	126888	0	126888
KG5SQJ	TX MO LP	0	244	488	100	48800	500	49300
N5T	TX MO LP	0	120	240	67	16080	0	16080

Texas QSO Party - 2021

Operators:

NU5DE (N5KF N15B N5NXS)
K5Y (K5AW KJ0D W5HWZ KJ5Y)
KG5SQJ (KG5SQJ KG5BBW KG5BZW)
N5T (N5KRG KE5KOF KM5YQ K5LOL NN5R)

Section 5: Texas Club Aggregate Results

Section 5.1: Summary Each Texas operator submitting a log can specify a Texas club to receive their score and for each club these scores are summed to create the club's aggregate score. The winner of the club competition receives a traveling trophy as well as a permanent plaque. In 2021 there were twenty-seven clubs submitting as many as 19 and as few as 1 score. As you can see from the following tables the Central Texas DX and Contest Club continues to hold the trophy and continues with the most seats in the chairs followed close behind by TDXS and DFWCG.

Here is a summary of the top three clubs for the past three years 2019-21 followed by the detailed listing used to compile the 2021 results.

2019 Top Three Clubs		
Club	Entries	Total Score
Central Texas DX & Contest Club	13	1824816
Midland ARC	5	729969
Texas DX Society	17	697184
2020 Top Three Clubs		
Club	Entries	Total Score
Central Texas DX and Contest Club	15	1248019
Texas DX Society	15	847168
Midland ARC	2	720436
2021 Top Three Clubs		
Club	Entries	Total Score
Central Texas DX and Contest Club	19	2573126
Texas DX Society	17	1669757
DFW Contest Group	16	1222301

2021 Aggregate Scores for All Clubs		
Club	Entries	Total Score
Central Texas DX and Contest Club	19	2573126
Texas DX Society	17	1669757
DFW Contest Group	16	1222301

Texas QSO Party - 2021

Midland ARC	4	748552
West Texas ARC	2	323131
Naturist ARC	1	184224
Heart of Texas DX Society	1	132543
STX Remote DX Club	1	126888
Ellis County ARC	2	110478
Port Lavaca ARC	4	79156
ARC of Parker County	4	76201
North Richland Hills ARC	1	71040
Lake Area Amateur Radio Klub	6	53848
Sun City ARC	1	50260
North Texas Contest Club	1	46008
Williamson County ARC	1	45576
Dallas ARC	3	31348
Nacogdoches ARC	2	27664
South Texas DX and Contest Club	3	27430
Austin QRP Club	1	16736
Jack 5	1	16080
Northwest ARS	1	3648
Brazos Valley ARC	2	3088
Kilocycle ARC	1	1050
Irving ARC	1	992
Southwest Dallas County ARC	1	320
Austin ARC	1	96

Section 5.2: Texas Club Detailed Results

Here are the detailed scores used to compile the Texas Club Aggregate Summary. If your score is contributed to the wrong club, or to no club and it should be, please let NO5W know and a review of the log and possible correction will be made.

Call	Category	Club	Final Score
W5CT	TXM MO	Central Texas DX and Contest Club	715310
WA2VYA	TX SO HP	Central Texas DX and Contest Club	465502
K5OT	TX CWO SO HP	Central Texas DX and Contest Club	303014
K5NA	TX CWO SO HP	Central Texas DX and Contest Club	205404
N5AW	TX CWO SO HP	Central Texas DX and Contest Club	145942
K8LS	TX CWO SO HP	Central Texas DX and Contest Club	127992
N5DO	TX SO LP	Central Texas DX and Contest Club	116250
N9OF	TX CWO SO LP	Central Texas DX and Contest Club	114468
WB5BKL	TX SO QRP	Central Texas DX and Contest Club	82292

Texas QSO Party - 2021

N9NM	TX CWO SO LP	Central Texas DX and Contest Club	81400
N5NAA	TX CWO SO LP	Central Texas DX and Contest Club	70467
KG5ONN	TX SO LP	Central Texas DX and Contest Club	54538
K5IX	TXM SO	Central Texas DX and Contest Club	37464
WA5LHM	TX CWO SO LP	Central Texas DX and Contest Club	19500
AC5AA	TX SO LP	Central Texas DX and Contest Club	19352
W5RF	TX CWO SO HP	Central Texas DX and Contest Club	6240
W2MN	TX CWO SO LP	Central Texas DX and Contest Club	4876
AG5MS	TX PHO SO HP	Central Texas DX and Contest Club	1804
K5DU	TX CWO SO HP	Central Texas DX and Contest Club	1311
		Total	2573126
K5EC	TXM SO	Texas DX Society	369049
K5DX	TXM MO	Texas DX Society	260880
KG5U	TX SO LP	Texas DX Society	226526
N5XZ	TX CWO SO LP	Texas DX Society	161758
W5MF	TX SO HP	Texas DX Society	149420
K5TIA	TX CWO SO HP	Texas DX Society	118140
AF5J	TX CWO SO HP	Texas DX Society	69225
K5IZO	TX MO HP	Texas DX Society	68320
K5WAF	TX SO HP	Texas DX Society	65738
K5TU	TX CWO SO HP	Texas DX Society	60162
AJ4F	TX SO LP	Texas DX Society	59274
N5DTT	TX PHO SO LP	Texas DX Society	46556
W5RH	TX PHO SO LP	Texas DX Society	4644
W9LCQ	TX CWO SO LP	Texas DX Society	4185
NE5B	TX PHO SO LP	Texas DX Society	2790
W5GCX	TX SO LP	Texas DX Society	1944
KD5FBA	TX PHO SO LP	Texas DX Society	1146
		Total	1669757
W0VX	TX CWO SO HP	DFW Contest Group	243400
N5TJ	TX SO HP	DFW Contest Group	196874
WA8ZBT	TX CWO SO HP	DFW Contest Group	172465
WB0TEV	TXM SO PHO	DFW Contest Group	140752
K5QR	TX CWO SO HP	DFW Contest Group	119489
K5ME	TX CWO SO LP	DFW Contest Group	100231
WA5RR	TX SO LP	DFW Contest Group	79524
N5WNG	TX CWO SO HP	DFW Contest Group	58800
K5AX	TX CWO SO HP	DFW Contest Group	49940
NM5M	TX CWO SO HP	DFW Contest Group	16665

Texas QSO Party - 2021

K5YZW	TX CWO SO LP	DFW Contest Group	15525
K1DW	TXM SO CWO	DFW Contest Group	12327
NW5Q	TX PHO SO LP	DFW Contest Group	8992
N3BUO	TX SO LP	DFW Contest Group	2889
WA5LXS	TX SO HP	DFW Contest Group	2484
W8OV	TX CWO SO LP	DFW Contest Group	1944
		Total	1222301
N5NA	TXM SO CWO	Midland ARC	537595
W5LXS	TX CWO SO LP	Midland ARC	206273
W5DTB	TX PHO SO LP	Midland ARC	4012
W5AJ	TX CWO SO LP	Midland ARC	672
		Total	748552
N5RGH	TX SO LP	West Texas ARC	309576
N5MI	TX CWO SO LP	West Texas ARC	13555
		Total	323131
NU5DE	TX MO LP	Naturist Amateur Radio Club	184224
		Total	184224
K5LH	TX CWO SO LP	Heart of Texas DX Society	132543
		Total	132543
K5Y	TX MO LP	STX Remote DX Club	126888
		Total	126888
KI5MM	TXM SO PHO	Ellis County ARC	110172
K5EIS	TX PHO SO LP	Ellis County ARC	306
		Total	110478
NA5YO	TX CWO SO LP	Port Lavaca ARC	38540
KF5DDV	TX CWO SO LP	Port Lavaca ARC	22870
K5SBR	TX CWO SO LP	Port Lavaca ARC	17736
WO5O	TXM SO PHO	Port Lavaca ARC	10
		Total	79156
KG5SQJ	TX MO LP	ARC of Parker County	49300
AL5P	TX SO LP	ARC of Parker County	26475
KI5NXR	TX CWO SO LP	ARC of Parker County	336
KC5SLQ	TX PHO SO LP	ARC of Parker County	90

Texas QSO Party - 2021

		Total	76201
N5DN	TX PHO SO HP	North Richland Hills ARC	71040
		Total	71040
KD2KW	TX CWO SO LP	Lake Area Amateur Radio Klub	41109
K5YX	TX SO LP	Lake Area Amateur Radio Klub	4448
KF5VO	TXM SO PHO	Lake Area Amateur Radio Klub	3656
K5MAY	TX PHO SO LP	Lake Area Amateur Radio Klub	2574
KF5OMH	TX PHO SO LP	Lake Area Amateur Radio Klub	1092
KE5EN	TX CWO SO LP	Lake Area Amateur Radio Klub	969
		Total	53848
WB8LBZ	TX PHO SO HP	Sun City ARC	50260
		Total	50260
N5JB	TX CWO SO HP	North Texas Contest Club	46008
		Total	46008
KI5DDO	TX CWO SO LP	Williamson County ARC	45576
		Total	45576
KG5EIU	TX SO LP	Dallas ARC	28350
KF5ZBL	TX SO LP	Dallas ARC	1738
KI5KMQ	TX SO LP	Dallas ARC	1260
		Total	31348
W5NAC	TX SO HP	Nacogdoches ARC	26100
W5TV	TX SO LP	Nacogdoches ARC	1564
		Total	27664
W5QLF	TX CWO SO LP	South Texas DX and Contest Club	23400
KI5KUI	TX PHO SO LP	South Texas DX and Contest Club	2262
K5TY	TX PHO SO LP	South Texas DX and Contest Club	1768
		Total	27430
W5ESE	TX SO QRP	Austin QRP Club	16736
		Total	16736
N5T	TX MO LP	Jack 5	16080
		Total	16080

Texas QSO Party - 2021

WJ9O	TX PHO SO LP	Northwest ARS	3648
		Total	3648
W5ALW	TX PHO SO LP	Brazos Valley ARC	2904
K5JPP	TX SO HP	Brazos Valley ARC	184
		Total	3088
KF5RHI	TX PHO SO LP	Kilocycle ARC	1050
		Total	1050
N5HYP	TX PHO SO LP	Irving ARC	992
		Total	992
KB6OJE	TX PHO SO LP	Southwest Dallas County ARC	320
		Total	320
W5RMM	TX PHO SO LP	Austin Amateur Radio Club	96
		Total	96

Section 6: Some Statistics from the Logs

It's good to capture some statistics from the submitted logs in order to assess how the QSO party is going – up/down/sideways. Here are some statistics from the 2021 TQP including information on the level of participation, county activity, bands and modes used, etc.

Section 6.1: Logs Received – In 2021 we received 463 logs which was about the same as in 2020.

Every year a significant number of stations take part in the party, as evidenced by their calls being in a number of submitted logs, but, for one reason or another, fail to submit a log. A by-product of the log processing is a Received Stations Report which lists the number of logs in which each station appears, the number of QSOs represented, and whether the station submitted a log. The following data pulled from this report gives an indication of additional logs that could have been received but were not.

QSOs in Rcvd Logs	Number of No Log Stations
More than 300	1
100-299	13
75-99	11
50-74	22
25-49	74
Total	121

Texas QSO Party - 2021

In this table the first column is a number of QSOs in submitted logs where a station is listed as the received station. The second column is the number of stations that did not submit a log but where the number of reported QSOs with that station is in the range indicated in the first column. So, for example, there were 11 stations that had between 75 and 99 QSOs that did not submit a log. Adding the stations that had at least 25 QSOs would indicate that the potential number of logs was about $463 + 121 = 584$.

Section 6.2: Band Statistics: The 40m and 20m bands continue to be the primary bands for the party. Here's how the break down went in 2021 versus 2020 and 2019. The 80m band continued to pick up some from 40m as did the 20m band. No surprises on the other bands where the percentage was much less than .01%.

Band	Percent of QSOs on Band		
	2021	2020	2019
160	0	0	0+
80	3	3	4
40	42	35	39
20	54	62	55
15	1	0+	1
10	0+	0+	0+
6	0+	0+	0+
2	0+	0+	0+
432 MHz	0	0+	0

Section 6.3: Mode Statistics: CW continues to be the most popular mode, perhaps due to the large number of QSOs made by mobiles and the fact that CW is the easier mode from a mobile. The breakdown in 2021 was

QSO Mode	Percent of QSOs
CW	76.6
SSB	23.0
DG	.4

Section 6.4: QSO Destination: When you give a party, you hope that those from outside your area will attend and that the "locals" will mix and mingle with the outsiders and will not limit their conversations to other locals. Here's how the 2021 TQP stacked up on that statistic. You can see that the 2021 Texas QSO Party was definitely outward-facing.

QSO Destination	Percent of QSOs
Texas -to-Texas	18.6
Texas -to-US/VE	77.6
Texas-to-DX	3.8

Texas QSO Party - 2021

Section 6.5: Butt-in-Chair Stations – These are the stations that were active in every hour of the party by virtue of the fact that they made at least one contact in each hour, but of course in many cases, it was much more than one QSO. We certainly appreciate these operators, and their chairs, for the “support” they show for the TQP. Special thanks to.

- **Texas Mobile:** AD4EB, K5DX, KI5MM, W5CT, WW5X
- **Texas Fixed:** K5IZO, K5TIA, N5DTT, N5JJ, N5RGH, N5RZ, W5ACQ, W5LO, W5LXS, WA2VYA, WA8ZBT, WB5BKL, WB8LBZ
- **Out-of-state:** AA4TI, K3IE, K3TW, KA6BIM, KI6RRN, N8II, OM2VL, W5TM, WA6KHK, WB9CIF

Then there were a few who missed BIC status by only one hour. Of this group the most frequently missed hour was Hour 12, the last hour of the first day.

- **Mobile:** K5EC
- **Texas Fixed:** K5WSN, N5DO, N9NM, N9OF, NU5DE, NW5Q, W5MF
- **Out-of-state:** DL3DXX, K3WJV, K4DR, K8QKY, N6MU, N6OKU, NT6X, W0PI, W4SSF, W6TED

And finally, a few who missed BIC status by only two hours. Of this group the most frequently missed hours were Hours 11 and 12, the last two hours of the first day.

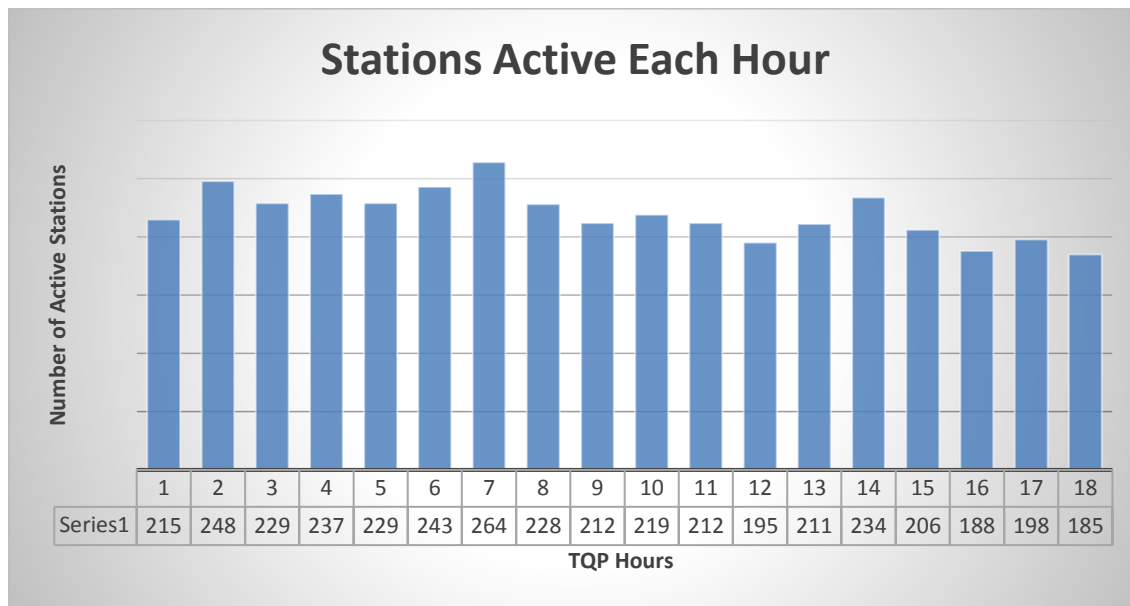
- **Mobile:** N5NA, WA5DSS
- **Texas Fixed:** K5LH, K5ME, KG5U, W0VX
- **Out-of-state:** K5XS, K5ZE, NS2N, VE2FK, WB9HFK

Looking across all participants the average number of hours in which at least one QSO was made by a station was 8 and the median number of hours in which at least one QSO was made by a station was 7.

Section 6.6: Activity Levels –

Section 6.6.1: Station Activity - Here are some charts showing the level of activity from several different viewpoints. The first chart shows the number of active stations in each hour, for stations that submitted a log and had at least one contact during the hour. In the chart below the hour labeled 1 is hour beginning 1400z on the first (Saturday) session, the hour labeled 12 is hour beginning 0100z on the first session, and hour labeled 13 is the hour beginning 1400z on the second session (Sunday). The average number of stations active during the 18 hours of the party was 220. The average number of stations active during the first session was 228 and during the second session 204, so there was a definite reduction in station activity during the Sunday session, especially in the last three hours of Sunday where the average number of stations active in those hours was 190. The strongest station activity (264) was in the 7th hour of the Saturday session and the weakest hour (185) was the last hour of the Sunday session.

Texas QSO Party - 2021



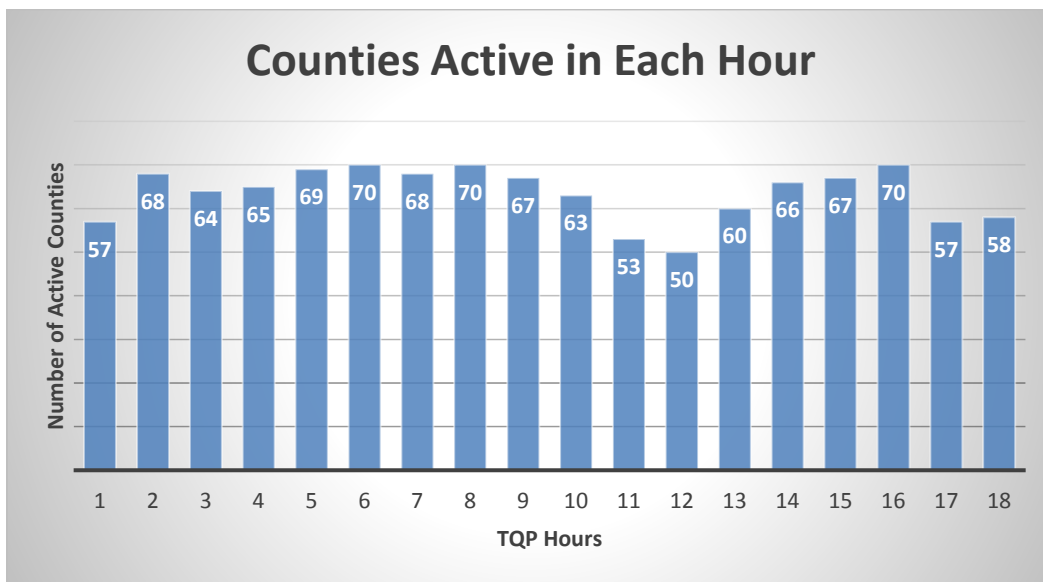
Section 6.6.2: County Activity – The twenty most active counties in terms of total number of QSOs are shown in this table wherein the geographical section is based on the ARRL section definitions.

County	Geo Area	Active Hours	CW Qsos	Phone Qsos	Total Qsos
Harris	STX	18	1928	279	2207
Gillespie	STX	18	1895	3	1898
Bastrop	STX	18	490	1327	1817
Travis	STX	18	1454	282	1736
Brazoria	STX	18	951	710	1661
Dallas	NTX	18	1226	127	1353
Collin	NTX	17	946	98	1044
Knox	WTX	18	51	945	996
Blanco	STX	14	815	0	815
Ector	WTX	18	658	156	814
Williamson	STX	18	766	0	766
Burnet	STX	18	736	0	736
Hays	STX	17	481	241	722
Galveston	STX	17	640	59	699
Denton	NTX	18	503	171	674
Brewster	WTX	18	655	0	655
Fort Bend	STX	18	576	63	639
Midland	WTX	18	528	63	591
McMullen	STX	12	75	385	460
McLennan	NTX	16	458	0	458

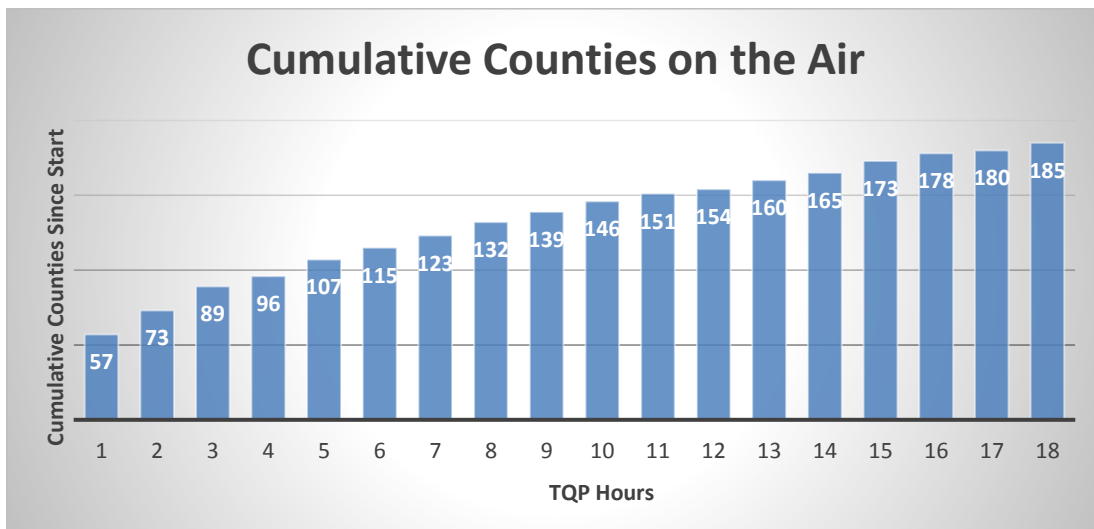
Texas QSO Party - 2021

The majority of the top 20 active counties were located in STX (12) followed by NTX and WTX each with 4 counties. It appears that the northern and western parts of the state could use some recruiting efforts. But there is also lots of opportunity for recruiting in the south – see the list below of inactive counties.

Overall County Activity – The following series of charts shows the activity from an overall QSO party “counties on the air” perspective. The first chart shows number of counties active in each hour and the second chart the cumulative number of different counties activated since the start of the party. The number of counties active gets off to a rather slow start but builds quickly during the day to a peak of 70 at hour 6 (hour beginning UTC 2000), holds steady through hour 8 (hour beginning UTC 2200) and then falls off significantly during the last four hours of Saturday, reaching a minimum of 50 during the last hour of the Saturday session. The average number of counties active on Saturday was approximately 64 whereas the average on Sunday was only slightly smaller at 63. Two hours on Saturday and one hour on Sunday reached the peak of 70 counties. The hour with the fewest counties (50) was the last hour of the Saturday session. The Sunday peak occurs at hour 16 (hour beginning UTC 1800) and then drops significantly in the last two hours of the Sunday session – the NFL effect?



While it is good to have an average of 63 counties on the air one would hope that, in order to keep the audience happy, new counties would be coming on the air during each hour of the party as indicated by a continuous increase in the cumulative counties activated since the start of the party. This growth is due primarily to the movement of the mobiles but also may be due somewhat to fixed stations that may have had to delay their start time.



The cumulative number of active counties shown above includes only the “SENT” counties from the submitted logs and does not include an additional 29 counties that were found as “RCVD” counties in the submitted logs. Here is a list of the missing SENT counties arranged geographically.

Sent Counties is a reliable estimate of the number of counties on the air since the originating station is in Texas and should know the county abbreviation to send. [Note: However, it has happened that a Texas station has sent the wrong county abbreviation. Many abbreviations are similar and at least one year a station passing through Montgomery county (MGMY) sent the very reasonable MONT which is the abbreviation for Montague.]

Received Counties is not as reliable as an estimate of the number of counties on the air since the receiving station may have busted the county that was sent so we have to look at how many logs recorded the received county and even if the number is significant we have to ask the question, especially in the case of a mobile, is it reasonable for a given station to be on from the county.

The list below shows the sixty-nine counties that were not found as the SENT county in any log. The list is arranged by geographical area using the ARRL definition of the three Texas sections (NTX, STX, WTX). It is interesting to note that only two counties were missed in North Texas while South Texas had 38 and West Texas 29. The almost complete coverage of NTX was due in large part to the efforts of mobiles W5CT/m, WB0TEV/m, and AD4EB/m in that area.

In the list those counties shown in bold type are ones that a detailed review indicates there is sufficient reason to declare that they were on the air but they did not show up as SENT counties because the active station(s) in the county did not submit a log. Accepting these twenty-one counties as being on the air brings the total activated counties to $185 + 21 = 206$. Which is still forty-eight below our goal of 254 but a lot of counties nonetheless.

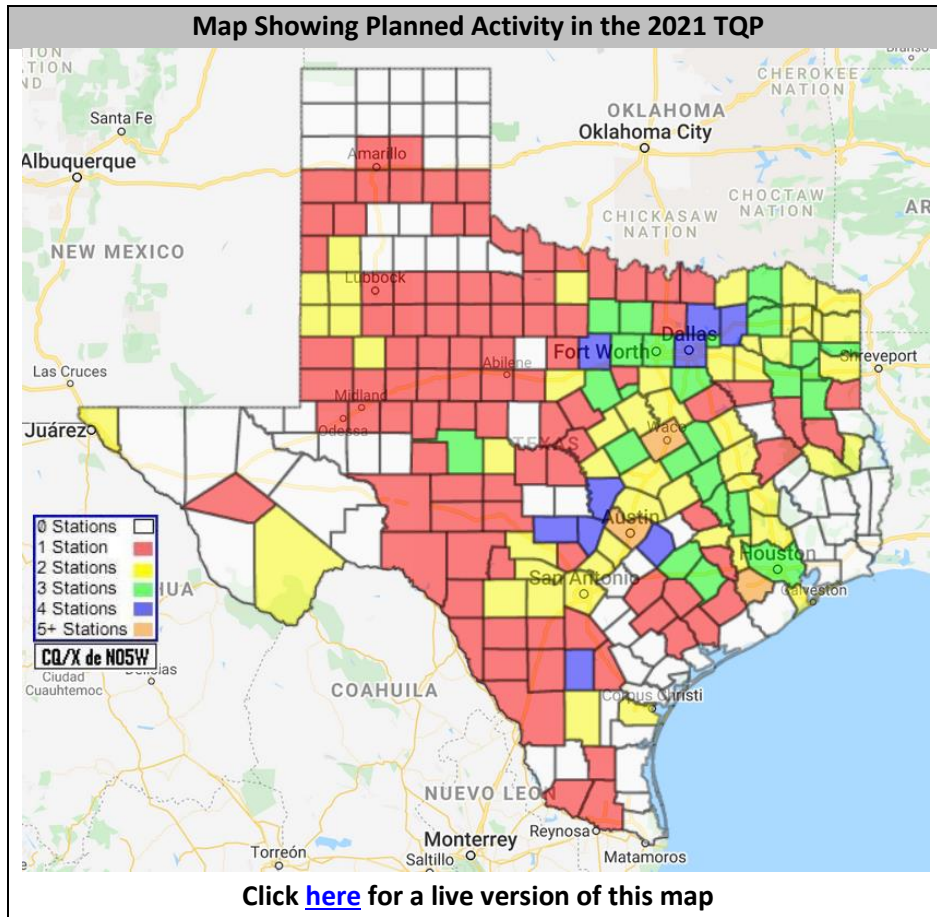
Texas QSO Party - 2021

County	Geo Area	County	Geo Area	County	Geo Area
Anderson	NTX	Newton	STX	Floyd	WTX
Cooke	NTX	Nueces	STX	Foard	WTX
Aransas	STX	Orange	STX	Hansford	WTX
Bee	STX	Polk	STX	Hartley	WTX
Cameron	STX	Real	STX	Hemphill	WTX
Chambers	STX	Refugio	STX	Hudspeth	WTX
Comal	STX	San Jacinto	STX	Hutchinson	WTX
Edwards	STX	San Patricio	STX	Lipscomb	WTX
Goliad	STX	Starr	STX	Loving	WTX
Hardin	STX	Trinity	STX	Moore	WTX
Hidalgo*	STX	Tyler	STX	Motley	WTX
Houston	STX	Walker	STX	Oldham	WTX
Jasper	STX	Washington	STX	Pecos	WTX
Jefferson	STX	Willacy	STX	Reagan	WTX
Jim Hogg	STX	Wilson	STX	Reeves	WTX
Karnes	STX	Zapata	STX	Roberts	WTX
Kenedy	STX	Zavala	STX	Shackelford	WTX
Kleberg	STX	Briscoe	WTX	Sherman	WTX
Lee	STX	Coleman	WTX	Terrell	WTX
Liberty	STX	Cottle	WTX	Upton	WTX
Llano	STX	Crane	WTX	Ward	WTX
Mason	STX	Culberson	WTX	Wheeler	WTX
Matagorda	STX	Dallam	WTX	Winkler	WTX

*Hidalgo has not been on the inactive list in a long time due in large part to the efforts of Bill Parry– W5VX who gave out many QSOs from Hidalgo over the years. Unfortunately, Bill became a silent key a few weeks prior to the 2021 TQP. RIP Bill.

Section 6.6.3: County Coverage and Coordination – While the above chart and map indicates where we fell short again from our yearly goal of activating all 254 counties activation of 206 counties still represents a significant achievement. With 254 counties to activate and with more than a few of those counties containing no active HF operators, mobile operation becomes an important part of the strategy for activating all the counties. And with a limited number of mobiles an important part of the strategy is coordinating (another term for pleading, begging, cajoling, and arm-twisting) to the extent possible, which mobiles will go where. For this we make use of Google Maps to publish known plans in the last month or so during the run-up to the party. Mobiles are requested to consult maps of the following type, accessible from the TQP website, when making their plans and to see if perhaps a small tweak in their planned route could help activate an additional county or two. As indicated on the legend, counties colored red is those that have only one station planning to operate from there and that the counties colored white have no announced plans for activation, and so forth.

Texas QSO Party - 2021



Comparing the planned activity to the inactive counties list we see that of the sixty-nine counties missed, only five of them had indicated beforehand that they would be on the air. From that viewpoint the Texas stations, as a group, met their announced commitments. While an indication beforehand is, of course not binding, and things happen to change plans especially where mobile operation is involved, it is important for the Texas stations to be careful in assessing their ability to cover the counties that they plan to activate. The counties that were planned to be active but were not are shown on this list. A goal of the TQP should be to keep this table small while at the same time increasing the number of counties on the air.

County	Geo Area
Cooke	NTX
Edwards	STX
Real	STX
Starr	STX
Zavala	STX
Counties Planned but not Activated	

Section 7: Log Submission Tips – Here are some tips to make the log submission go easier for the entrant as well as the log processor.

1. **Use a Contest Logging Program** – The work required to submit a log can be simplified considerably if you make use of a contest-oriented logging program such as N1MM+, WinTest, N3FJP, and others that can produce a Cabrillo-formatted log. **[Please do not send ADIF files]** A QSO line in the submitted log should contain the following information and only the following information:
 - Frequency in KHz (e.g. 14050)
 - Mode (CW, PH, or DG)
 - UTC Date (YYYY-MM-DD)
 - UTC Time
 - Sent Call (the call you sent)
 - Sent RST (the RST you sent)
 - Sent QTH (standard abbreviation for County/State/Province/DX Prefix that you sent)
 - Received Call (the call the other station sent)
 - Received RST (the signal report the other station sent)
 - Received QTH (standard abbreviation for the QTH sent by the other station)

So, a typical QSO line in the log of NO5W in Louisiana working AD4EB in Franklin county would be

QSO: 14050 CW 2021-09-18 1743 NO5W 599 LA AD4EB 599 FRAN

where the number of spaces between the fields is not important as long as there is at least one.

2. **Log the Correct Abbreviation** – Be sure to use the correct abbreviation when logging a Texas county, a US state, or a Canadian province. Possible errors here would be logging JACK when working someone in Jackson (JKSN) County, logging COMA when working someone in Comal (COML), logging MONT when working someone in Montgomery (MGMY). There is a JACK County whose abbreviation is JACK, COMA is the abbreviation for Comanche County, COML is the abbreviation for Comal County, MONT is the abbreviation for Montague County, and MGYM the abbreviation for Montgomery County.
3. **Send the Correct Abbreviation** – Be sure to use the correct abbreviation when sending your QTH. Prime examples of errors are sending MONT when you are in Montgomery (MGMY), and sending COMA when you are in Comal (COML), or just plain sending an abbreviation you thought would work. Please review the list of county abbreviations prior to the party.
4. **Review Your Log Prior to Submitting** – Be sure to check that your logging program has correctly recorded your sent information. A prime example here is Texas users of N1MM failing to note that the program logged the sent QTH as TX or TEXAS rather than the county that you actually sent. This usually does not result in loss of points since logs having this problem are returned to sender for correction. But it creates additional work for the log checkers – not a good thing.
5. **Use Primary Country Prefix for DX** – When you log a DX station be sure to log the correct QTH. DX stations should be logged with the primary prefix of the DX entity. For example, DX is not a valid QTH when working DL3DXX but DL is; similarly, if you work SP9LJD the correct QTH to log is SP.

Texas QSO Party - 2021

6. **Interface Your Logging Program to Your Radio** – Logging the correct band and mode on which the QSO took place is automatic if your logging program and your radio are communicating with each other. Otherwise you may change bands and forget to change the band in the logger and not get credit for a new QSO with the same station since it will be considered a dupe.
7. **Include Call and Category in Subject Line** -- When submitting your log be sure to include your call and your category in the subject line of the email. In case it is necessary to review the email submission of NO5XYZ during the log checking process it is a lot easier to find the email submitted by NO5XYZ than it is to find the email of Joe Ham who does not reveal that his call sign happens to be NO5XYZ. Including your category is particularly important for QRP operators and for fixed Texas stations since it is not possible to determine, just from the log entries, whether a station was QRP or LP or HP.
8. **Check Your Call in the Log** -- Finally be sure that your logging program has your call correct. That's right, your call. One operator who has an "oh" in his call (not NO5W!) typed a zero instead so his call in the log file name as well as in the log itself came out KA60YZ and it took a choir of log checkers a good half hour to figure out why that operators log was not showing up in the results – not a good thing.

Section 8: Conclusion

As we are wrapping up this report conditions are improving with 15m and 10m coming alive. This bodes well for all contests, including the Texas QSO Party. So next year be sure to check those bands in addition to the usual ones. If you enjoy the Texas QSO Party you should get out and do some recruiting on your own. If you know someone in one of those counties that had no activity in 2022 try to twist their arm to participate in TQP 2022. Talk it up at your club, and at any ham fest now that they appear to be opening up. With 254 counties to cover, the party can always use more mobiles and mobile operation can be a lot of fun as you motor around the state and as you cross into each new county working down the pileup. So, consider going mobile in the future, preferably with a driver/co-operator.

So that's the 2021 Texas QSO Party story. If necessary, you can help revise the story by reporting any errors that you find. Drop NO5W an email at my QRZ address and we will review the submitted logs and make any valid corrections.

Thanks to all who took the time to participate in the 2021 Texas QSO Party. We hope you had fun and will be able to participate again in 2022. Be sure to stay tuned for any possible changes for next year.

73/Chuck/NO5W

Section 9: Revision History

Rev 0.0: Original draft – February 15, 2022